

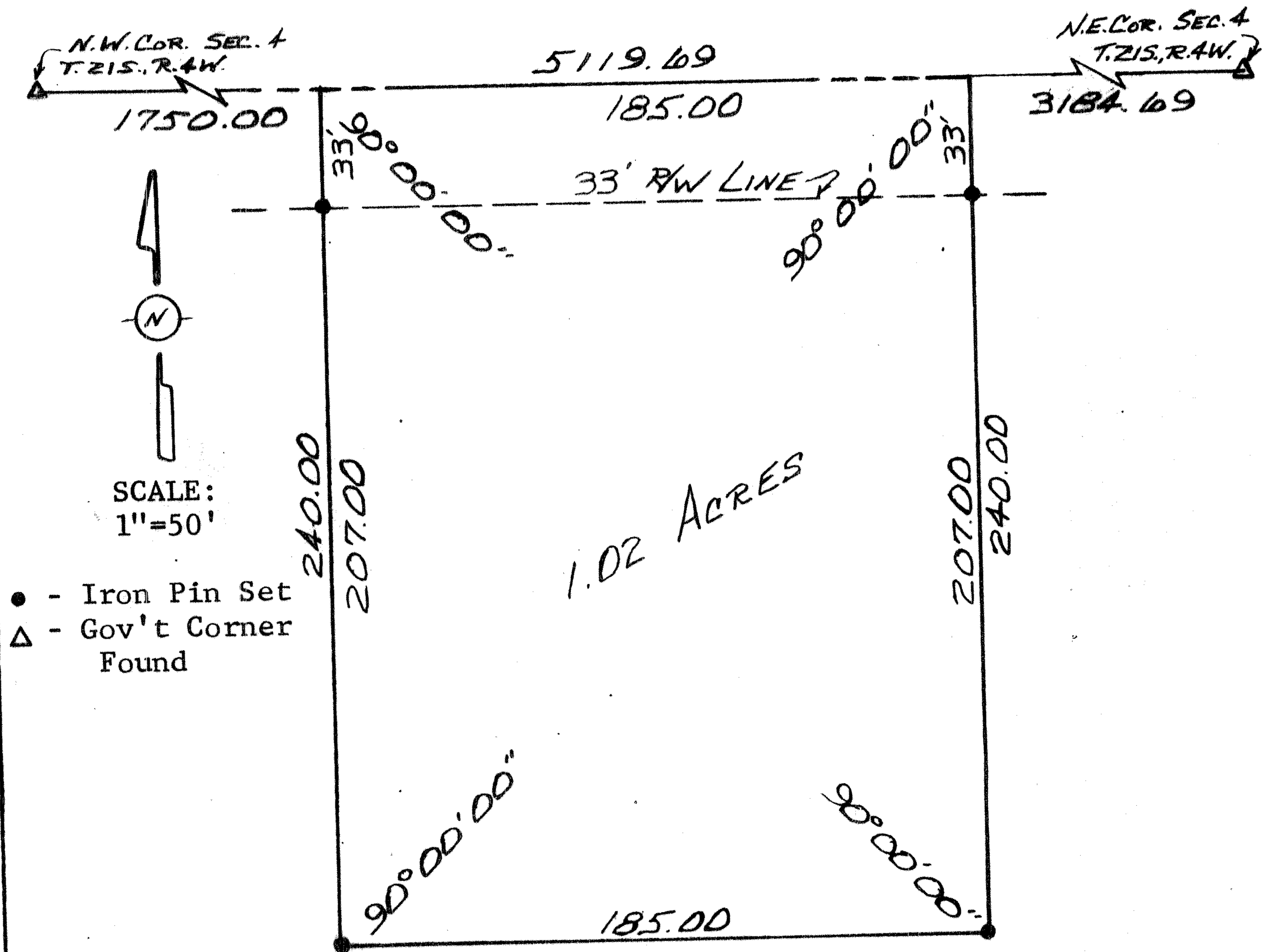
Survey for: Wes Koehn

By: Garber Surveying Service, P.A.

217 East First Ave., Suite 9

Hutchinson, Kansas 67501

DESCRIPTION: A tract in the N.½, N.W.¼ Section 4, T21S, R4W of the
6th P.M. as more particularly described on the attached sheet.



I hereby certify this plat to be a true, correct
and complete representation of the property described
above and on the attached sheet, as surveyed by me,
this 6th day of May 1981.

Daniel E. Garber
Daniel E. Garber, R.L.S.

