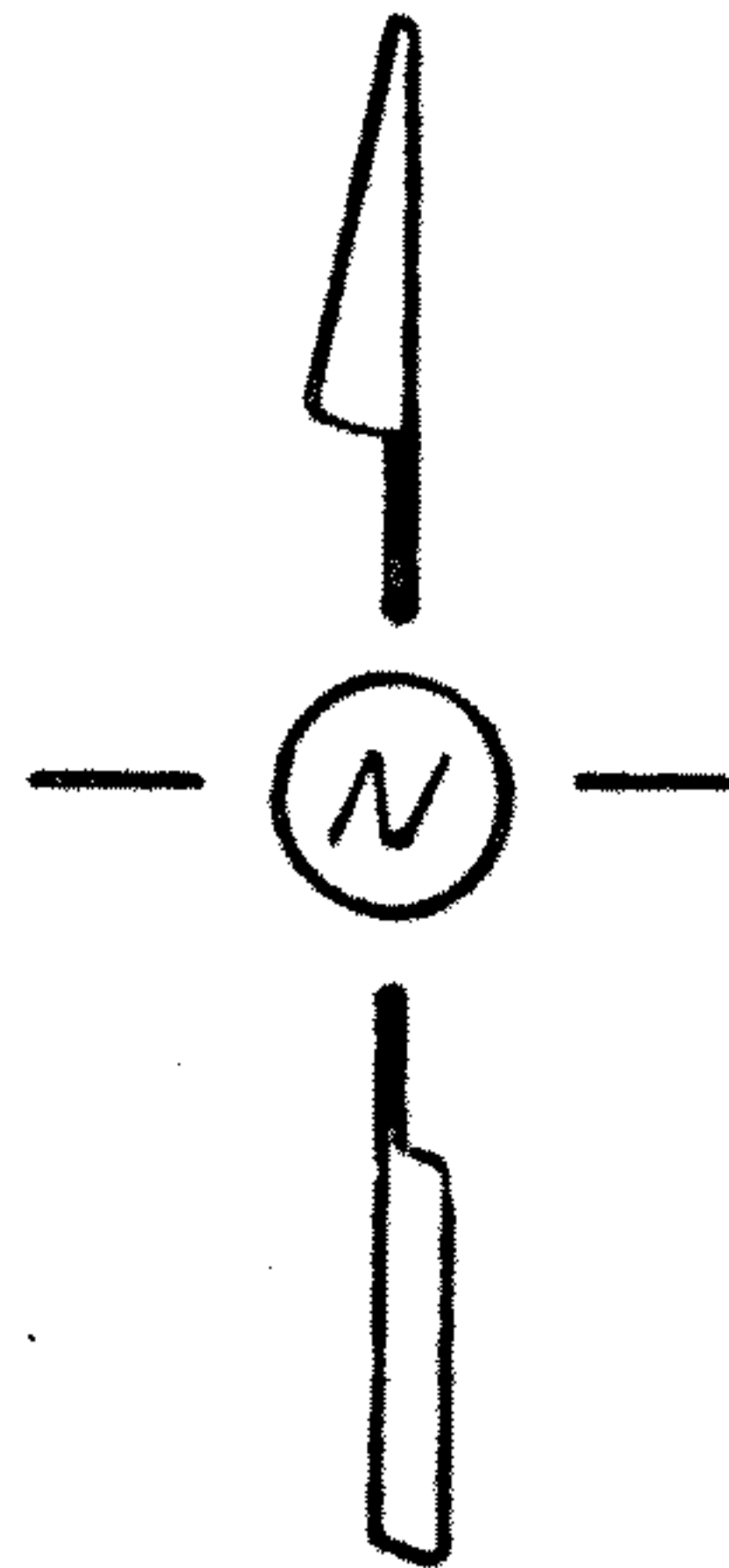
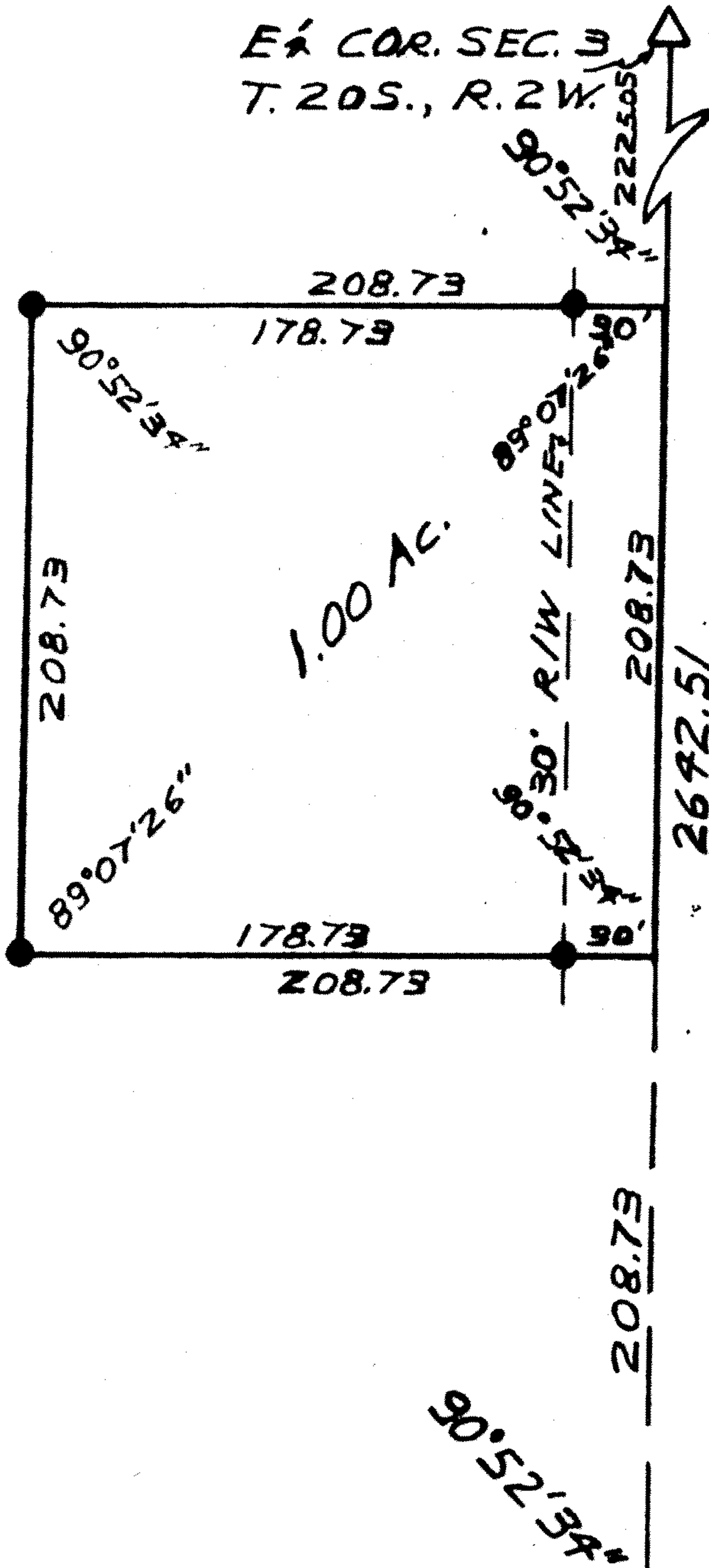


Survey for: Wade Mastre
By: Garber Surveying Service, P.A.
217 East First Avenue, Suite 9
Hutchinson, Kansas 67501

DESCRIPTION: A tract in the East half of the S.E. $\frac{1}{4}$ of Section 3,
T.20 S., R.2 W. of the 6th P.M. in McPherson County, Kansas
as more particularly described on the attached sheet.

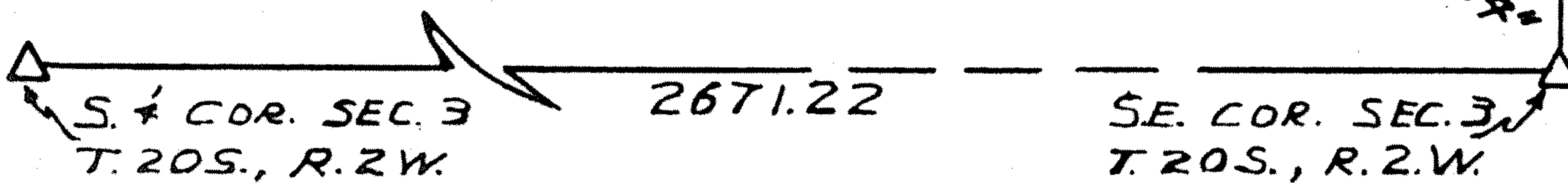


SCALE: 1"=100'



LEGEND

- △ - Section subdivision corner found
- - 5/8" x 24" iron pin set



I hereby certify this plat to be a true, correct
and complete representation of the property described
above and on the attached sheet, as surveyed by me,
this 26th day of October, 1981.

Daniel E. Garber RLS

