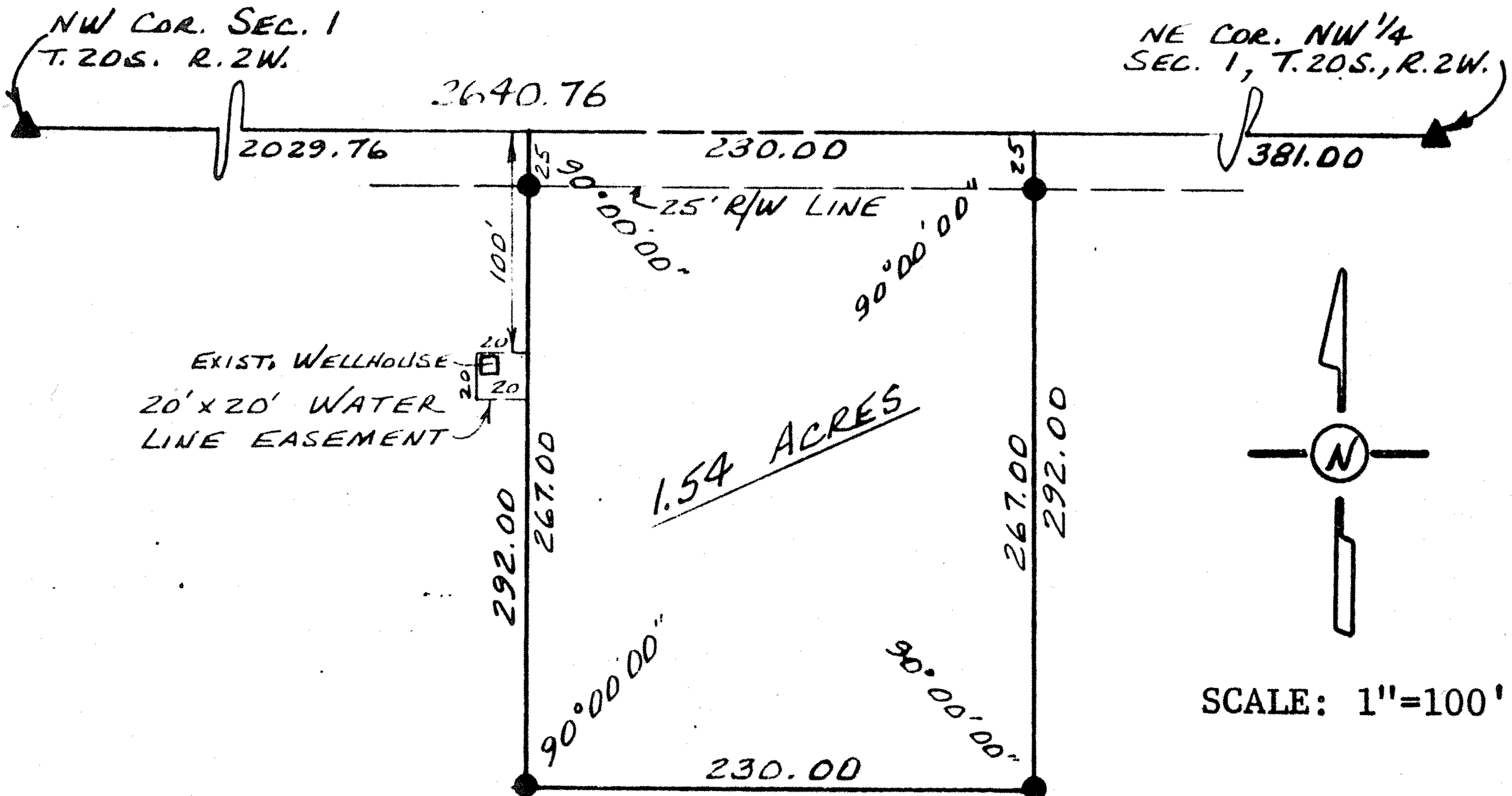


Survey for: Bud Anderson

By: Garber Surveying Service, P.A.  
217 East First Avenue, Suite 9  
Hutchinson, Kansas 67501

DESCRIPTION: A tract in the Northwest quarter (NW $\frac{1}{4}$ ) of Section 1,  
Township 20 South, Range 2 West of the Sixth Principal Meridian  
as more particularly described on the attached sheet.



Note: The NE and NW corners of the NW $\frac{1}{4}$  of Section 1, T20S, R2W of the 6th P.M. were reset by prorating the distances between the NE corner of said Section 1 and the NW corner of the NE $\frac{1}{4}$  of Section 3, T20S, R2W of the 6th P.M. Total distance measured was 13,203.79 ft.

- ▲ -Section subdivision corner set.
- -5/8" x 24" iron rebar set.

I hereby certify this plat to be a true, correct and complete representation of the property described above and on the attached sheet, as surveyed by me, this 21st day of July, 1982.

*Daniel E. Garber*  
Daniel E. Garber RLS



G82-84