



423 West 1st Ave.  
Hutchinson, Kansas 67501  
Phone 620 665-7032 • FAX 620 663-7401

# Garber Surveying Service, P.A.

129 E. Broadway, Suite 300  
Newton, Kansas 67114  
Phone 316 283-5053 • FAX 316 283-5073

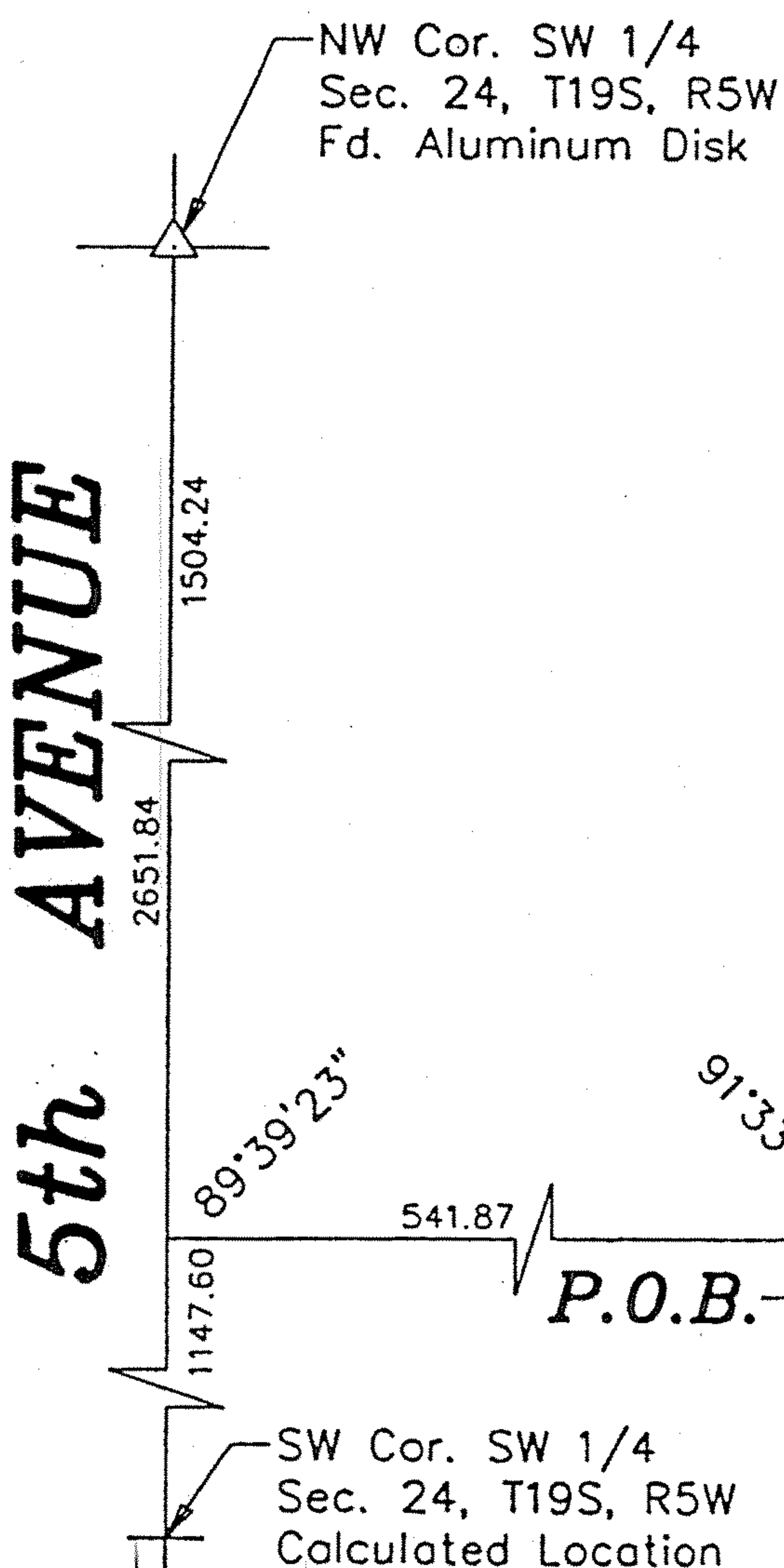
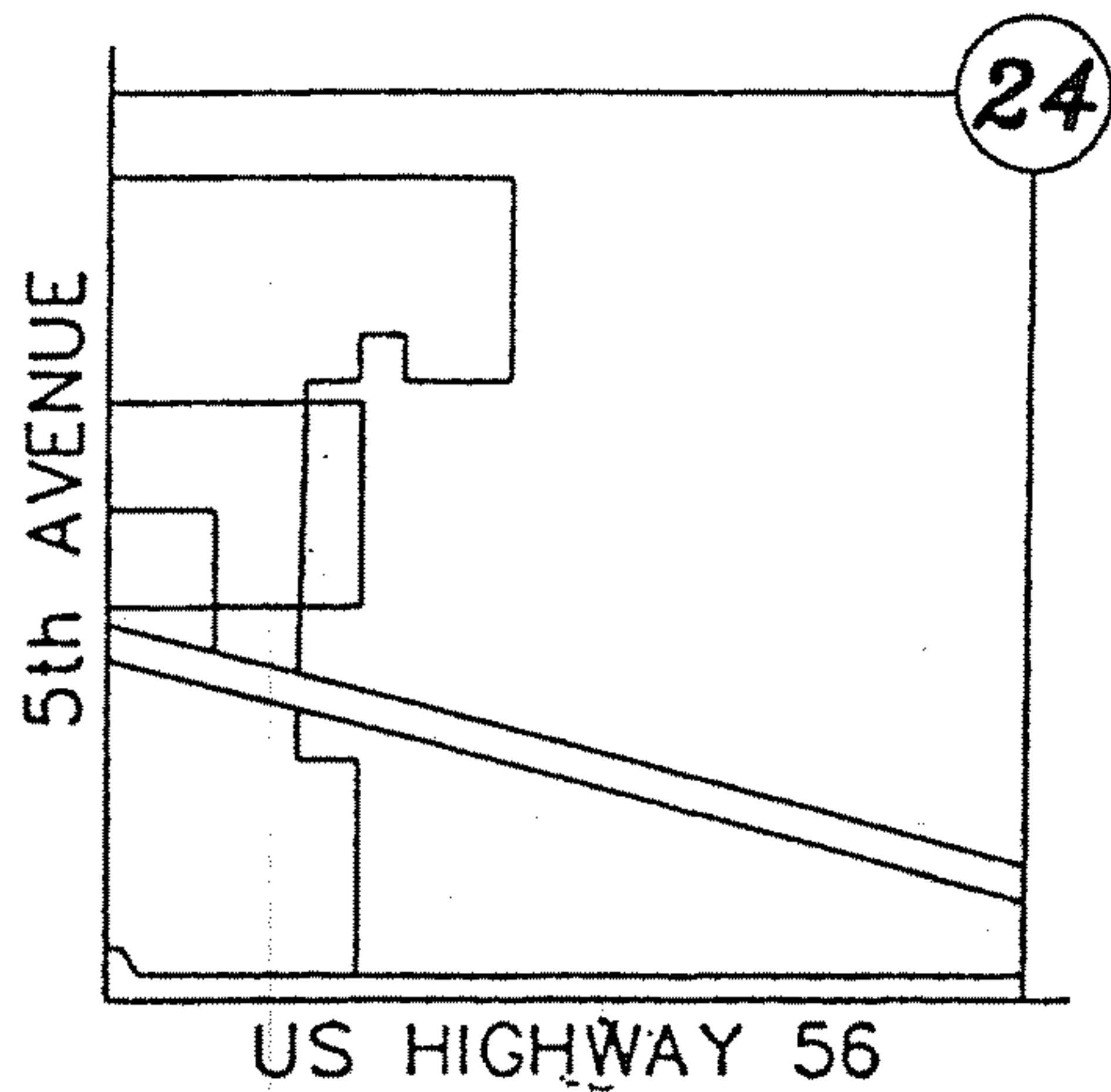
Project No. 2002-885

**SURVEY FOR:** ENTERPRISE, PRODUCTS

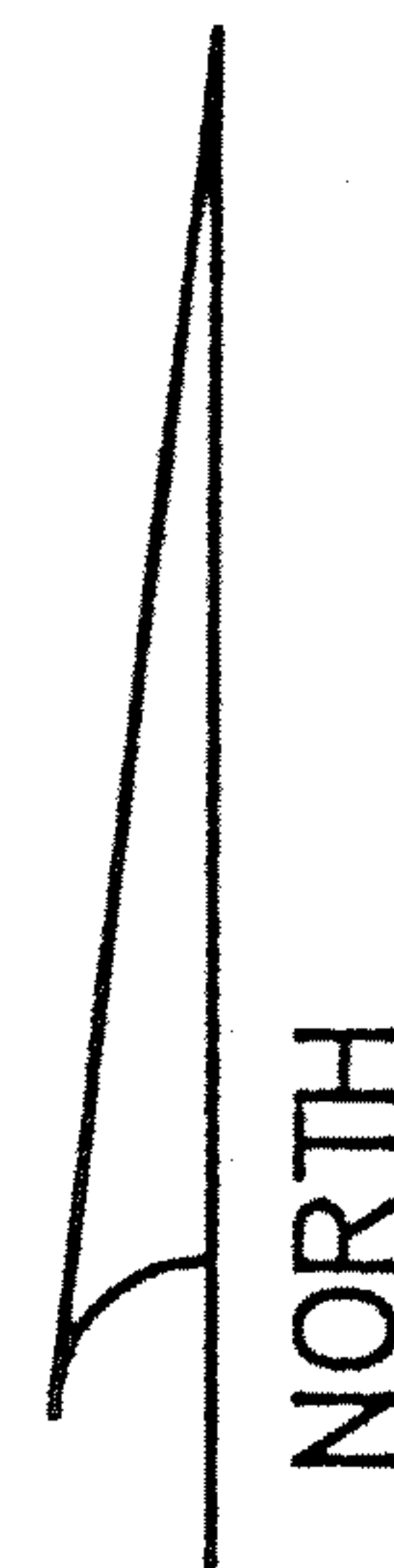
## DESCRIPTION:

A portion of the Southwest Quarter of Section 24, Township 19 South, Range 5 West of the 6th Principal Meridian, McPherson County, Kansas, described as follows:

Commencing at the Southwest corner of said Southwest Quarter; thence North along the West line of said Southwest Quarter 1147.60 feet; thence with a deflection angle 89°39'23" right-East 541.87 feet for the point of beginning; thence with a deflection angle 88°26'17" left-North 600.21 feet; thence with a deflection angle 88°26'17" right-East 154.37 feet; thence with a deflection angle 90°20'37" right-South 600.00 feet; thence with a deflection angle 89°39'23" right-West 167.13 feet to the point of beginning, containing 2.214 Acres, subject to any easements of record.



**PARCEL 6**



Scale: 1"=100'

## LEGEND

- △ - Sectional Monument Found
- P.O.B. - Point of Beginning

## SURVEYOR'S CERTIFICATE:

I hereby certify this plat to be a true, correct and complete representation of the property described above as surveyed under my supervision.  
Dated: January 24, 2003