

http://www.adultpdf.com
Created by TIFF To PDF trial version, to remove this mark, please register this software.

The CSS logo, consisting of the letters 'CSS' in a bold, stylized font, with a trademark symbol (TM) to its right.

register this software. **423 West 1st Ave.**
Hutchinson, Kansas 67501
Phone 620 665-7032 • FAX 620 663-7401

**129 E. Broadway, Suite 300
Newton, Kansas 67114
Phone 316 283-5053 • FAX 316 283-5073**

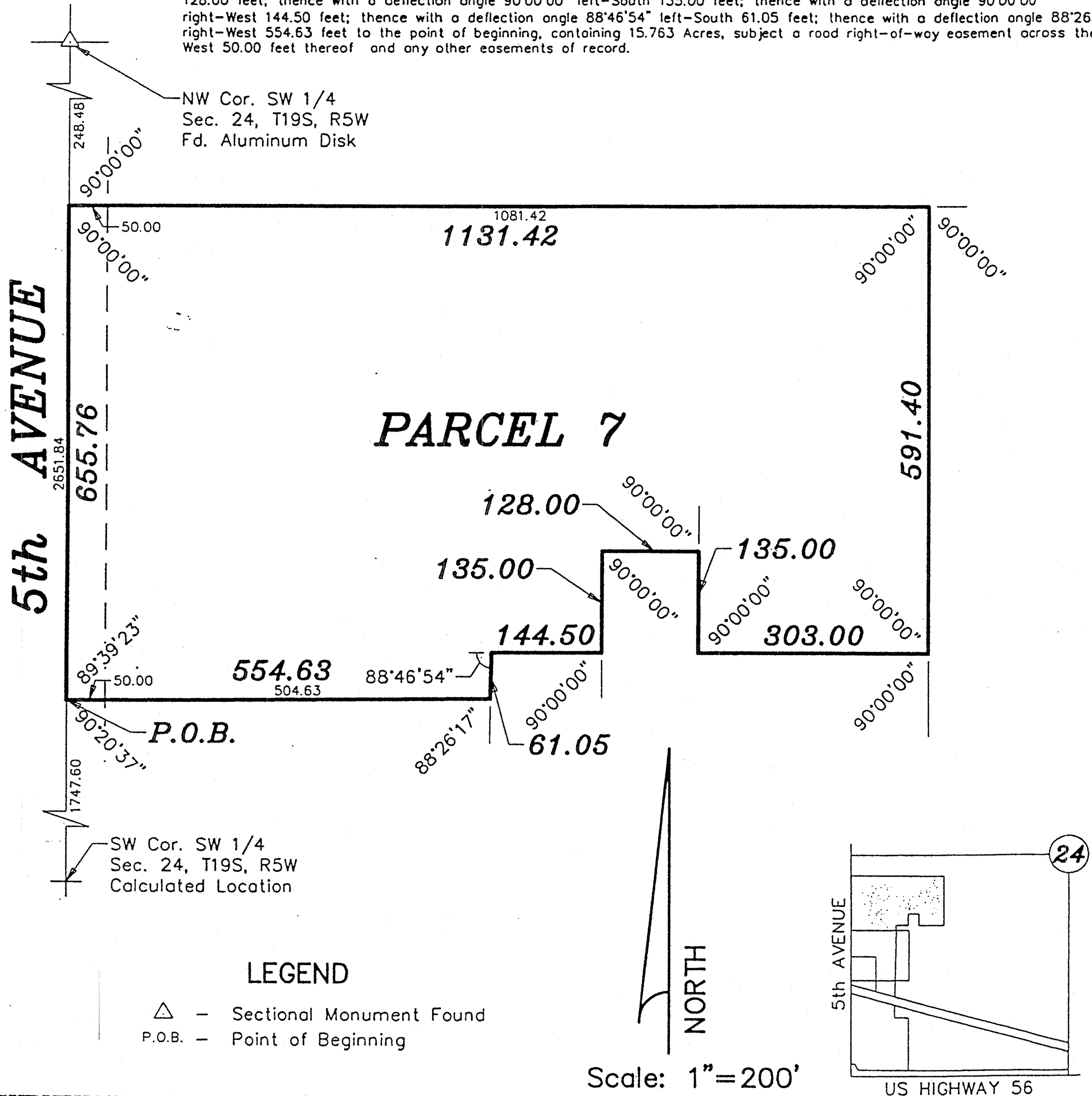
Project No. 2002-885

SURVEY FOR: ENTERPRISE PRODUCTS

DESCRIPTION:

A portion of the Southwest Quarter of Section 24, Township 19 South, Range 5 West of the 6th Principal Meridian, McPherson County, Kansas described as follows:

Commencing at the Southwest corner of said Southwest Quarter; thence North along the West line of said Southwest Quarter 1747.60 feet for the point of beginning; thence continuing North along the West line of said Southwest Quarter 655.76 feet; thence with a deflection angle 90°00'00" right-East 1131.42 feet; thence with a deflection angle 90°00'00" right-South parallel with the West line of said Southwest Quarter 591.40 feet; thence with a deflection angle 90°00'00" right-West 303.00 feet; thence with a deflection angle 90°00'00" right-North 135.00 feet; thence with a deflection angle 90°00'00" left-West 128.00 feet; thence with a deflection angle 90°00'00" left-South 135.00 feet; thence with a deflection angle 90°00'00" right-West 144.50 feet; thence with a deflection angle 88°46'54" left-South 61.05 feet; thence with a deflection angle 88°26'17" right-West 554.63 feet to the point of beginning, containing 15.763 Acres, subject a road right-of-way easement across the West 50.00 feet thereof and any other easements of record.



LEGEND

△ - Sectional Monument Found
P.O.B. - Point of Beginning

SURVEYOR'S CERTIFICATE:

I hereby certify this plat to be a true, correct and complete representation of the property described above as surveyed under my supervision.

Dated: January 24, 2003

Copyright ©2003 Garber Surveying Service, P.A.

Daniel E. Garber LS #683