



Garber Surveying Service, P.A.

423 West 1st Ave.
Hutchinson, Kansas 67501
Phone 620 665-7032 • FAX 620 663-7401

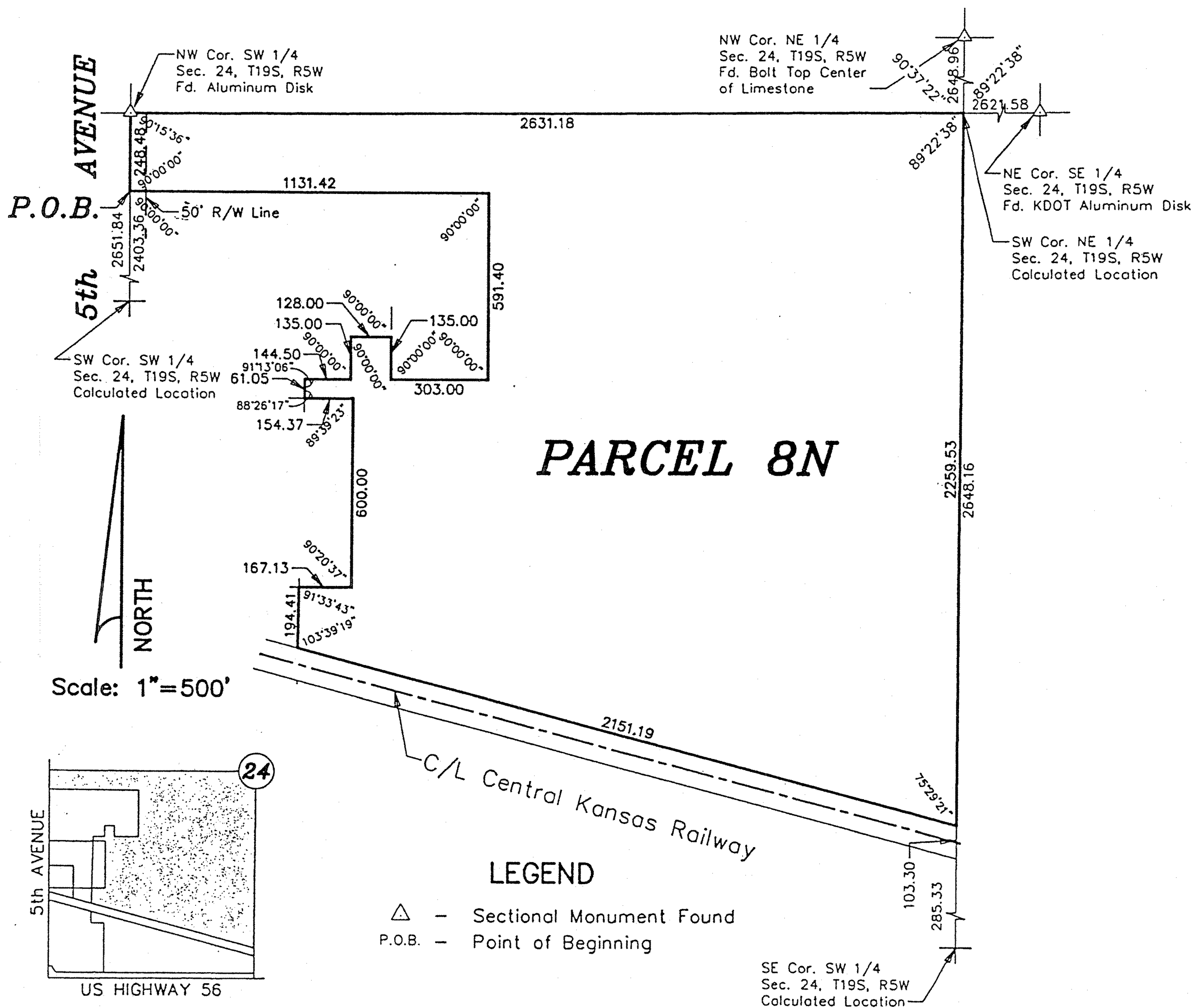
129 E. Broadway, Suite 300
Newton, Kansas 67114
Phone 316 283-5053 • FAX 316 283-5073

Project No. 2002-885

SURVEY FOR: ENTERPRISE PRODUCTS

DESCRIPTION: A portion of the Southwest Quarter of Section 24, Township 19 South, Range 5 West of the 6th Principal Meridian, McPherson County, Kansas described as follows:

Commencing at the Southwest corner of said Southwest Quarter; thence North along the West line of said Southwest Quarter 2403.36 feet for the point of beginning; thence continuing North along the West line of said Southwest Quarter 248.48 feet to the Northwest corner of said Southwest Quarter; thence with a deflection angle 89°44'24" right-East along the North line of said Southwest Quarter 2631.18 feet to the Northeast corner of said Southwest Quarter; thence with a deflection angle 90°37'22" right-South along the East line of said Southwest Quarter 2259.53 feet to the North right-of-way line of Central Kansas Railway; thence with a deflection angle 104°30'39" right-Northwest along said railroad right-of-way 2151.19 feet; thence with a deflection angle 76°20'41" right-North 194.41 feet; thence with a deflection angle 88°26'17" right-East 167.13 feet; thence with a deflection angle 89°39'23" left-North 600.00 feet; thence with a deflection angle 90°20'37" left-West 154.37 feet; thence with a deflection angle 91°33'43" right-North 61.05 feet; thence with a deflection angle 88°46'54" right-East 144.50 feet; thence with a deflection angle 90°00'00" left-North 135.00 feet; thence with a deflection angle 90°00'00" right-East 128.00 feet; thence with a deflection angle 90°00'00" right-South 135.00 feet; thence with a deflection angle 90°00'00" left-East 303.00 feet; thence with a deflection angle 90°00'00" left-North 591.40 feet; thence with a deflection angle 90°00'00" left-West 1131.42 feet to the point of beginning, containing 87.836 Acres, subject to a road right-of-way easement across the West 50.00 feet thereof and any other easements of record.



SURVEYOR'S CERTIFICATE:

I hereby certify this plat to be a true, correct and complete representation of the property described above as surveyed under my supervision.
Dated: January 24, 2003