

Main Office  
2908 North Plum Street  
Hutchinson, KS 67502  
Office: (620) 665-7032  
Fax: (620) 663-7401



# Garber Surveying Service, P.A.

Branch Offices  
511 North Poplar Street  
Newton, KS 67114  
Office: (316) 283 - 5053  
Fax: (316) 283 - 5073

115 East Marlin, Suite 102  
McPherson, KS. 67460  
Office: (620) 241-4441  
Fax: (620) 241-4458

SURVEY FOR: ADAM DOSCH

Project No. G2020-477

## DESCRIPTION:

A portion of the Northeast Quarter of Section 35, Township 21 South, Range 05 West of the 6th Principal Meridian in McPherson County, Kansas, more particularly described as follows:

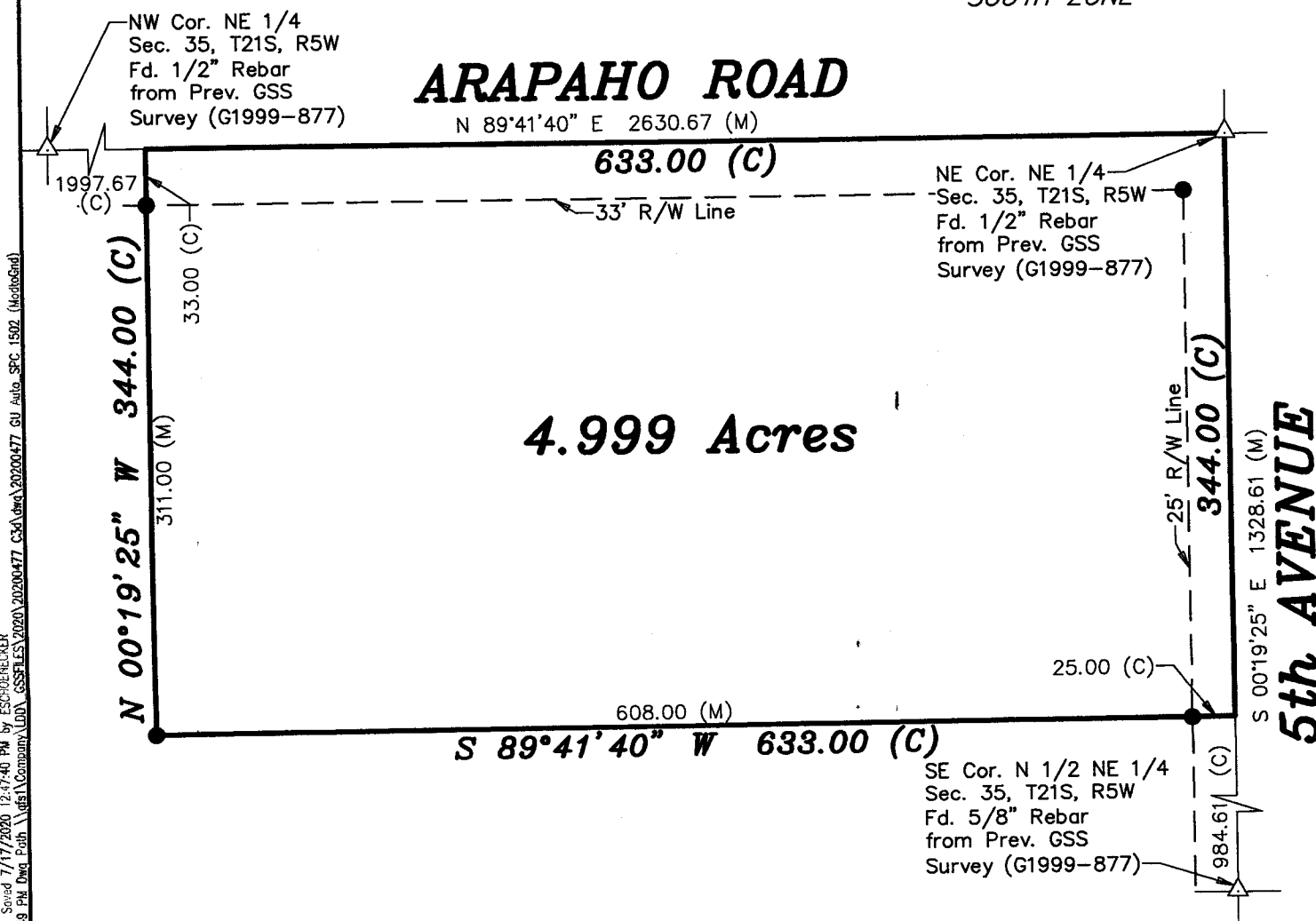
Beginning at the Northeast corner of the Northeast Quarter of Section 35, Township 21 South, Range 05 West of the 6th Principal Meridian; thence with a bearing South 00°19'25" East (basis of bearings is NAD 83 Kansas South Zone) along the East line of said Northeast Quarter 344.00 feet; thence South 89°41'40" West parallel with the North line of said Northeast Quarter 633.00 feet; thence North 00°19'25" West parallel with the East line of said Northeast Quarter 344.00 feet to the North line of said Northeast Quarter; thence North 89°41'40" East along the North line of said Northeast Quarter 633.00 feet to the point of beginning containing **4.999 Acres**, subject to road rights-of-way easements across the North 33.00 feet and the East 25.00 feet thereof and any other easements or restrictions of record.

## LEGEND

- △ - Sectional Monument Found
- - 5/8" x 24" Iron Rebar Set w/G.S.S. Cap
- (C) - Calculated
- (M) - Measured



Scale: 1" = 100'  
BASIS OF BEARING  
= NAD 83 KANSAS  
SOUTH ZONE



DATE OF FIELD WORK: July 10, 2020

## SURVEYOR'S CERTIFICATE:

I hereby certify this plat to be a true, correct and complete representation of the property described above as surveyed under my supervision.  
Dated: July 17, 2020

Copyright © 2020 Garber Surveying Service, P.A.

Daniel E. Garber, PS #683

