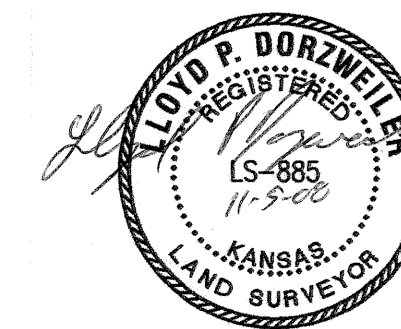
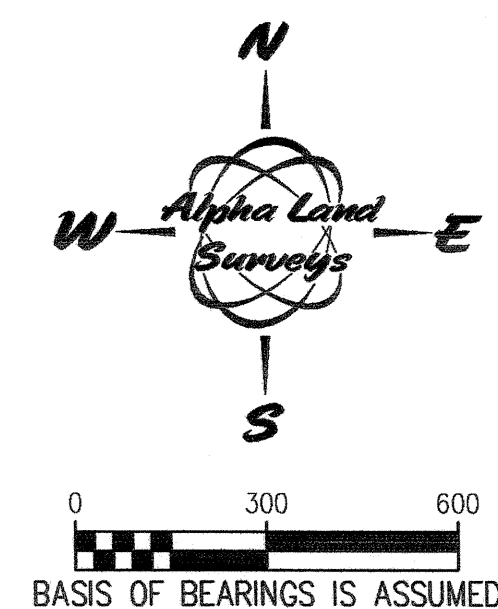


GENERAL NOTES:  
1) SECTION CORNER REFERENCE TIES FILED WITH THE KANSAS STATE HISTORICAL SOCIETY AND THE MCPHERSON COUNTY PUBLIC WORKS DEPARTMENT AS REQUIRED BY KSA 1987 SUPP. 58-2011.

SURVEYORS CERTIFICATE:  
I HEREBY CERTIFY THAT THIS SURVEY WAS MADE UNDER MY SUPERVISION ON NOVEMBER 3, 2008.



- ### LEGEND
- |        |  |
|--------|--|
| △      | - SECTION SUBDIVISION CORNER FOUND                               |
| ▲      | - SET 1/2"x24" REBAR WITH CAP STAMPED "ALPHA CLS-184"            |
| ○      | - FOUND 5/8" REBAR WITH CAP STAMPED "GABRER SURVEY"              |
| PS     | - PREVIOUS SURVEY BY GILSON ENTERPRISES SURVEYORS DATED 11/26/01 |
| GSS    | - PREVIOUS SURVEY BY GABRER SURVEYING SERVICE DATED 01/19/87     |
| R      | - RECORD MEASURE   |
| C      | - CALCULATED MEASURE   |
| M      | - MEASURED   |
| PRO    | - PRORATED   |
| P.O.B. | - POINT OF BEGINNING   |



**TRIPLE K AUCTION  
& REAL ESTATE**

**Alpha Land Surveys, Inc.**  
ONE EAST NINTH AVENUE  
HUTCHINSON, KANSAS 67501  
PH: (620) 728-0012 FAX: (620) 728-0413

DRAWN BY: RDB	SHEET 1 OF 1
CHECKED BY: LPD	PROJ NO: 080165B