

# DURR ENGINEERING,

ENGINEERING, SURVEYING, PLANNING, & DEVELOPMENT

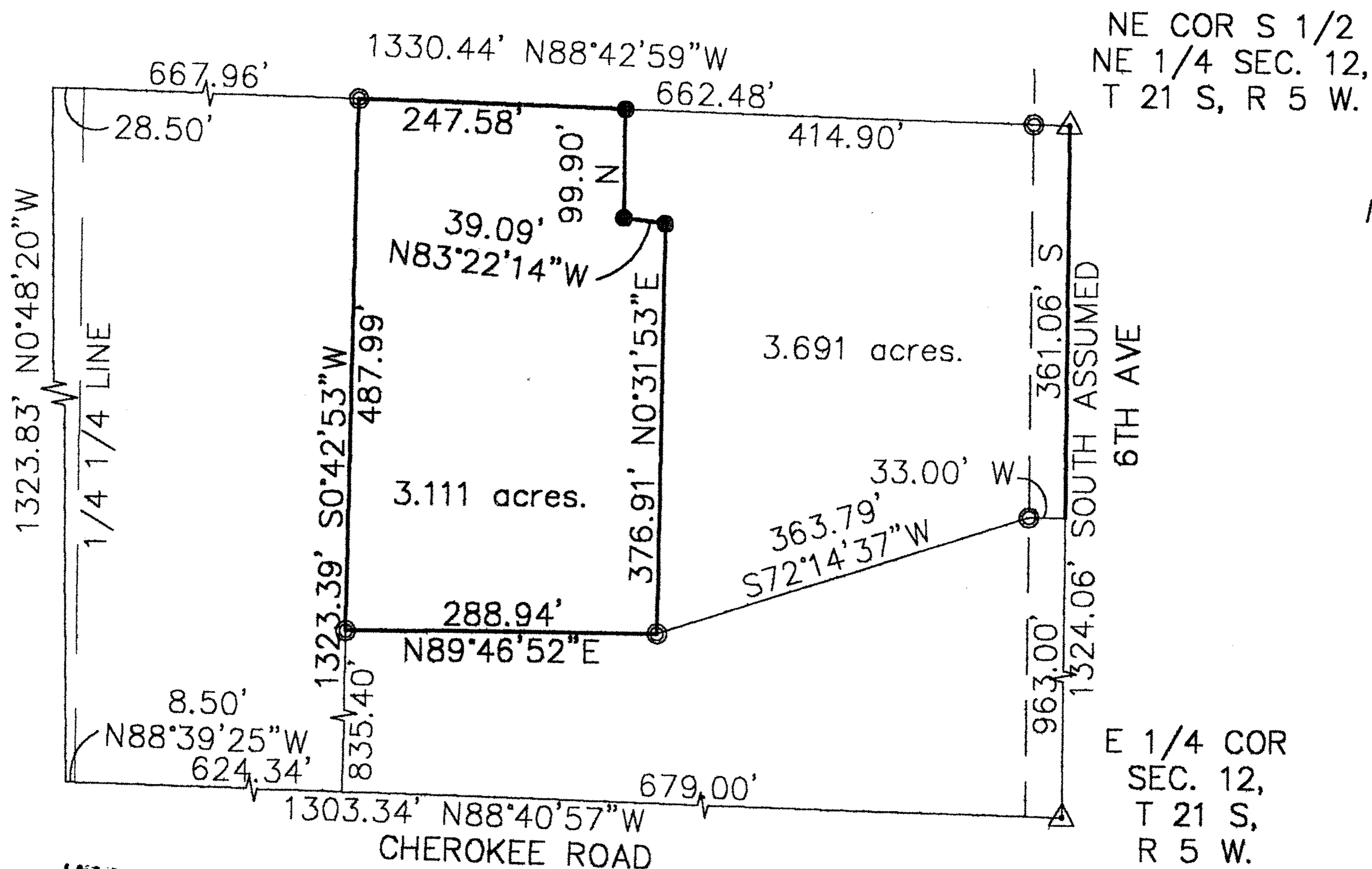
525 HOWARD STREET  
HUTCHINSON, KS 67501  
PHONE: 316-663-9613

## GRAPHIC SCALE

IN FEET



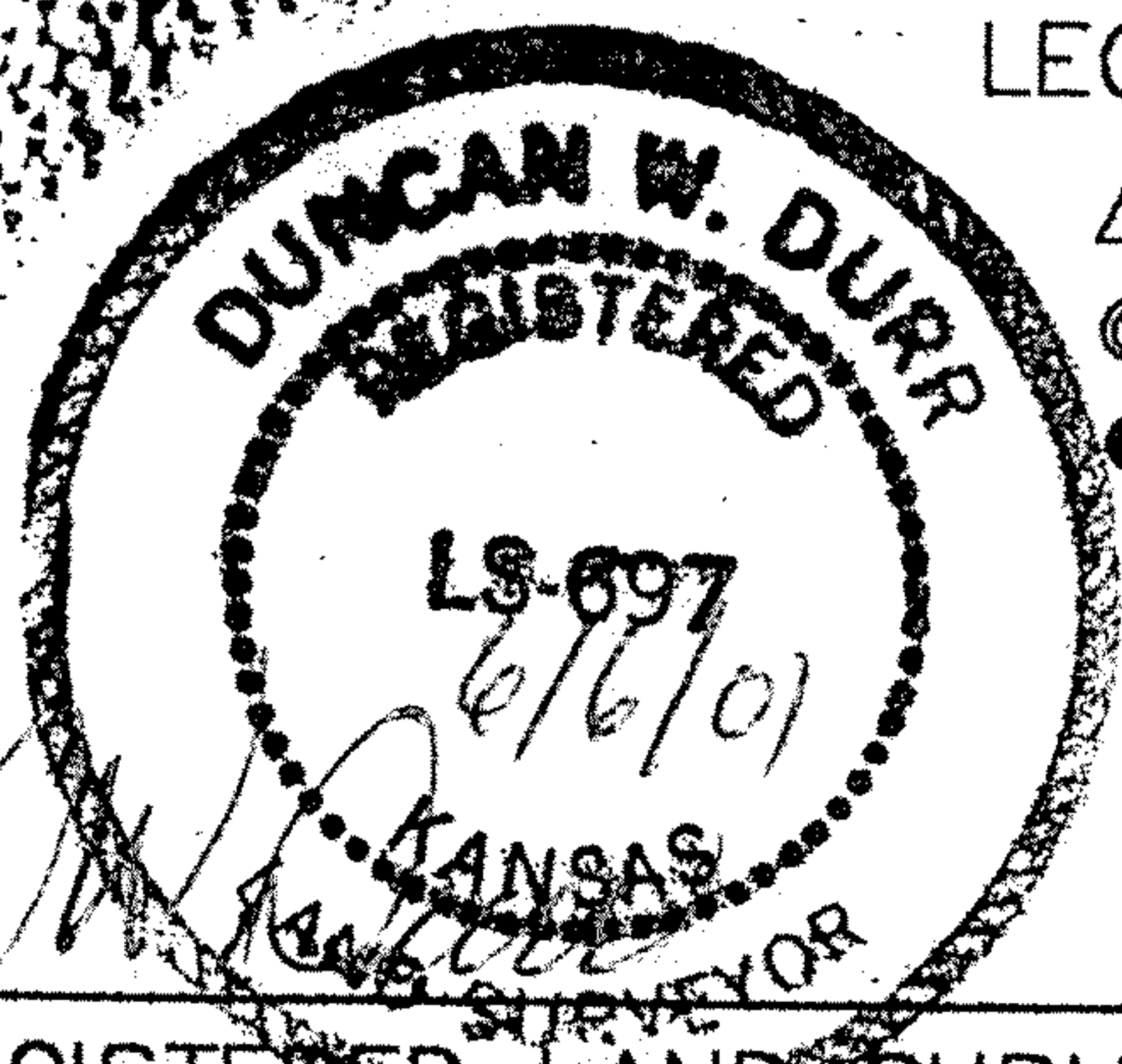
1" = 200'



### LEGEND

- △ SECTION CORNER FOUND
- PROPERTY CORNER FOUND
- PROPERTY CORNER SET

NOTE: SECTION CORNERS  
SHOWN FOR CLARITY.  
NOT USED.



REGISTERED LAND SURVEYOR

I, DUNCAN W. DURR, DO HEREBY CERTIFY THE  
HEREON SURVEY TO BE A TRUE AND ACCURATE  
REPRESENTATION OF THE CONDITIONS FOUND  
ON THE DATE HEREON WRITTEN.

CLIENT: MERLIN D. WIENS DRAWN: EL CADMEISTER PROJECT: 1062 SHEET: 1 OF: 1

A TRACT IN THE SOUTH HALF OF THE NORTHEAST QUARTER OF SECTION 12, TOWNSHIP 21 SOUTH, RANGE 5 WEST OF THE SIXTH PRINCIPAL MERIDIAN, MORE PARTICULARLY DESCRIBED AS FOLLOWS:

COMMENCING AT THE NORTHEAST CORNER OF THE SOUTH HALF OF SAID NORTHEAST QUARTER; THENCE WEST ALONG THE NORTH LINE OF SAID SOUTH HALF OF NORTHEAST QUARTER AT AN ASSUMED BEARING OF N88°42'59"W, A DISTANCE OF 414.90 FEET TO THE POINT OF BEGINNING; THENCE CONTINUING N88°42'59"W, A DISTANCE OF 247.58 FEET; THENCE S0°42'53"W, A DISTANCE OF 487.99 FEET; THENCE N89°46'52"E, A DISTANCE OF 288.94 FEET; THENCE N0°31'53"E, A DISTANCE OF 376.91 FEET; THENCE N83°22'14"W, A DISTANCE OF 39.09 FEET; THENCE NORTH, A DISTANCE OF 99.90 FEET TO THE POINT OF BEGINNING; TRACT CONTAINS 3.111 ACRES, EXCEPT ANY EASEMENTS OF RECORD; ALL IN McPHERSON COUNTY, KANSAS.

STATE: KANSAS COUNTY: McPHERSON SEC: 12 TWP: 21 S R: 5 W DATE: 6/6/2001