

NW CORNER NW 1/4  
SECTION 15, T21S, R3W  
FOUND 5/8" REBAR WITH  
ILLEGIBLE CAP 0.5 DEEP  
FROM TIES AT K.S.H.S.

NE CORNER NW 1/4  
SECTION 15, T21S, R3W

NE CORNER NE 1/4  
SECTION 15, T21S, R3W  
FOUND 5/8" REBAR WITH  
PLASTIC CAP STAMPED  
"CARBON SURVEYING" 0.4 DEEP  
FROM TIES AT K.S.H.S.

NW CORNER SW 1/4  
SECTION 15, T21S, R3W  
FOUND 5/8" REBAR 0.8 DEEP  
FROM TIES AT K.S.H.S.

NW CORNER E 1/2 E 1/2 SW 1/4  
NOT SET DUE TO CREEK

NE CORNER SW 1/4  
SECTION 15, T21S, R3W

SW CORNER SW 1/4  
SECTION 15, T21S, R3W  
FOUND 5/8" REBAR 0.8 DEEP  
FROM TIES AT K.S.H.S.

SW CORNER E 1/2 E 1/2 SW 1/4  
SECTION 15, T21S, R3W

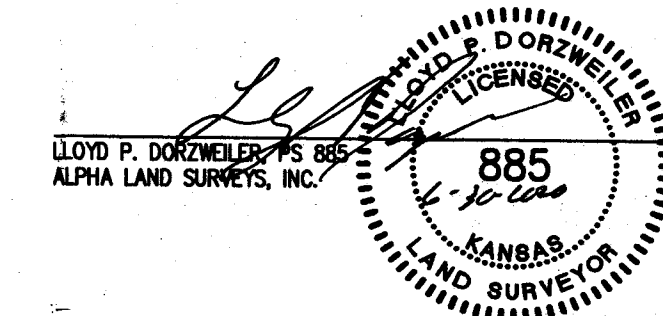
SW CORNER SW 1/4  
SECTION 15, T21S, R3W  
FOUND 5/8" REBAR 0.6 DEEP  
FROM TIES AT K.S.H.S.

SE CORNER SE 1/4  
SECTION 15, T21S, R3W  
FOUND 5/8" REBAR 0.5 DEEP  
FROM TIES AT K.S.H.S.

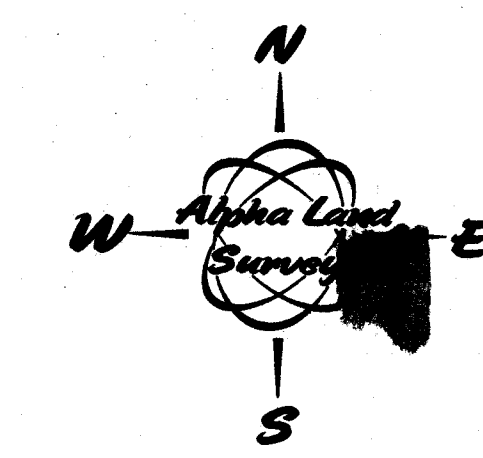
DESCRIPTION:  
A SURVEY TO ESTABLISH THE WEST PROPERTY LINE OF THE EAST HALF OF THE EAST HALF OF THE SOUTHWEST  
QUARTER OF SECTION 15, TOWNSHIP 21 SOUTH, RANGE 3 WEST OF THE 6TH PRINCIPAL MERIDIAN MOHPERSON  
COUNTY, KANSAS

GENERAL NOTES:  
1) SECTION CORNER REFERENCE TIES FILED WITH THE KANSAS STATE HISTORICAL SOCIETY AND THE MOHPERSON  
COUNTY PUBLIC WORKS DEPARTMENT AS REQUIRED BY KSA 1987 SUPP. 58-2011.  
2) NO TITLEWORK WAS PROVIDED BY CLIENT FOR SUBJECT PROPERTY. ALL EASEMENTS AND RIGHTS-OF-WAY  
AFFECTING SUBJECT PROPERTY MAY NOT BE SHOWN.

SURVEYORS CERTIFICATE:  
I HEREBY CERTIFY THAT THIS SURVEY WAS MADE UNDER MY SUPERVISION ON JUNE 3, 2020.



LEGEND  
○ - FOUND SURVEY MONUMENT  
△ - FOUND SECTION SUBDIVISION CORNER  
□ - FOUND "X" CUT IN CONCRETE  
● - SET 1/2"x24" REBAR WITH PLASTIC  
CAP STAMPED "ALPHA G.L.S.-184"  
✱ - SET "X" CUT IN CONCRETE  
⊠ - RIGHT-OF-WAY MARKER  
R - RECORD  
M - MEASURED  
C - CALCULATED MEASURE  
PRO - PRORATED  
POB - POINT OF BEGINNING  
K.S.H.S. - KANSAS STATE HISTORICAL SOCIETY



BASIS OF BEARINGS IS NAD83 GRID  
KANSAS SOUTH ZONE

SURVEY FOR <b>HAROLD ZERGER</b>	
SURVEY TYPE <b>BOUNDARY</b>	
<b>Alpha Land Surveys, Inc.</b> 102 EAST 4TH AVENUE HUTCHINSON, KANSAS 67501 PH: (620) 728-0012 FAX: (620) 728-0413	
SURVEY DATE: 06/03/2020	PLOT DATE: 06/08/2020
DRAWN BY: RB	PROJ. NO.: 200026
CHECKED BY: LPD	SHEET 1 OF 1