



Garber Surveying Service, P.A.

2908 North Plum St.  
Hutchinson, Kansas 67502  
Phone 620 665-7032 • FAX 620 663-7401

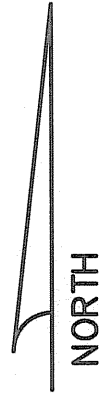
511 North Poplar St.  
Newton, Kansas 67114  
Phone 316 283-5053 • FAX 316 283-5073

115 East Marlin  
McPherson, Kansas 67460  
Phone 620 241-4441 • FAX 620 241-4458

Project No. G2012-622

SURVEY FOR: ADVANTAGE REAL ESTATE

**DESCRIPTION:** A portion of the South Half of the Southeast Quarter of Section 30, Township 21 South, Range 2 West of the 6th Principal Meridian, McPherson County, Kansas described as follows:  
Commencing at the Southeast Corner of the Southeast Quarter of Section 30, Township 21 South, Range 2 West of the 6th Principal Meridian; thence on a Kansas State Plane Grid Bearing South 89°19'15" West along the South line of said Southeast Quarter 787.00 feet to the point of beginning; thence continuing South 89°19'15" West along said South line 503.90 feet; thence North 00°40'45" West perpendicular to said South line 675.70 feet; thence North 85°51'39" East 187.24 feet; thence South 00°40'45" East perpendicular to said South line 336.00 feet; thence North 89°19'15" East parallel with said South line 317.00 feet; thence South 00°40'45" East perpendicular to said South line 351.00 feet to the point of beginning, containing 5.478 Acres, subject to a road right-of-way easement across the South 33.00 feet thereof, and any other easements or restrictions of record.

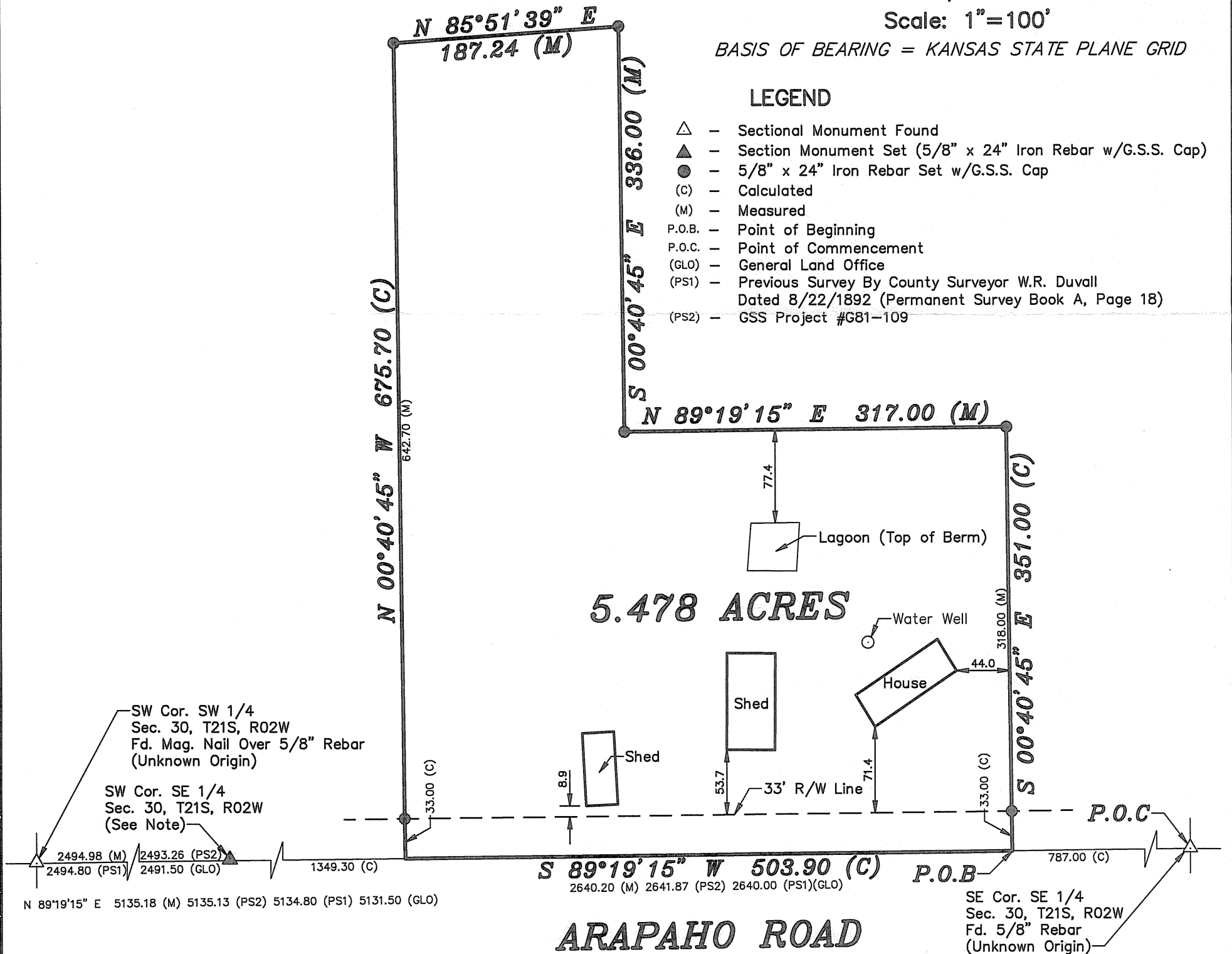


Scale: 1"=100'

BASIS OF BEARING = KANSAS STATE PLANE GRID

LEGEND

- △ - Section Monument Found
- ▲ - Section Monument Set (5/8" x 24" Iron Rebar w/G.S.S. Cap)
- - 5/8" x 24" Iron Rebar Set w/G.S.S. Cap
- (C) - Calculated
- (M) - Measured
- P.O.B. - Point of Beginning
- P.O.C. - Point of Commencement
- (GLO) - General Land Office
- (PS1) - Previous Survey By County Surveyor W.R. Duvall
- Dated 8/22/1892 (Permanent Survey Book A, Page 18)
- (PS2) - GSS Project #G81-109



**SURVEYOR'S NOTE:** Searched for stone monument set by Duvall in (PS1) but did not find. Considered monument to be lost as position falls in the bottom of a dry creek bed. Set new monument by single proportionate measurement as per (PS1) on line between SW and SE section corners. Set monument is 1.67' West of calculated location shown on (PS2).

DATE OF FIELD WORK: October 9, 2012

**SURVEYOR'S CERTIFICATE:**

I hereby certify this plat to be a true, correct and complete representation of the property described above as surveyed under my supervision.  
Dated: October 19, 2012

