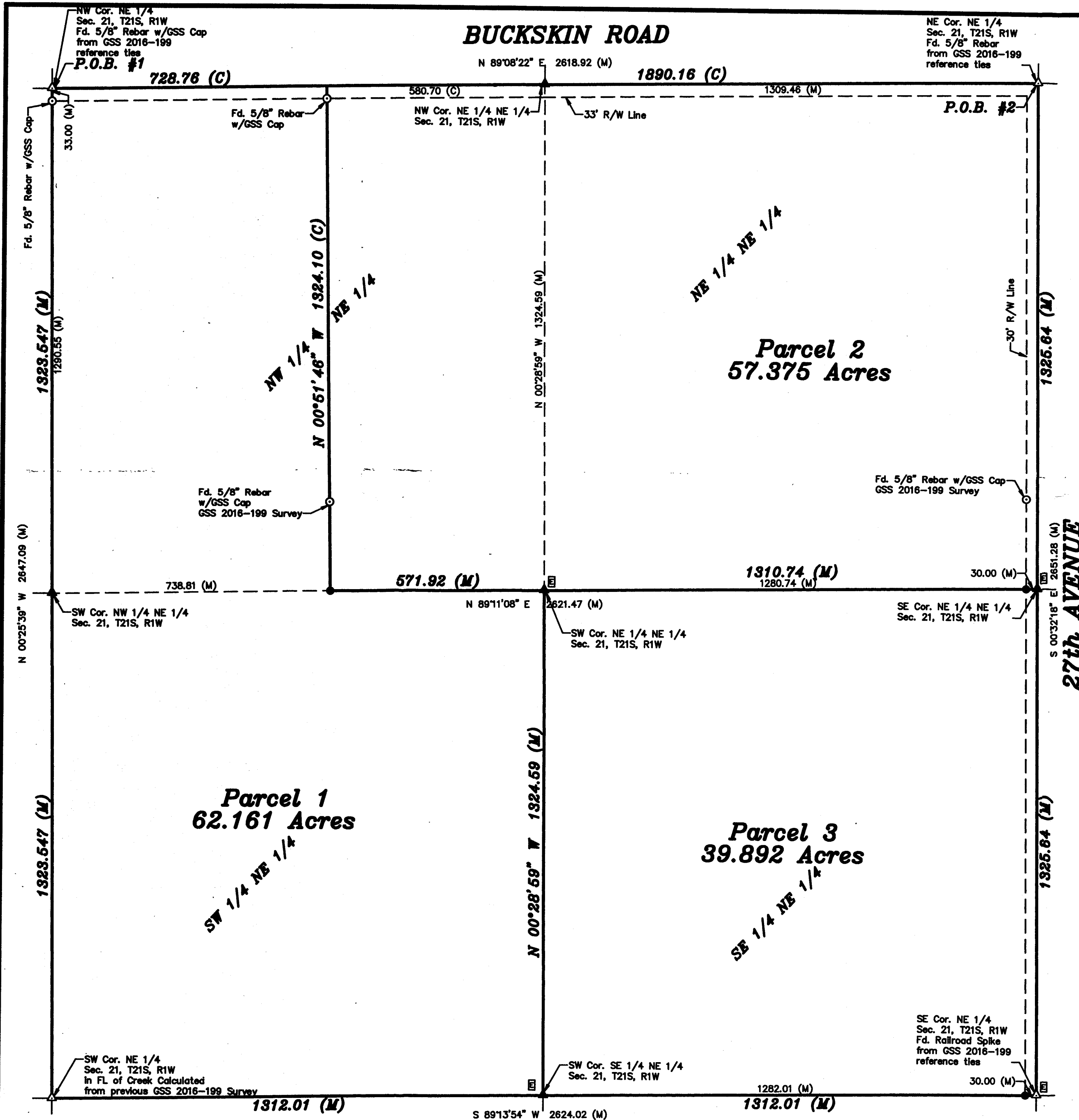
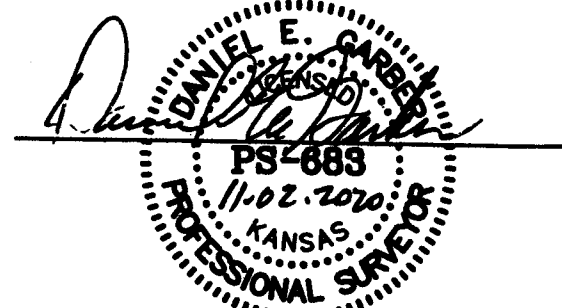


Copyright © 2020 Garber Surveying Service, P.A. Saved 11/2/2020 4:24:43 PM by KLYON
Plot Date & Time Thursday, November 5, 2020 9:01:13 AM Dwg Path \\gis1\Company\LDL_GSSFILES\2020\20200743 Auto_SPC 1502 (MedioGnd)
C:\d\dwg\20200743 Auto_SPC 1502 (MedioGnd)



SURVEYOR'S CERTIFICATE:

I hereby certify this plat to be a true, correct and complete representation of the property described hereon, as surveyed under my supervision, this 2nd day of November, 2020.



Prepared For: ALICE E. DYCK TRUST & JOHN M. DYCK TRUST		Description: A PORTION OF THE NE 1/4 SECTION 21, T21S, R1W McPHERSON COUNTY, KANSAS	
Prepared By: GSS		Garber Surveying Service, P.A.	
HUTCHINSON (Main Office) 2908 North Plum St. 67502 Ph. 620-665-7832 Fax 620-663-7401		McPHERSON (Branch Office) 206 South Main 67460 Ph. 620-241-4441 Fax 620-241-4458	
NEWTON (Branch Office) 511 North Poplar St. 67114 Ph. 316-283-5853 Fax 316-283-5873		MANHATTAN (Branch Office) 3226 Kimball Ave Ste.#2 66503 Ph. 785-320-4810	
Drawn By: KLL	Scale: 1"=200'	Date of Field Work: October 21, 2020	Job No:
Checked By: DEG	Date: 11/02/2020	Sheet 1 of 1 Sheet(s)	G2020-743