



# Garber Surveying Service, P.A.

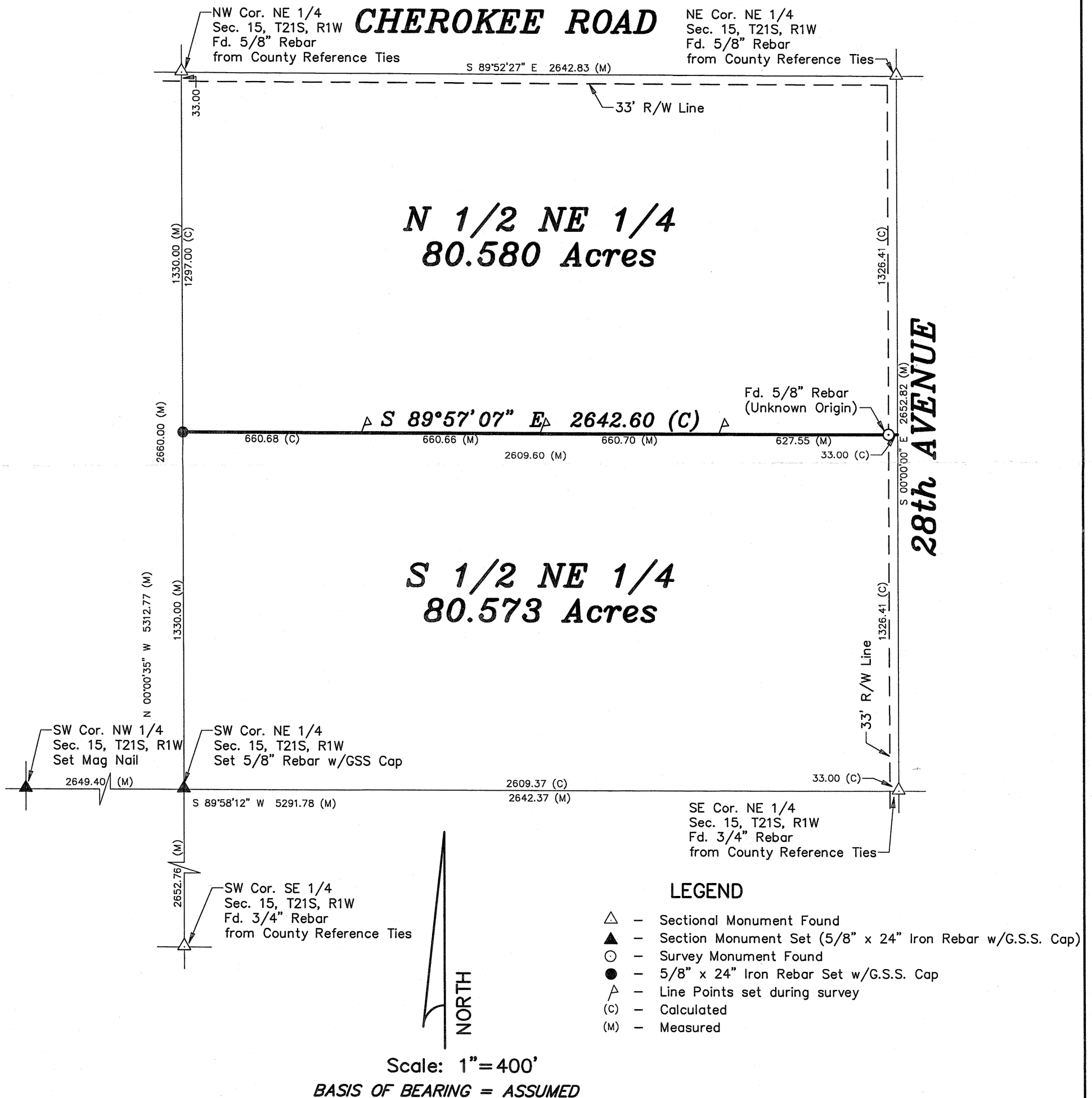
2908 North Plum St.  
Hutchinson, Kansas 67502  
Phone 620 665-7032 • FAX 620 663-7401

511 North Poplar Street  
Newton, Kansas 67114  
Phone 316 283-5053 • FAX 316 283-5073

Project No. G2010-610

**SURVEY FOR:** SHER KLASSEN NEUFELD

**DESCRIPTION:** The North Line of the South 1/2 of the Northeast 1/4, Section 15, Township 21 South, Range 1 West of the 6th P.M., McPherson County, Kansas.



Daniel E. Garber  
REGISTERED  
LAND SURVEYOR  
KANSAS  
LS #683  
11-10-2010