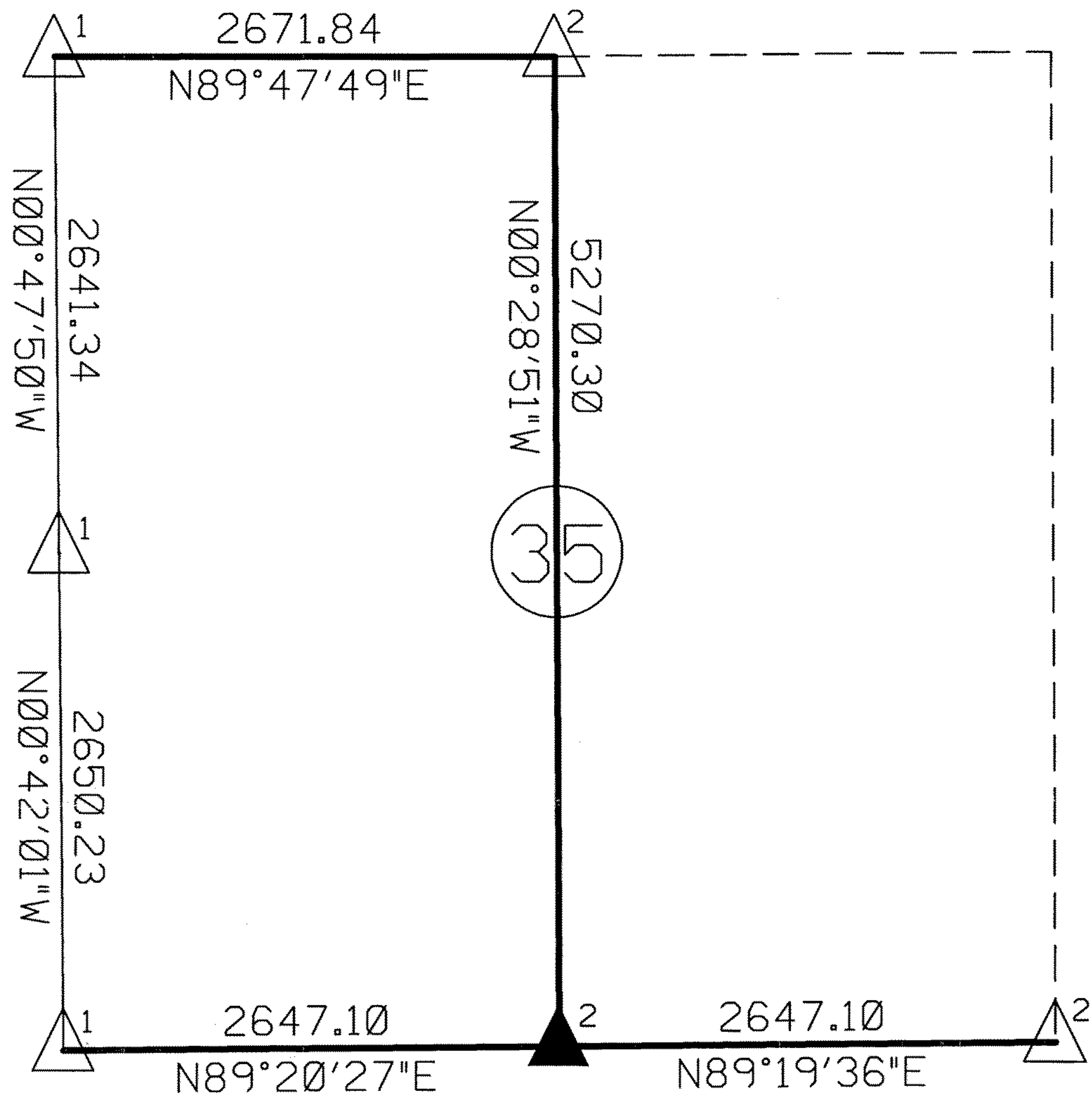


Project Coordinates on Section Corners  
Coords. x 0.99988685 = Kansas South State Plane Coordinates  
NAD 83 (1997 Adjustment)

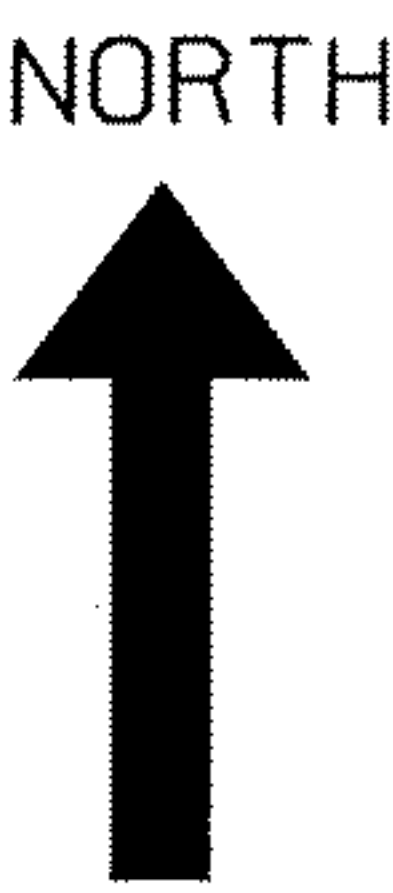
Pt.	Northing	Easting	Description
35400	1899143.845	1533129.708	N 1/4 Cor. Sec. 35, T 20 S, R 4 W
35700	1893904.838	1535820.866	SE Cor. Sec. 35, T 20 S, R 4 W
35800	1893873.729	1533173.947	S 1/4 Cor. Sec. 35, T 20 S, R 4 W



Twp. 20 S, Rng. 4 W

I hereby certify that this drawing is a true representation of a survey conducted by the Kansas Department of Transportation for project 61-59 K-8253-01, completed April 2005, in McPherson County, Kansas.

KANSAS DEPT. OF TRANSPORTATION



LEGEND

- No Scale
- Grid Bearings
- $\Delta^1$  = Corners used on KDOT Survey 61-59 K-8253-01 dated August 2004
- $\Delta^2$  = Found, See Filed Land Survey Reference Reports for Origin/Methods
- $\blacktriangle^2$  = Set 1/2" x 24" Rebar w/ KDOT Alum. Cap, See Filed Land Survey Reference Reports for Origin/Methods
- = Measured Values from this Survey
- = Measured Values from KDOT Survey 61-59 K-8253-01 dated August 2004

by *Larry Dee Moore*  
LS-1174  
4-18-05  
KANSAS  
LAND SURVEYOR

If the surveyor's signature is not blue colored, the drawing is a copy that should be assumed to contain unauthorized alterations. The certification contained on this document shall not apply to any copies.