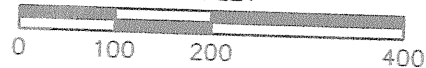


DURR ENGINEERING, LLC

SURVEYING, PLANNING, & DEVELOPMENT
525 HOWARD STREET
HUTCHINSON, KS 67501
PHONE: 620-663-9613

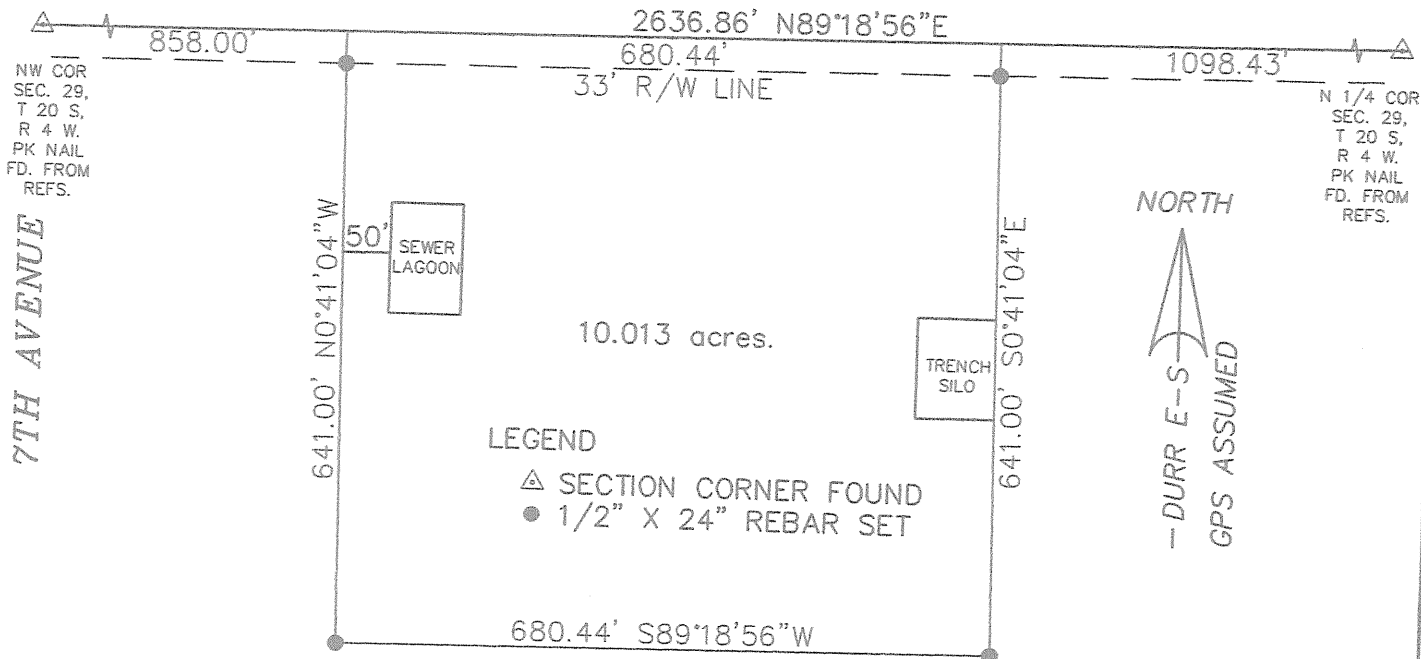
GRAPHIC SCALE

IN FEET



1" = 200'

COMMANCHE RD



LEGEND

- △ SECTION CORNER FOUND
- 1/2" X 24" REBAR SET

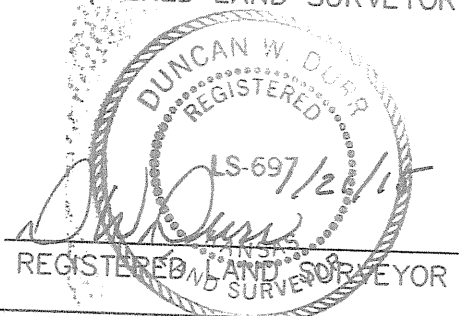
REVIEW SURVEYOR'S CERTIFICATE
STATE OF KANSAS

COUNTY OF McPHERSON } SS

REVIEWED IN ACCORDANCE WITH THE
REQUIREMENTS OF K.S.A. 58-2004,

2015.

REGISTERED LAND SURVEYOR



NOTES:

- 1) NO TITLE WORK PROVIDED TO SURVEYOR PRIOR TO SURVEY
- 2) SECTION CORNER TIES TO BE SENT TO COUNTY ENGINEER'S OFFICE AND KANSAS STATE HISTORICAL SOCIETY

I, DUNCAN W. DURR, DO HEREBY CERTIFY THE
HEREON SURVEY TO BE A TRUE AND ACCURATE
REPRESENTATION OF THE CONDITIONS FOUND
ON THE DATE HEREON WRITTEN.

CLIENT: PENNER

DRAWN: DURR

PROJECT: 15003

SHEET: 1 OF: 1

A TRACT IN THE NORTHWEST QUARTER OF SECTION 29, TOWNSHIP 20 SOUTH, RANGE 4 WEST OF THE SIXTH PRINCIPAL MERIDIAN, MORE PARTICULARLY DESCRIBED AS FOLLOWS: COMMENCING AT THE NORTHWEST CORNER OF SAID NORTHWEST QUARTER; THENCE N89°18'56"E, ALONG SECTION LINE, A DISTANCE OF 858.00 FEET; THENCE CONTINUING N89°18'56"E, A DISTANCE OF 680.44 FEET; THENCE S0°41'04"E, A DISTANCE OF 641.00 FEET; THENCE S89°18'56"W, A DISTANCE OF 680.44 FEET; THENCE N0°41'04"W, A DISTANCE OF 641.00 FEET TO THE POINT OF BEGINNING; TRACT CONTAINS 10.013 ACRES, SUBJECT TO ALL IN McPHERSON COUNTY, KANSAS.

STATE: KANSAS

COUNTY: McPHERSON

SEC: 29

TWP: 20 S

R: 4 W

DATE: 1/21/2015