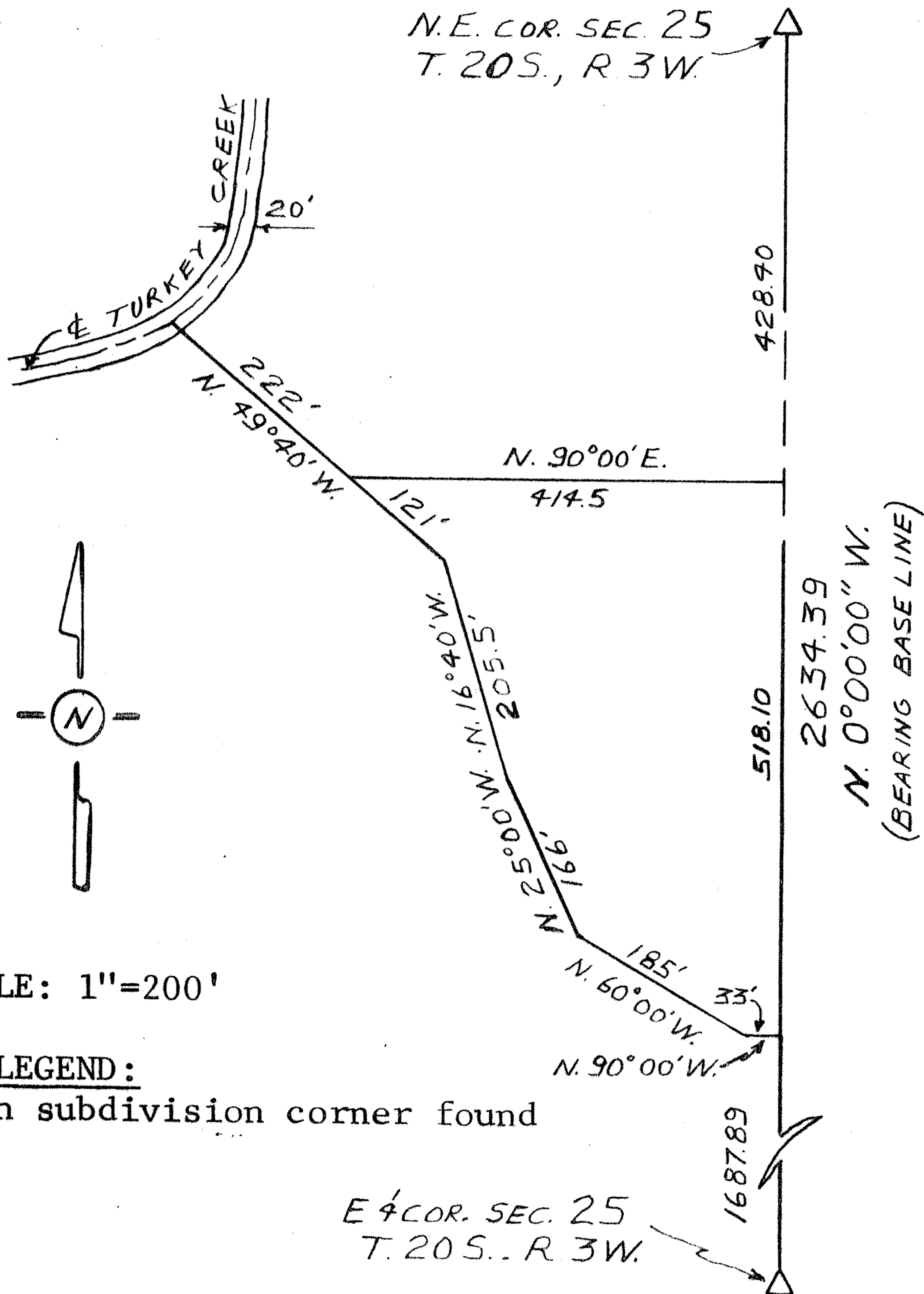


Survey for: Sheets-Adams Realtors
By: Garber Surveying Service, P.A.
217 East First Avenue, Suite 9
Hutchinson, Kansas 67501

DESCRIPTION: Survey to establish the length and bearing of a line
in the Northeast quarter ($NE\frac{1}{4}$) of Section 25, T.20 S., R.3 W.
of the 6th P.M. in McPherson County, Kansas.



I hereby certify this plat to be a true, correct
and complete representation of the data described above
as surveyed by me, this 26th day of February, 1982.

Daniel E. Garber
Daniel E. Garber RLS

