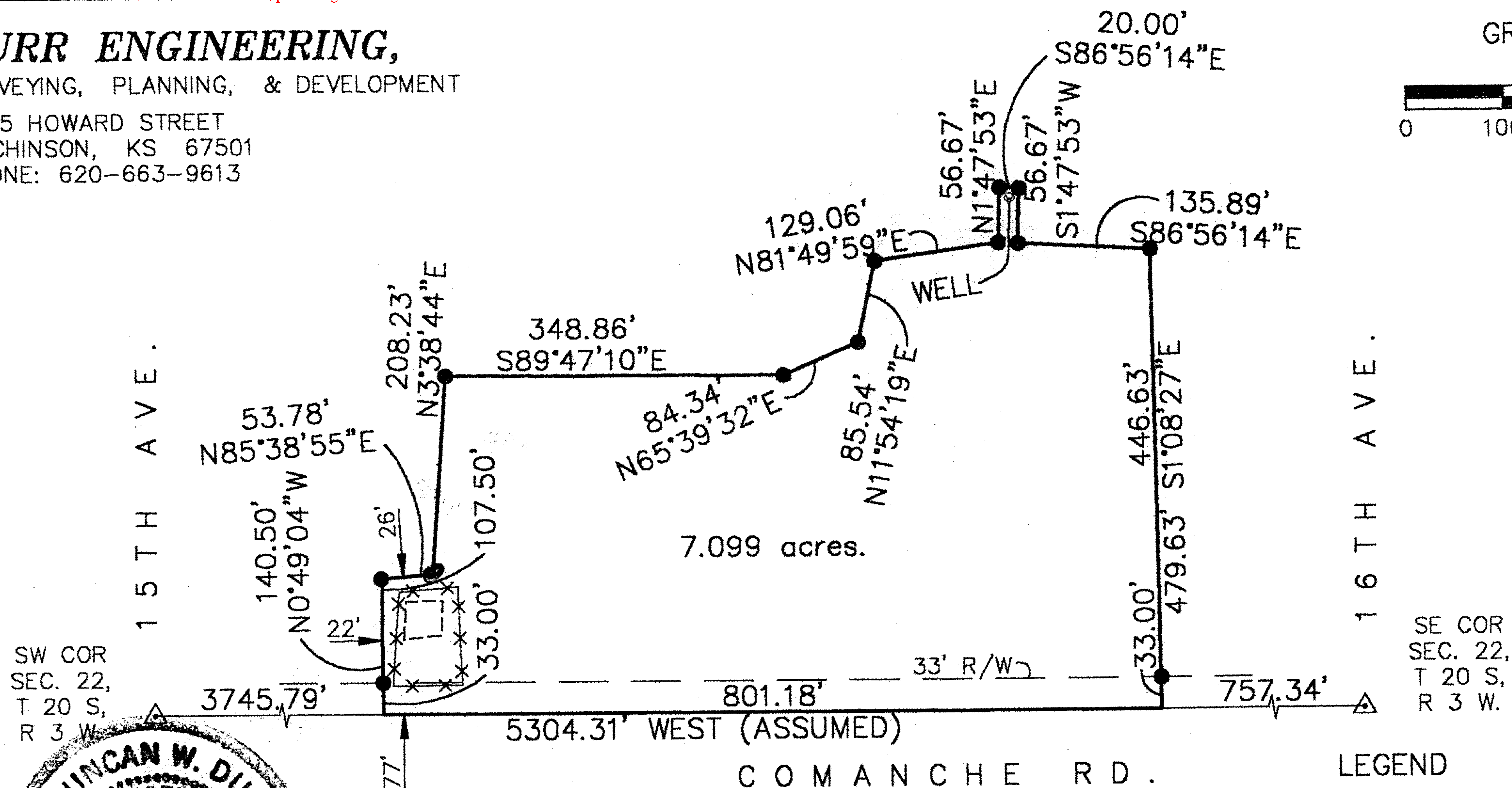
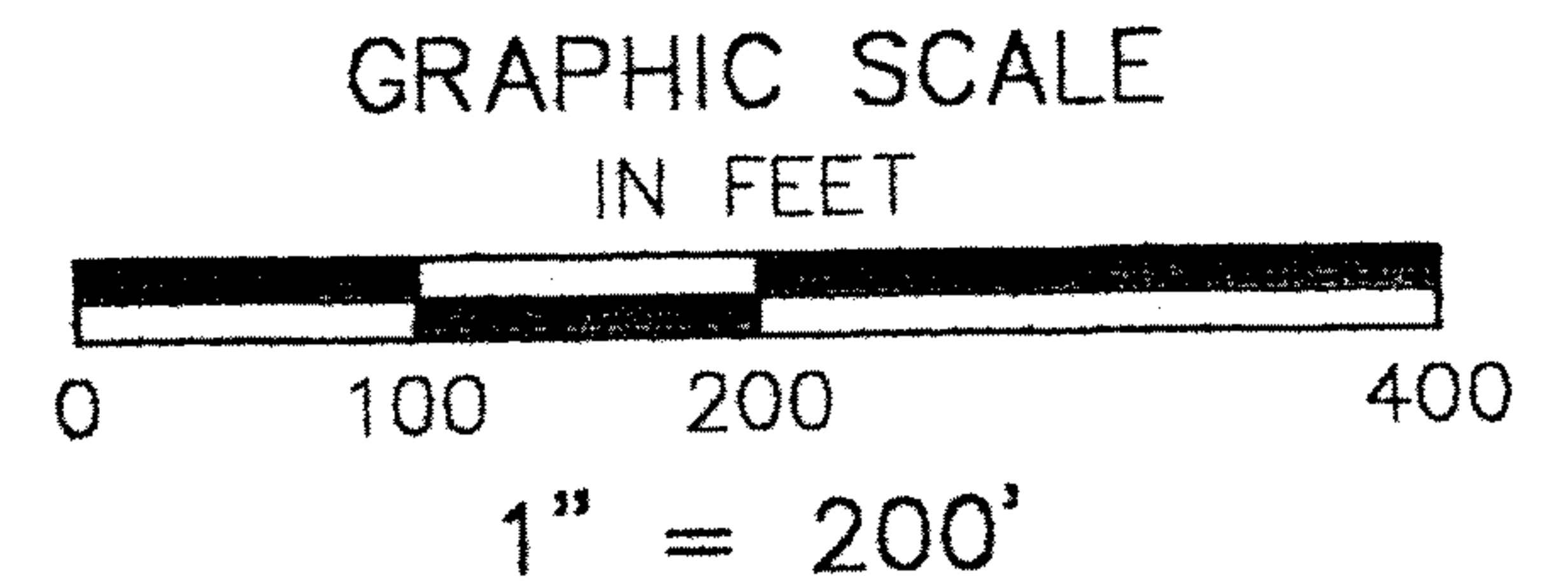


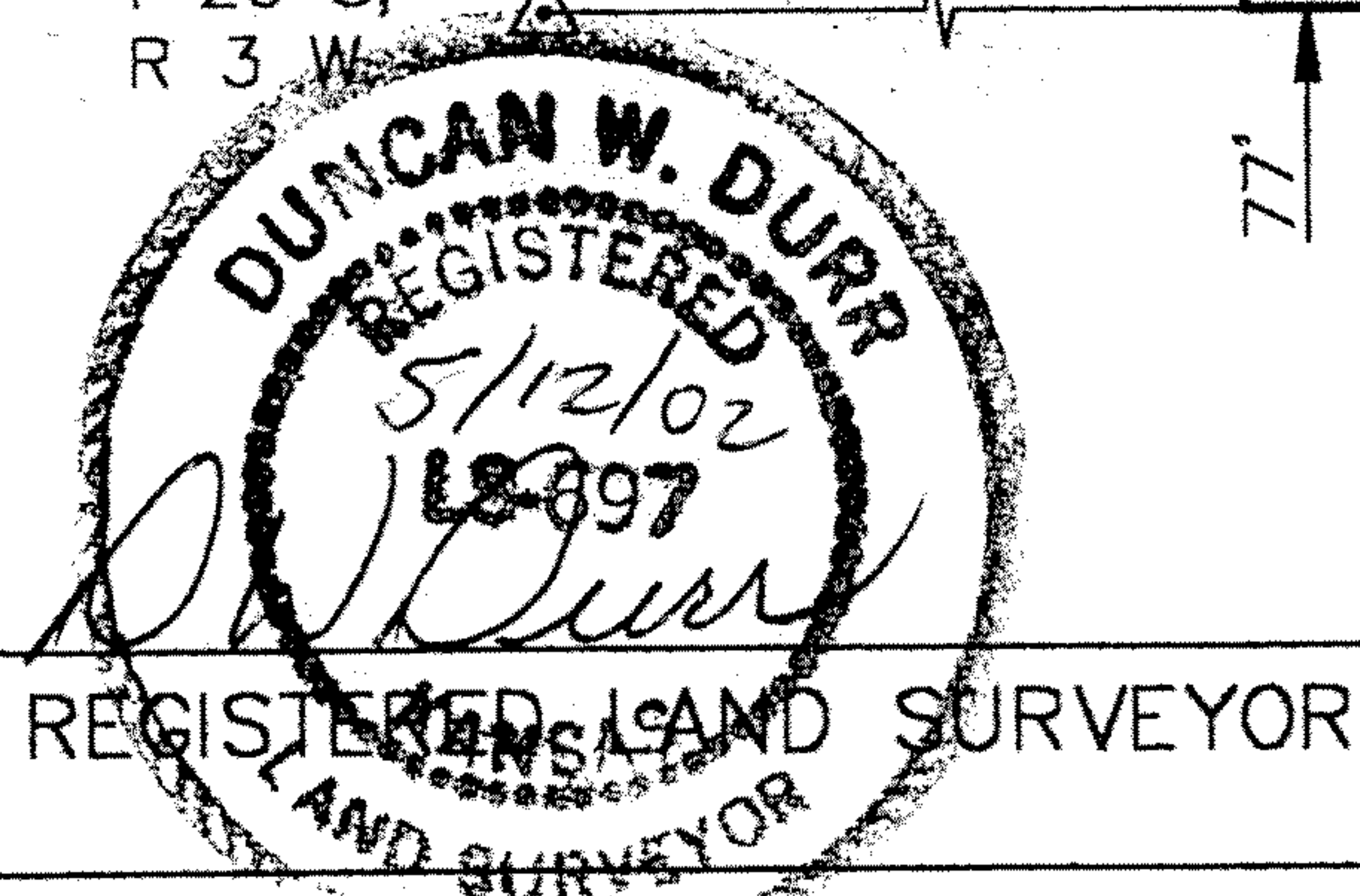
DURR ENGINEERING,

SURVEYING, PLANNING, & DEVELOPMENT

525 HOWARD STREET
HUTCHINSON, KS 67501
PHONE: 620-663-9613



I, DUNCAN W. DURR, DO HEREBY CERTIFY THE
HEREON SURVEY TO BE A TRUE AND ACCURATE
REPRESENTATION OF THE CONDITIONS FOUND
ON THE DATE HEREON WRITTEN.



CLIENT: SHERMAN NIEHAGE

DRAWN: EL CADMEISTER

PROJECT: 2144

SHEET: 1 OF: 1

A TRACT IN THE SOUTHEAST QUARTER OF SECTION 22, TOWNSHIP 20 SOUTH, RANGE 3 WEST OF THE SIXTH PRINCIPAL MERIDIAN, MORE PARTICULARLY DESCRIBED AS FOLLOWS: BEGINNING AT A POINT 757.34 FEET WEST OF THE SOUTHEAST CORNER OF SAID SOUTHEAST QUARTER; THENCE CONTINUING WEST, A DISTANCE OF 801.18 FEET; THENCE N0°49'04"W, A DISTANCE OF 140.50 FEET; THENCE N85°38'55"E, A DISTANCE OF 53.78 FEET; THENCE N3°38'44"E, A DISTANCE OF 208.23 FEET; THENCE S89°47'10"E, A DISTANCE OF 348.86 FEET; THENCE N65°39'32"E, A DISTANCE OF 84.34 FEET; THENCE N11°54'19"E, A DISTANCE OF 85.54 FEET; THENCE N81°49'59"E, A DISTANCE OF 129.06 FEET; THENCE N1°47'53"E, A DISTANCE OF 56.67 FEET; THENCE S86°56'14"E, A DISTANCE OF 20.00 FEET; THENCE S1°47'53"W, A DISTANCE OF 56.67 FEET; THENCE S86°56'14"E, A DISTANCE OF 135.89 FEET; THENCE S1°08'27"E, A DISTANCE OF 479.63 FEET TO THE POINT OF BEGINNING; TRACT CONTAINS 7.099 ACRES, EXCEPT THE SOUTH 33 FEET FOR ROAD RIGHT OF WAY AND ANY OTHER EASEMENTS OF RECORD; ALL IN McPHERSON COUNTY, KANSAS.

STATE: KANSAS

COUNTY: McPHERSON

SEC: 22 TWP: 20 S R: 3 W

DATE: 5/12/02