

Main Office  
2908 North Plum Street  
Hutchinson, KS 67502  
Office: (620) 665-7032  
Fax: (620) 663-7401



# Garber Surveying Service, P.A.

Branch Offices  
Manhattan 785-320-4810  
McPherson 620-241-4441  
Newton 316-283-5053  
Salina 785-404-6302  
Wichita 316-260-9933

SURVEY FOR: ROGER UNRUH

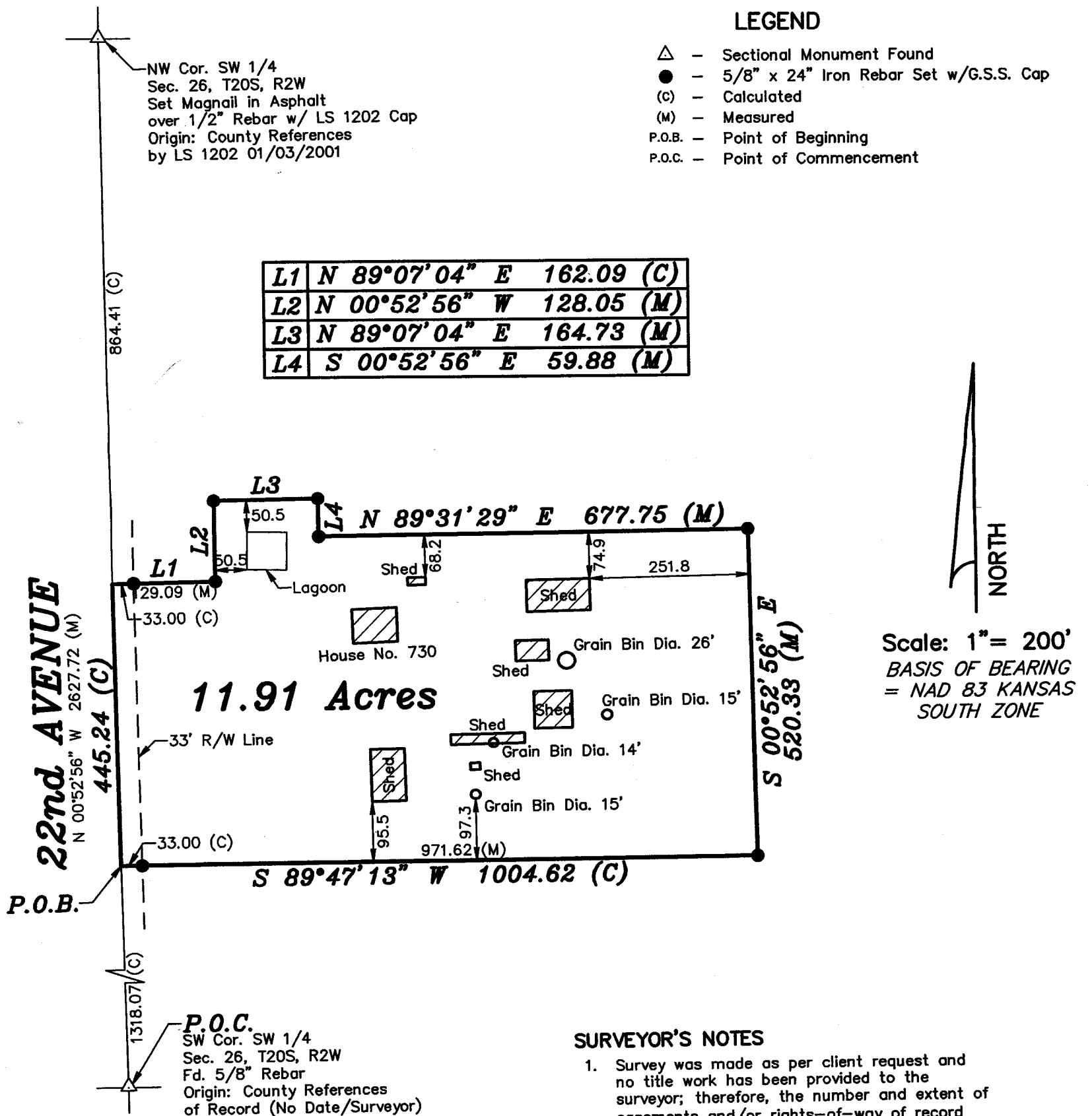
Project No. G2022-7

## DESCRIPTION:

A portion of the Southwest Quarter of Section 26, Township 20 South, Range 2 West of the 6th Principal Meridian, McPherson County, Kansas, described as follows by Nicholas D. Schmidt, PS #1492, this 18th day of January, 2022:

Commencing at the Southwest corner of said Southwest Quarter; thence on a NAD 83 Kansas South Zone bearing of North 00°52'56" West on the West line of said Southwest Quarter a distance of 1318.07 feet to the point of beginning; thence continuing North 00°52'56" West on said West line a distance of 445.24 feet; thence North 89°07'04" East perpendicular to said West line a distance of 162.09 feet; thence North 00°52'56" West parallel with said West line a distance of 128.05 feet; thence North 89°07'04" East perpendicular to said West line a distance of 164.73 feet; thence South 00°52'56" East parallel with said West line a distance of 59.88 feet; thence North 89°31'29" East a distance of 677.75 feet; thence South 00°52'56" East parallel with said West line a distance of 520.33 feet; thence South 89°47'13" West a distance of 1004.62 feet to the point of beginning.

Containing 11.91 Acres and subject to a road right of way easement along the West line thereof, and any other easements or restrictions of record.



DATE OF FIELD WORK: January 10, 2022

## SURVEYOR'S CERTIFICATE:

I hereby certify this plat to be a true, correct and complete representation of the property described above as surveyed under my supervision.  
Dated: January 18, 2022

Copyright © 2022 Garber Surveying Service, P.A.

Nicholas D. Schmidt, PS #1492

