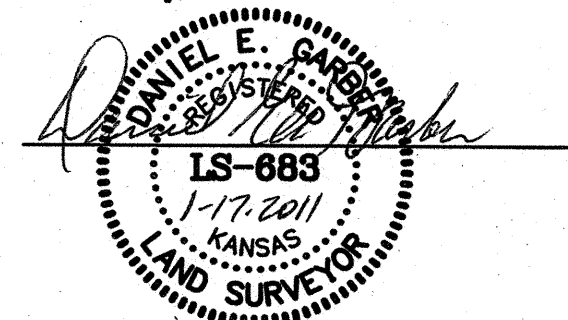



SURVEYOR'S CERTIFICATE:
I hereby certify this plat to be a true, correct and complete representation of the property described hereon, as surveyed under my supervision, this 17th day of January, 2011.



Prepared For: VIRGIL G. GOERING		Description: PORTIONS OF THE S 1/2 SEC. 24, T20S, R2W MCPHERSON CO, KS	
Prepared By: 		Garber Surveying Service, P.A. 2908 North Plum St. Hutchinson, Kansas 67502 Phone (620) 665-7032 • FAX (620) 663-7401	
		511 North Poplar Street Newton, Kansas 67114 Phone (316) 283-5053 • FAX (316) 283-5073	
Drawn By: SLR	Scale: 1" = 500'	Date of Field Work: January 5, 2011	Job No:
Checked By: DEG	Date: 01/17/2011	Sheet 1 of 1 Sheet(s)	G2010-709