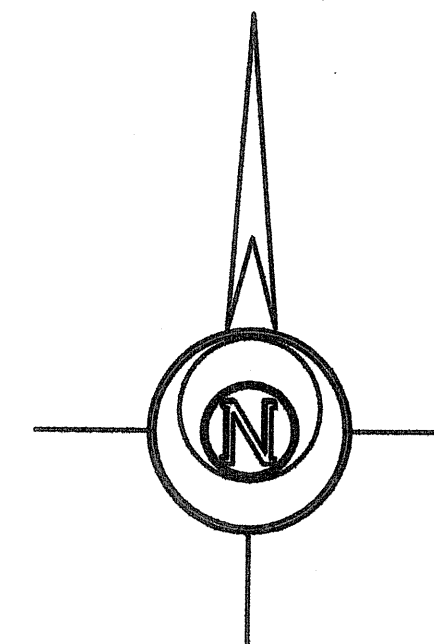
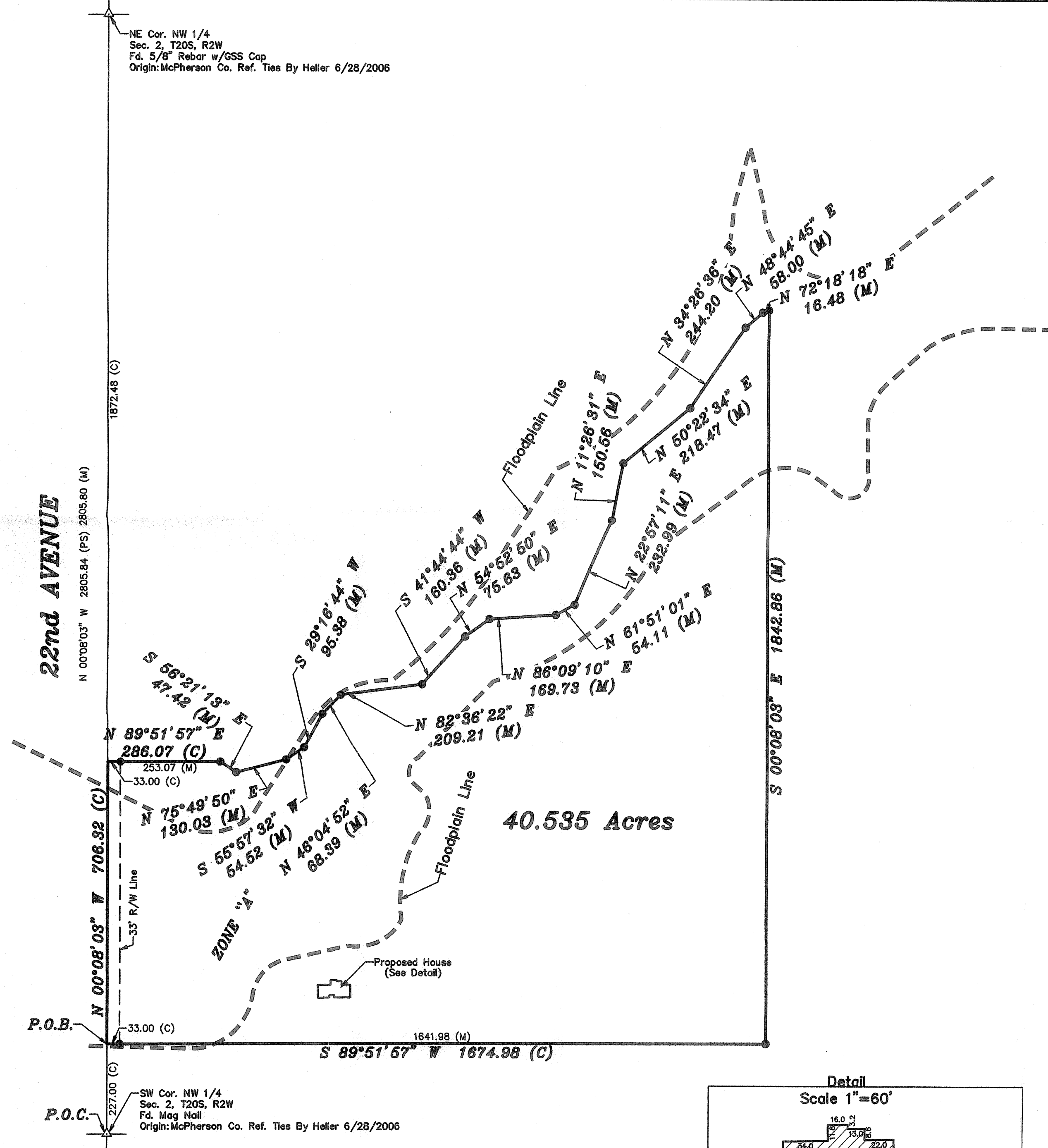


Saved: 9/23/2015 4:45:40 PM by KLOUTZEN
Plot Date & Time Thursday, September 24, 2015 2:25:56 PM Dwg Path C:\Users\rschmidt\Documents\GSS Projects\2015\663M\20150668 NAVD88 NAD83



BASIS OF BEARING = NAD 83 KANSAS SOUTH ZONE

LEGEND

- △ - Sectional Monument Found
- - 5/8" x 24" Iron Rebar Set w/G.S.S. Cap
- (C) - Calculated
- (M) - Measured
- (PS) - Previous Survey GSS Proj. #G1994-1086
- P.O.B. - Point of Beginning
- P.O.C. - Point of Commencement

DESCRIPTION:

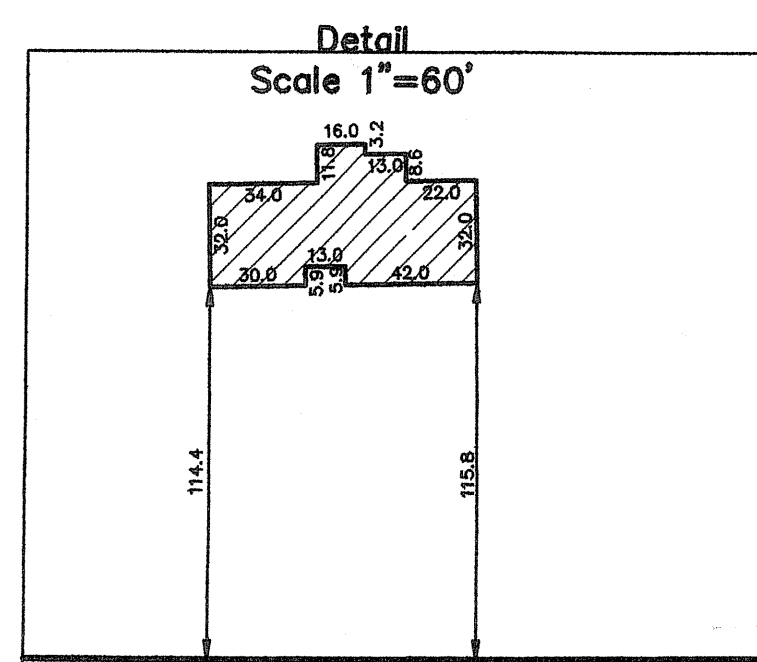
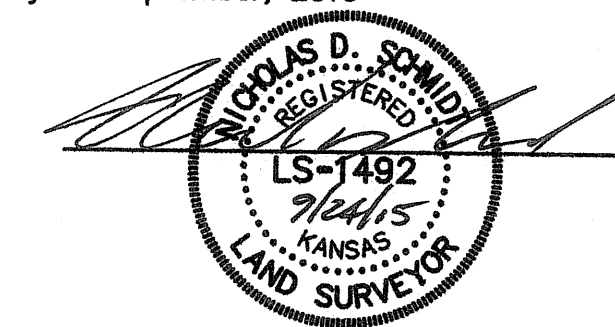
A portion of the Northwest Quarter of Section 2, Township 20 South, Range 2 West of the 6th Principal Meridian, McPherson County, Kansas described as follows:

Commencing at the Southwest corner of said Northwest Quarter; thence on a NAD 83 Kansas South Zone bearing of North 00°08'03" West on the West line of said Northwest Quarter a distance of 227.00 feet; thence continuing N 00°08'03" W on said West line a distance of 706.32 feet; thence North 89°51'57" East perpendicular to said West line a distance of 286.07 feet; thence South 56°21'13" East a distance of 47.42 feet; thence North 75°49'50" East a distance of 130.03 feet; thence North 55°57'32" East a distance of 54.52 feet; thence North 29°16'44" East a distance of 95.38 feet; thence North 46°04'52" East a distance of 68.39 feet; thence North 82°36'22" East a distance of 209.21 feet; thence North 41°44'44" East a distance of 160.36 feet; thence North 54°52'50" East a distance of 75.63 feet; thence North 86°09'10" East a distance of 169.73 feet; thence North 61°51'01" East a distance of 54.11 feet; thence North 22°57'11" East a distance of 232.99 feet; thence North 11°26'31" East a distance of 150.56 feet; thence North 50°22'40" East a distance of 218.48 feet; thence North 34°26'36" East a distance of 244.20 feet; thence North 48°44'45" East a distance of 58.00 feet; thence North 72°18'18" East a distance of 16.48 feet; thence South 0°08'03" East parallel with said West line a distance of 1842.86 feet; thence South 89°51'57" West perpendicular to said West line a distance of 1674.98 feet to the point of beginning.

Containing 40.535 Acres and subject to a road right of way easement across the West 33.00 feet thereof, and any other easements or restrictions of record.

SURVEYOR'S CERTIFICATE:

I hereby certify this plat to be a true, correct and complete representation of the property described hereon, as surveyed under my supervision, this 24th day of September, 2015



Prepared For: WAYNE TROYER		Description: A PORTION OF THE NW 1/4 SECTION 2, T20S, R2W McPHERSON COUNTY, KANSAS	
Prepared By: GSS		Garber Surveying Service, P.A.	
HUTCHINSON (Main Office) 2908 North Plum St. 67502 Ph. 620-665-7032 Fax 620-663-7401		McPHERSON (Branch Office) 115 East Martin 67460 Ph. 620-241-4441 Fax 620-241-4458	
NEWTON (Branch Office) 511 North Poplar St. 67114 Ph. 316-283-5053 Fax 316-283-5073			
Drawn By: KLL	Scale: 1"=200'	Date of Field Work: September 21, 2015	Job No:
Checked By: NDS	Date: 09/24/2015	Sheet 1 of 1 Sheet(s)	G2015-668