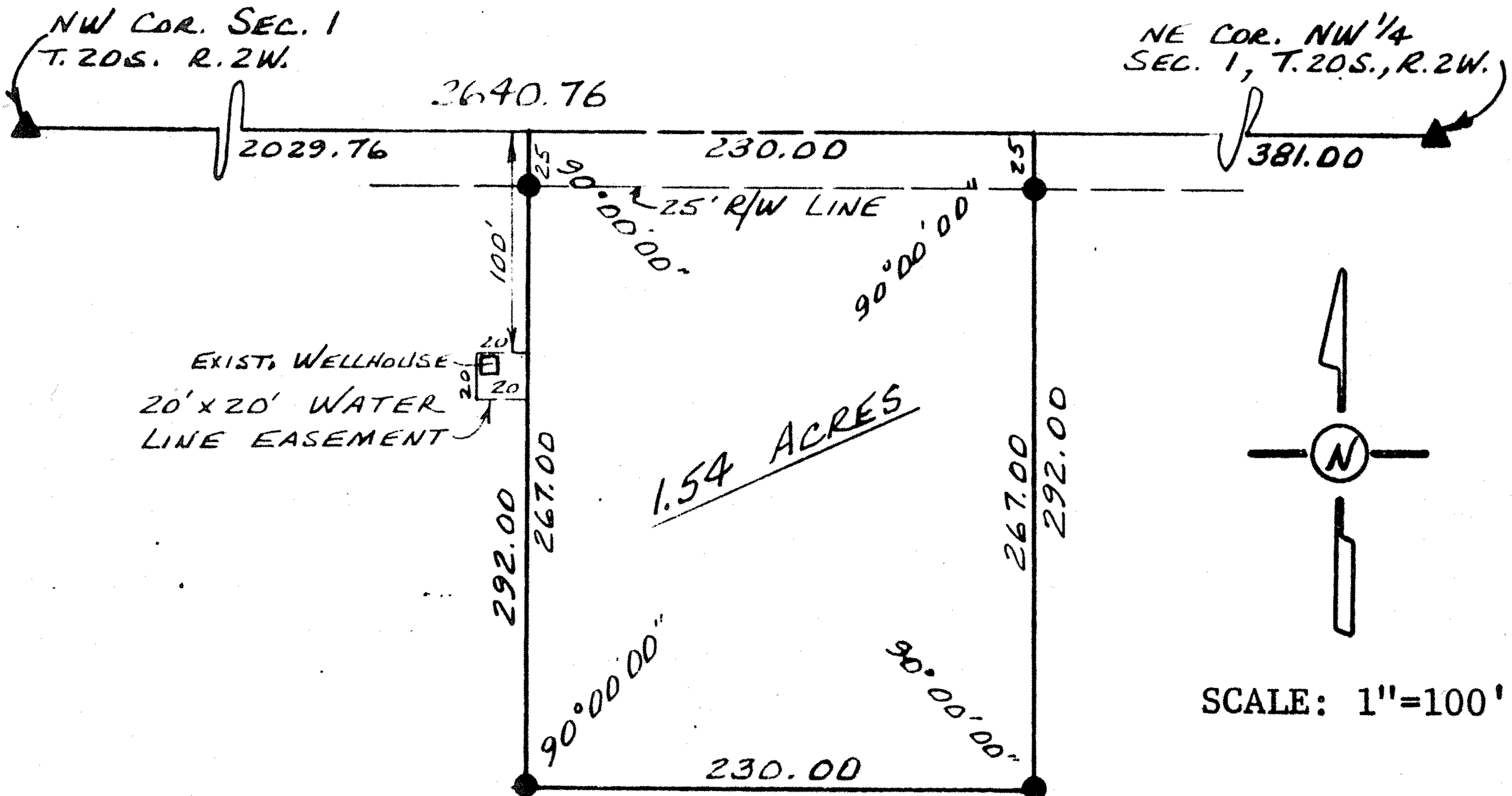


Survey for: Bud Anderson

By: Garber Surveying Service, P.A.
217 East First Avenue, Suite 9
Hutchinson, Kansas 67501

DESCRIPTION: A tract in the Northwest quarter (NW $\frac{1}{4}$) of Section 1,
Township 20 South, Range 2 West of the Sixth Principal Meridian
as more particularly described on the attached sheet.



Note: The NE and NW corners of the NW $\frac{1}{4}$ of Section 1, T20S, R2W of the 6th P.M. were reset by prorating the distances between the NE corner of said Section 1 and the NW corner of the NE $\frac{1}{4}$ of Section 3, T20S, R2W of the 6th P.M. Total distance measured was 13,203.79 ft.

- ▲ -Section subdivision corner set.
- -5/8" x 24" iron rebar set.

I hereby certify this plat to be a true, correct and complete representation of the property described above and on the attached sheet, as surveyed by me, this 21st day of July, 1982.

Daniel E. Garber
Daniel E. Garber RLS



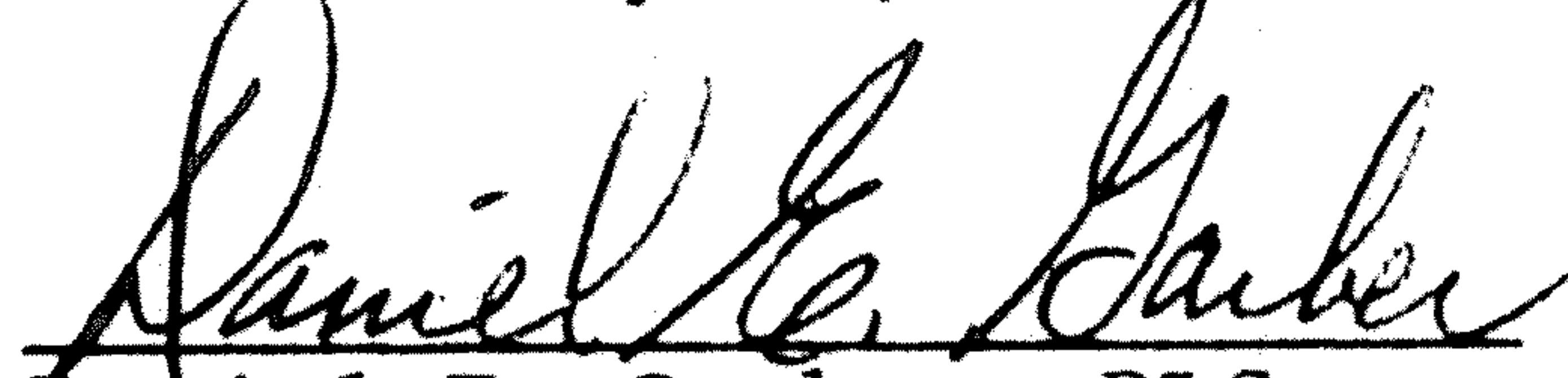
G82-84

DESCRIPTION

Commencing at the Northeast corner of the Northwest quarter (NW $\frac{1}{4}$) of Section 1, Township 20 South, Range 2 West of the Sixth Principal Meridian; thence West along the North line of said NW $\frac{1}{4}$ 381.00 ft. for a place of beginning; thence continuing West without deflection 230.00 ft.; thence with a deflection angle 90°00'00" left-South 292.00 ft.; thence with a deflection angle 90°00'00" left-East 230.00 ft.; thence with a deflection angle 90°00'00" left-North 292.00 ft. to the place of beginning containing 1.54 acres in McPherson County, Kansas subject to a road right-of-way easement across the North 25.00 ft. thereof, together with an easement for water supply and lines described as follows:

Commencing at the Northeast corner of the NW $\frac{1}{4}$ of Section 1, T.20 S., R.2 W. of the 6th P.M.; thence West along the North line of said NW $\frac{1}{4}$ 611.00 ft.; thence with a deflection angle 90°00'00" left-South 100.00 ft. for a place of beginning; thence continuing South without deflection 20.00 ft.; thence with a deflection angle 90°00'00" right-West 20.00 ft.; thence with a deflection angle 90°00'00" right-North 20.00 ft.; thence with a deflection angle 90°00'00" right-East 20.00 ft. to the place of beginning.

Dated: July 21, 1982


Daniel E. Garber RLS

