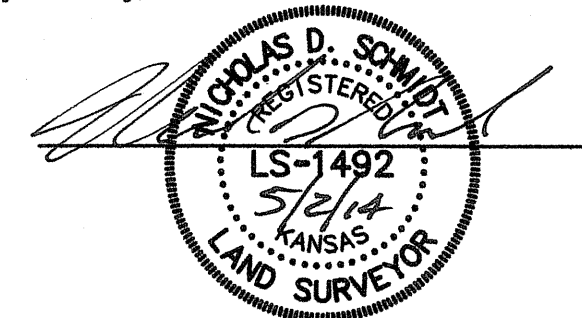





△ - Sectional Monument Found
 ● - 5/8" x 24" Iron Rebar Set w/G.S.S. Cap
 ✕ - Fence
 (C) - Calculated
 (M) - Measured
 (R) - Record measurement
 P.O.B. - Point of Beginning
 P.O.C. - Point of Commencement

I hereby certify this plat to be a true, correct and complete representation of the property described hereon, as surveyed under my supervision, this 2nd day of May, 2014.



Prepared For: CITY OF WINDOM		Description: A PORTION OF THE NE 1/4 SECTION 30, T19S, R5W MCPHERSON COUNTY, KANSAS	
Prepared By: <div style="display: flex; align-items: center;">  <div> Garber Surveying Service, P.A. HUTCHINSON (Main Office) 2908 North Plum St. 67502 Ph. 620-665-7032 Fax 620-663-7401 McPHERSON (Branch Office) 115 East Marlin 67460 Ph. 620-241-4441 Fax 620-241-4458 NEWTON (Branch Office) 511 North Poplar St. 67114 Ph. 316-283-5053 Fax 316-283-5073 </div> </div>			
Drawn By: CSS	Scale: 1"=100'	Date of Field Work: April 23, 2014	Job No: G2014-258
Checked By: NDS	Date: 05/02/2014	Sheet 1 of 1 Sheet(s)	

Saved 5/2/2014 8:12:37 AM by CSWANEY
Plot Date & Time Friday, May 02, 2014 8:13:13 AM Dwg Path \\Fs2\company\LDD\GSSFILES\2014\20140258_C3d\dwg\20140258_KP Auto SPC 1502 (ModToGrnd) No Datum