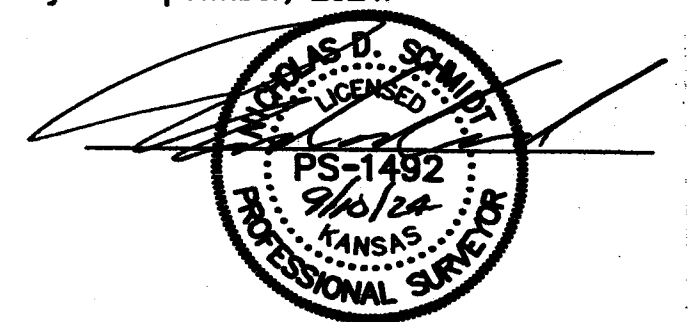


- LEGEND**
- △ - Sectional Monument Found
 - - Survey Monument Found 5/8" Rebar from (PS) unless otherwise noted
 - - 5/8" x 24" Iron Rebar Set w/GSS Cap
 - (C) - Calculated
 - (M) - Measured
 - (PS) - Previous Survey GSS Project #697-628 and Record measurement per (Bk. 253, Pg. 228)
 - P.O.B. - Point of Beginning
 - P.O.C. - Point of Commencement



Prepared For: WILLIAM SCHRAG TRUST		Description: A PORTION OF THE NE 1/4 SECTION 35, T19S, R4W MCPHERSON COUNTY, KANSAS	
Prepared By: GSS HUTCHINSON 2908 North Plum St. 67502 Ph. 620-665-7832 (Main Office)		Garber Surveying Service, P.A. BRANCH OFFICES: MCPHERSON Ph. 620-241-4441 SALINA Ph. 785-404-6302 MANHATTAN Ph. 785-320-4810 NEWTON Ph. 316-283-5053 WICHITA Ph. 316-260-9933	
Drawn By: MGO	Scale: 1"=200'	Date of Field Work: August 19, 2024	Job No: G2024-665
Checked By: NDS	Date: 09/10/2024	Sheet 1 of 1 Sheet(s)	