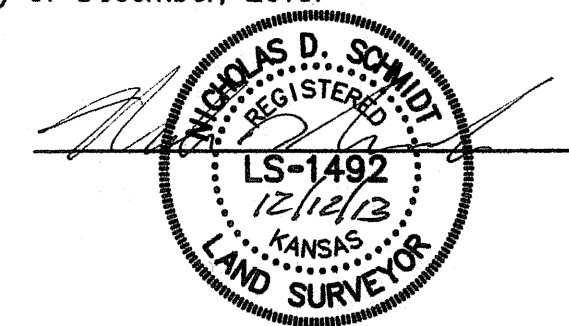
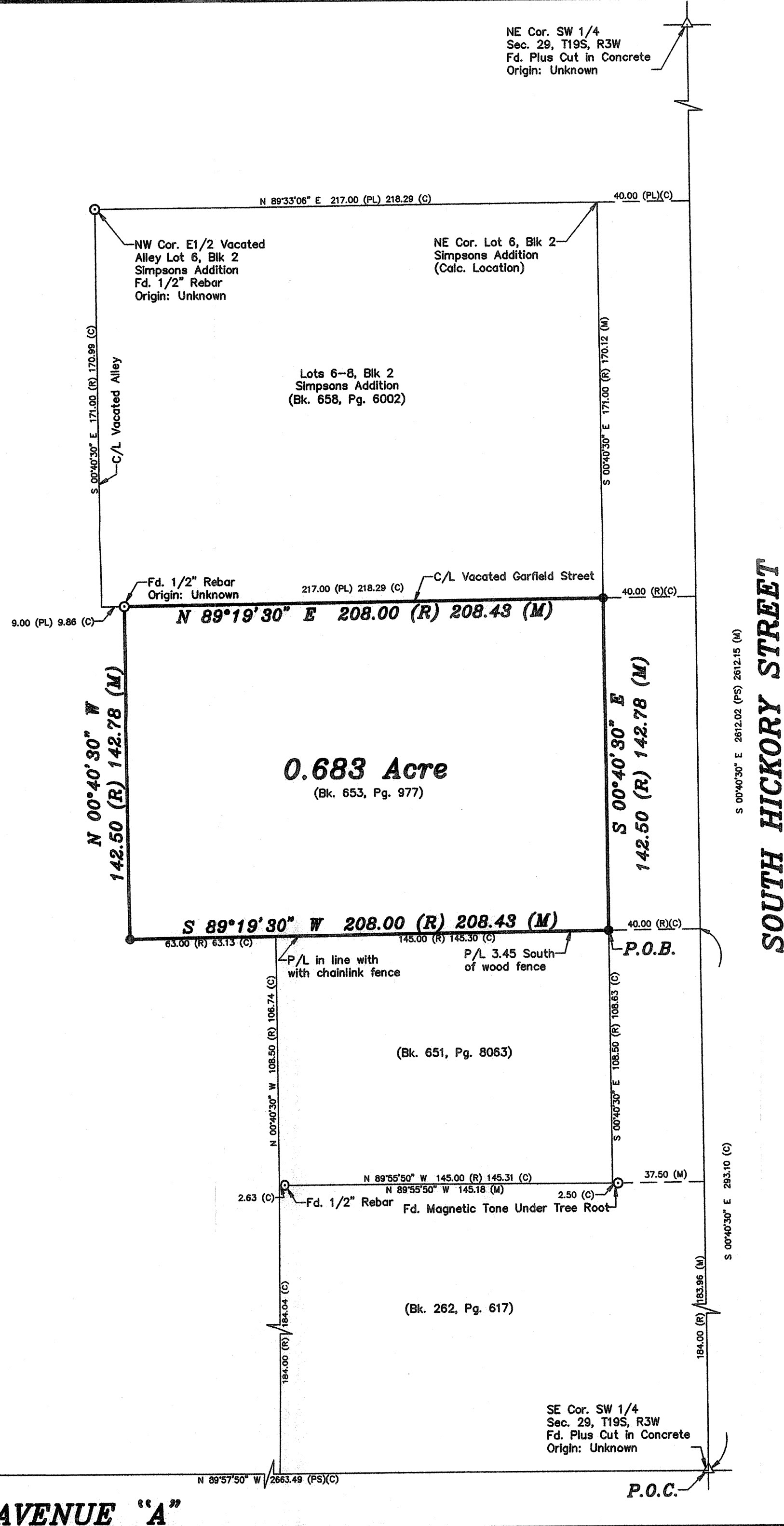


Saved 12/12/2013 2:52:07 PM by KLOUTZEN
Plot Date & Time: Thursday, December 12, 2013 3:39:32 PM Dwg Path U:\LDD\GSSFILES\2013\20130796 C3d\dwg\20130796 Auto



Prepared For:		Description:	
PREMIUM TITLE SERVICES		A PORTION OF THE S 1/2 OF THE SW 1/4 SECTION 29, T19S, R3W MCPHERSON COUNTY, KANSAS	
Prepared By:		Garber Surveying Service, P.A.	
GSS		HUTCHINSON (Main Office) 2908 North Plum St. 67502 Ph. 620-665-7032 Fax 620-663-7401 MCPHERSON (Branch Office) 115 East Marlin 67460 Ph. 620-241-4441 Fax 620-241-4458 NEWTON (Branch Office) 511 North Poplar St. 67114 Ph. 316-283-5053 Fax 316-283-5073	
Drawn By: KLL	Scale: 1"=40'	Date of Field Work: December 9, 2013	Job No:
Checked By: NDS	Date: 12/12/2013	Sheet 1 of 1 Sheet(s)	G2013-796