

LEGEND

- ▲ Section Monument Set (5/8" x 24" Iron Rebar w/G.S.S. Cap)
- △ Sectional Monument Found
- Set 5/8" Rebar w/G.S.S. Cap
- Guy Anchor
- ⊕ Proposed Light Pole
- ⊕ Power Pole
- (C) Calculated
- (M) Measured
- (R) Record measurement
- (PS) Previous Survey-BPU Industrial Park Plat
- (RR) Railroad Plans
- ⊗ Proposed 20' Diameter Conifer Tree

DESCRIPTION OF RECORD (Book 640, Page 1900):

A part of the Southwest Quarter (SW 1/4) of Section Twenty-three (23), Township Nineteen (19) South, Range Three (3) West of the Sixth Principal Meridian, described as follows:

Beginning at the South Quarter corner of Section 23, thence West along the South line of said Section a distance of 354.8 feet to the place of beginning, thence North a distance of 330 feet, thence East a distance of 224.9 feet to the West right of way line of I-135 Highway, thence South along said right of way line a distance of 330.0 feet to the South line of Section 23, thence West along said South line a distance of 223.0 feet to point of beginning, McPherson County, Kansas.

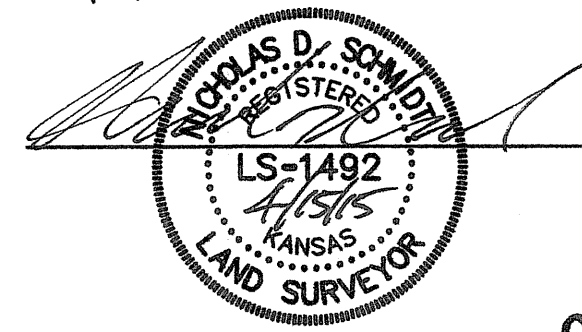
DIGSAFE:

Utilities shown were located by respective owners. Any Utilities not shown are due to no response to Kansas One Call "1-800-DIG-SAFE" Ticket #15046973.

Utility locations shown hereon are based on information received from Kansas One-Call (1-800-DIG-SAFE) identified by Ticket #15046973 on October 10, 2015. Before any digging, contractor should verify utility locations by calling 1-800-DIG-SAFE.

SURVEYOR'S CERTIFICATE:

I hereby certify this plot to be a true, correct and complete representation of the property described hereon, as surveyed under my supervision, this 15th day of April, 2015.



C/L UNION PACIFIC RAILROAD

6.713 Acres

Delta= 01°21'34"
R= 17712.34'
L= 420.28' (M)
T= 210.16'
C= 420.28'

Delta= 00°56'07"
R= 17712.34'
L= 289.11' (C)
T= 144.56'
C= 289.11'

INTERSTATE 135

Prepared For: TENAWA RESOURCE MANAGEMENT		Description: A PORTION OF THE E 1/2, SW 1/4, SECTION 23, T19S, R3W, McPHERSON COUNTY, KANSAS	
Prepared By: GSS		Garber Surveying Service, P.A.	
HUTCHINSON (Main Office) 2908 North Plum St. 67502 Ph. 620-665-7832 Fax 620-663-7401		McPHERSON (Branch Office) 115 East Marlin 67460 Ph. 620-241-4441 Fax 620-241-4458	
NEWTON (Branch Office) 511 North Poplar St. 67114 Ph. 316-283-5053 Fax 316-283-5073			
Drawn By: SLW	Scale: 1"=50'	Date of Field Work: February 16, 2015	Job No: G2015-103
Checked By: NDS	Date: 04/15/2015	Sheet 1 of 1 Sheet(s)	