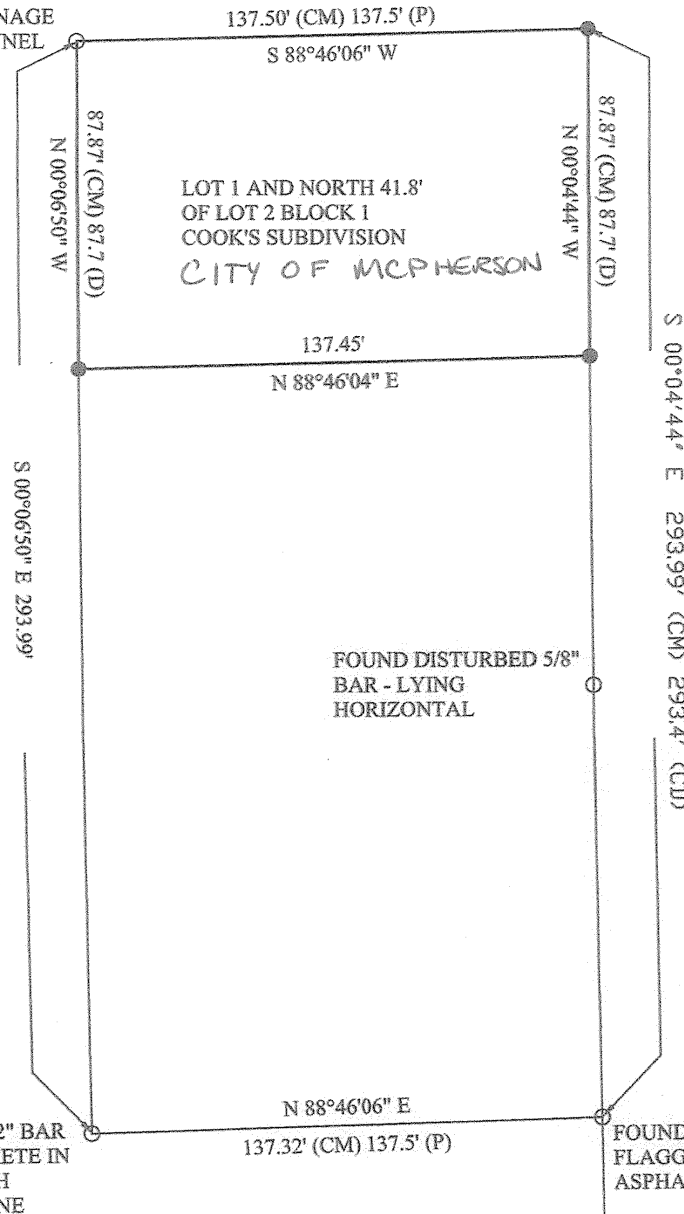


FOUND 1/2" BAR
ABOUT 1' SOUTH OF
TOP EDGE
DRAINAGE
CHANNEL



ELM STREET

FOUND DISTURBED 5/8"
BAR - LYING
HORIZONTAL

FOUND 1/2" BAR
IN CONCRETE IN
LINE WITH
POWERLINE

FOUND SPIKE W/
FLAGGING AT EDGE
ASPHALT DRIVE

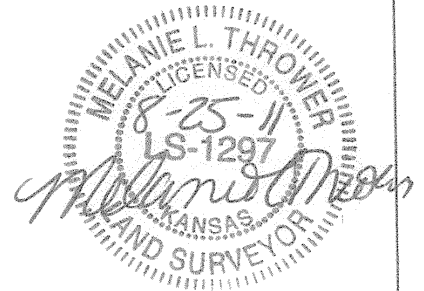
ON AUGUST 24, 2011 MELANIE THROWER LAND SURVEYOR PERFORMED THE
SURVEY AS SHOWN ON THIS PLAT WITH TOPCON GR3 GPS.



1339 N. ELM ST.

DRAWN	DATE	M.E.L.S.
	08/25/11	845 1800 AVE.
APPROVED	DATE	ABILENE, KS
		620-242-7170
SCALE	SHEET	PROJECT NO.
1" = 50'	1 of 1	CRAIG MILLER

S 00°05'03" E
158.29'



FOUND 1/2" BAR IN
CONCRETE ALONG
SOUTH SIDE OF
BUSHES