

Project No. G2015-545

SURVEY FOR: MTC

DESCRIPTION FOR PROPOSED LEASE AREA:

A portion of the Northeast Quarter of Section 17, Township 19 South, Range 3 West of the 6th Principal Meridian, McPherson County, Kansas described as follows:

Commencing at the Southeast corner of said Northeast Quarter; thence on a NAD 83 Kansas South Zone bearing of North 00°13'54" East on the East line of said Northeast Quarter a distance of 49.30 feet; thence South 89°46'06" West perpendicular to said East line a distance of 40.00 feet to the point of beginning; thence continuing South 89°46'06" West perpendicular to said East line a distance of 48.25 feet; thence North 00°13'54" West parallel with said East line a distance of 53.00 feet; thence North 87°46'08" East a distance of 7.76 feet; thence South 46°37'56" East a distance of 26.75 feet; thence North 89°46'08" East perpendicular to said East line a distance of 21.12 feet; thence South 00°13'54" East parallel with said East line a distance of 34.82 feet to the point of beginning.

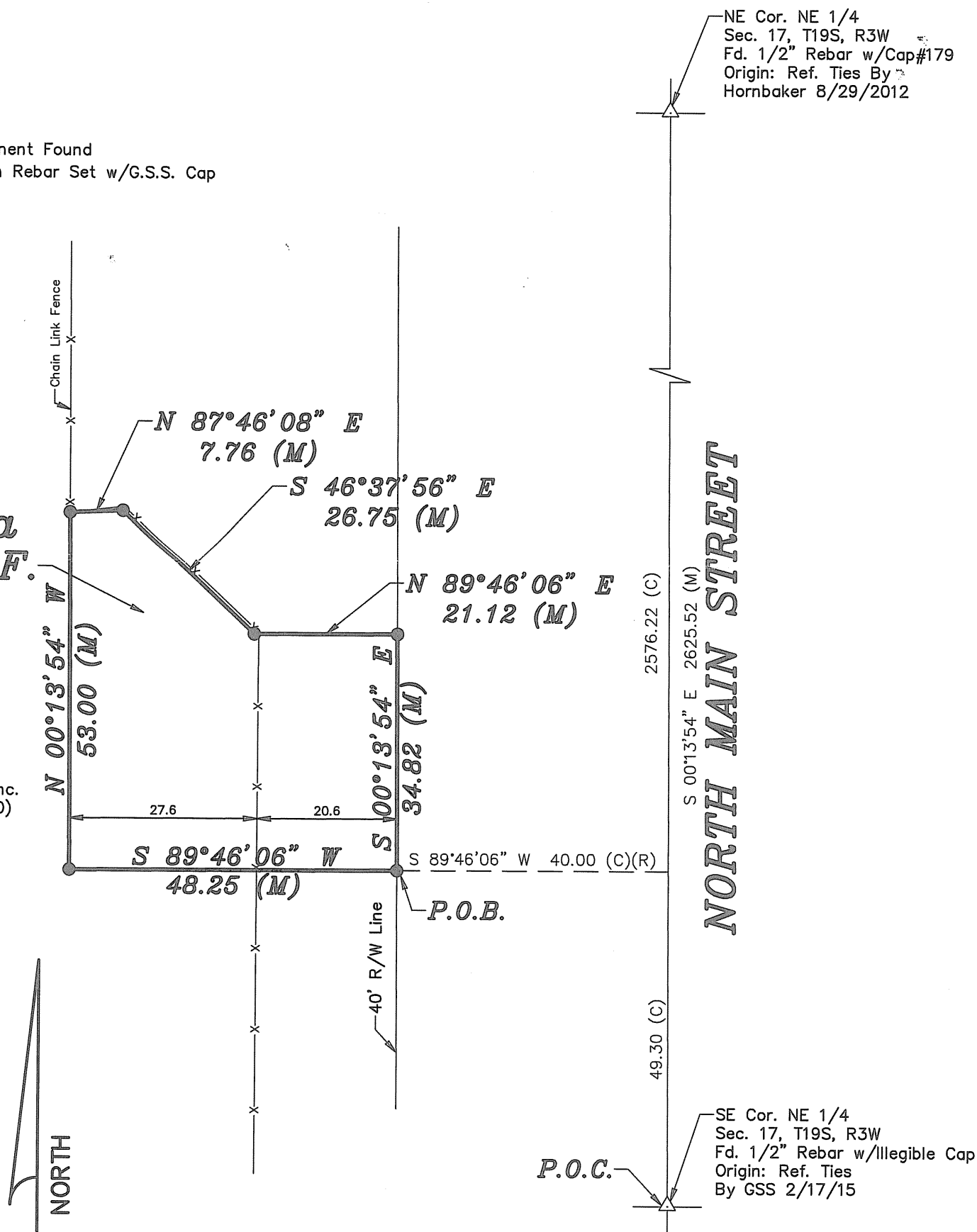
Containing **2000.80 Square Feet** and subject to any easements or restrictions of record.

LEGEND

- △ - Sectional Monument Found
 ● - 5/8" x 24" Iron Rebar Set w/G.S.S. Cap
 (C) - Calculated
 (M) - Measured

*Proposed
Lease Area
2000.80 S.F.*

Owner: Evergreen
Storage Buildings Inc.
(Bk. 641, Pg. 1970)



Scale: 1"=20'

BASIS OF BEARING = NAD 83 KANSAS SOUTH ZONE

DATE OF FIELD WORK: August 5, 2015

SURVEYOR'S CERTIFICATE:

I hereby certify this plat to be a true, correct and complete representation of the property described above as surveyed under my supervision.

Dated: August 6, 2015

Copyright © 2015 Garber Surveying Service, P.A.

Nicholas D. Schmidt LS #1492