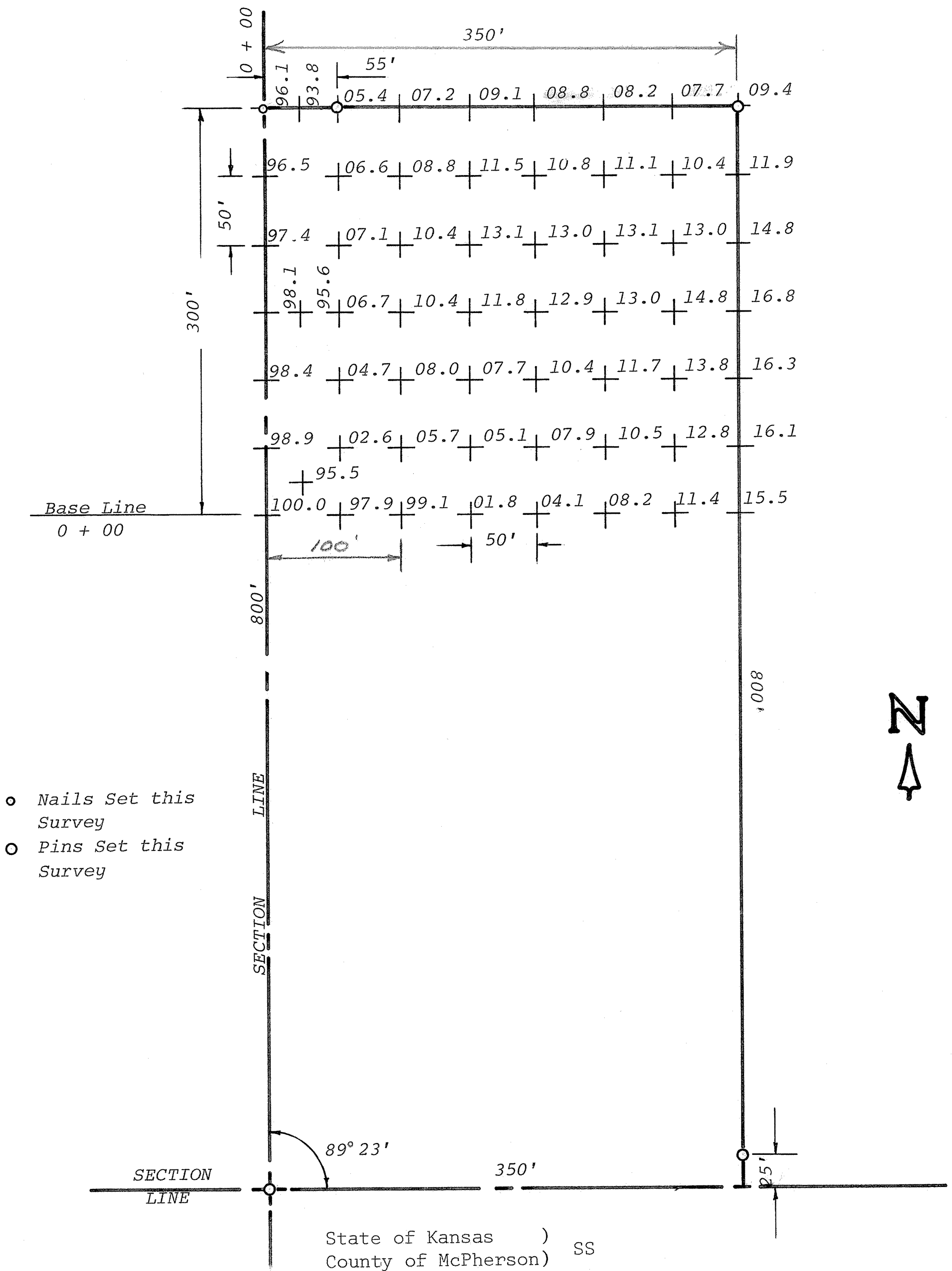


A SURVEY IN THE SW¹/₄ OF SEC. 3
T19S, R1W
MC PHERSON COUNTY, KANSAS

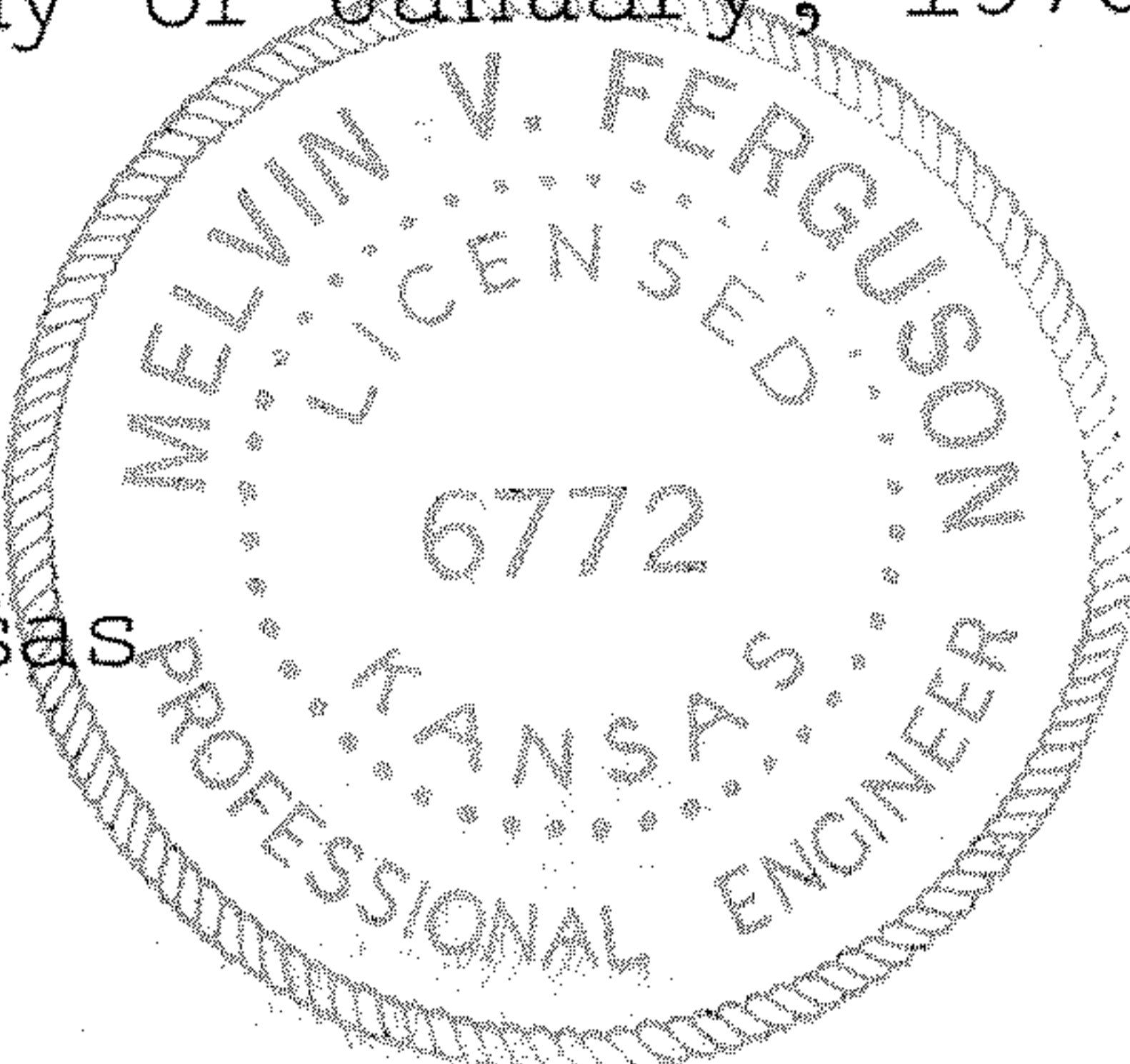


I, Melvin Ferguson, County Engineer of McPherson County, Kansas, do hereby certify that under my supervision a survey was made of a tract of land in the SW¹/₄ of Section 3, T19S, R1W of the 6th P.M. and described as follows: Beginning at the SW corner of Section 3, T19S, R1W; thence North, on Section Line, 800 feet; thence East, parallel with the south line of said section, 350 feet; thence south, parallel with the West line of said section, 800 feet; thence west, on Section Line, 350 feet to the place of beginning. Said tract contains 6.4 acres more or less. The above plat is a true exhibit of said survey as far as it is known to me.

Survey called for by George Jones

Signed on this 10th day of January, 1975

Melvin Ferguson
Melvin Ferguson, P.E.
County Engineer
McPherson County, Kansas



ENCLOSURE