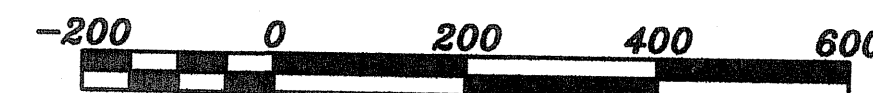
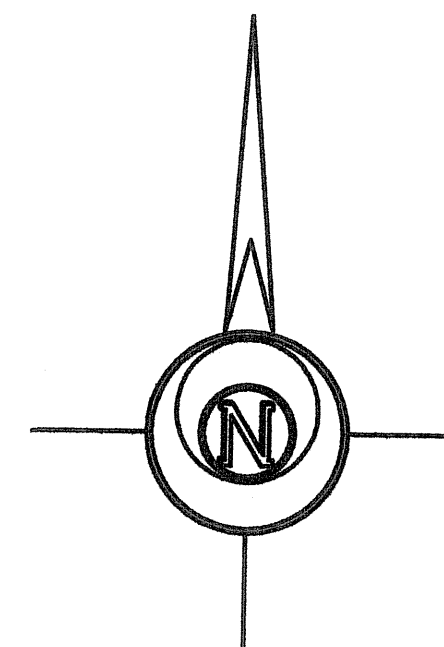
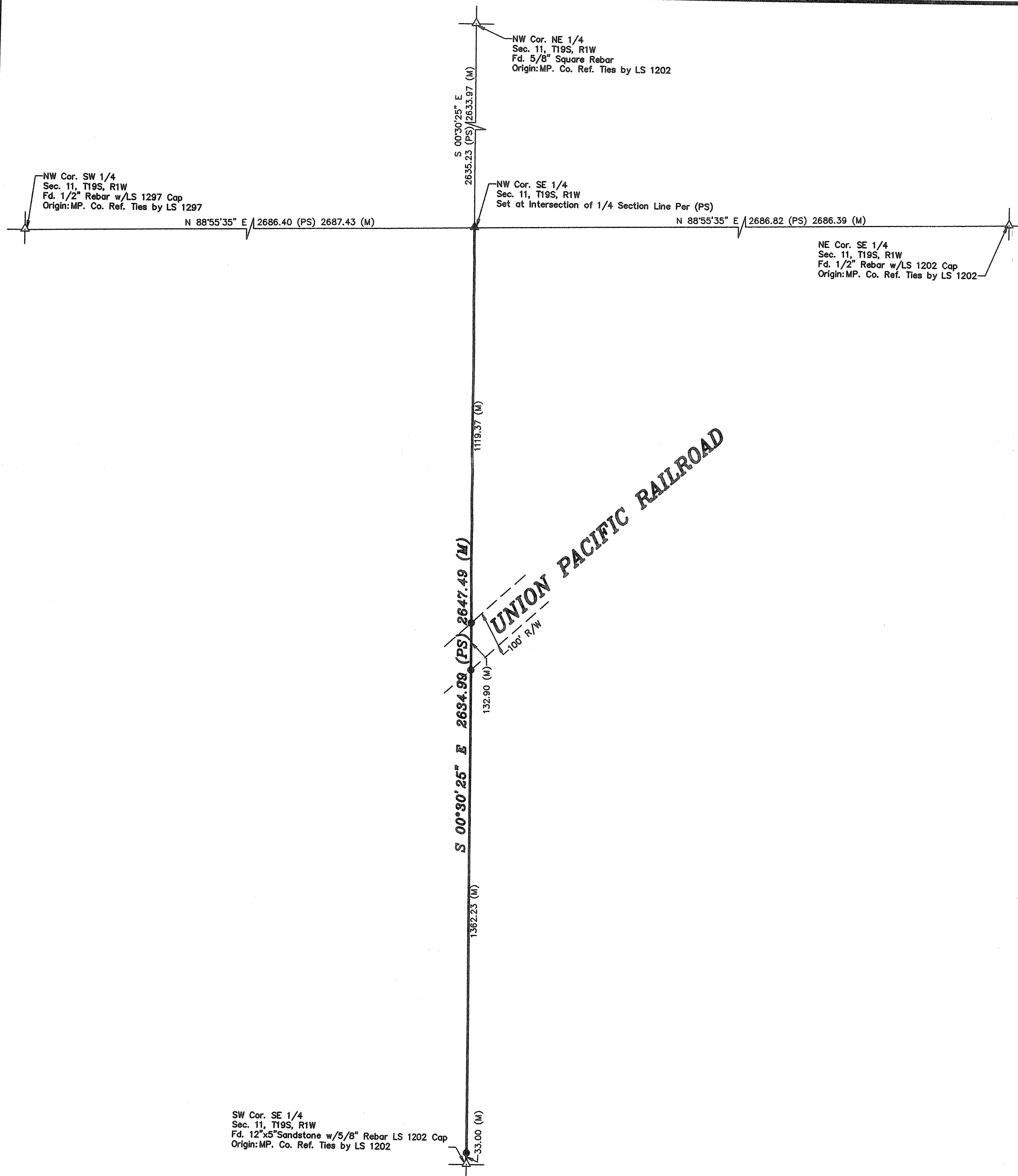


Saved 12/15/2015 3:36:51 PM by KLOUTZEN  
Plot Date & Time Tuesday, December 15, 2015 3:37:03 PM Dwg Path U:\LDD\GSSFILES\2015\20150822 C3d\dwg\20150822 Auto S Ground



BASIS OF BEARING = NAD 83 KANSAS SOUTH ZONE

#### LEGEND

- △ - Sectional Monument Found
- ▲ - Section Monument Set (5/8" x 24" Iron Rebar w/G.S.S. Cap)
- - 5/8" x 24" Iron Rebar Set w/G.S.S. Cap
- (C) - Calculated
- (M) - Measured
- (PS) - Previous Survey By Rathbone LS 1117 Dated 9/27/1994

#### DESCRIPTION:

A survey of the West line of the Southeast Quarter of Section 11, Township 19 South, Range 1 West of the 6th Principal Meridian, McPherson County, Kansas.

#### SURVEYOR'S NOTES:

1. The discrepancies in the measurements to the (PS) are the result of the (PS) only showing calculated positions by single proportionate measurement at the S 1/4 and E 1/4 corners. These corners have either been found or established after said (PS).

#### SURVEYOR'S CERTIFICATE:

I hereby certify this plat to be a true, correct and complete representation of the property described hereon, as surveyed under my supervision, this 15th day of December, 2015



Prepared For: <b>DWIGHT DECKER</b>		Description: <b>THE WEST LINE OF THW SE 1/4 OF SECTION 11, T19S, R1W McPHERSON COUNTY, KANSAS</b>	
Prepared By: <b>GSS</b>		Garber Surveying Service, P.A.	
HUTCHINSON (Main Office) 2908 North Plum St. 67502 Ph. 620-663-7032 Fax 620-663-7401		McPHERSON (Branch Office) 115 East Marlin 67460 Ph. 620-241-4441 Fax 620-241-4458	
NEWTON (Branch Office) 511 North Poplar St. 67114 Ph. 316-283-5053 Fax 316-283-5073			
Drawn By: KLL	Scale: 1"=200'	Date of Field Work: November 12, 2015	Job No:
Checked By: NDS	Date: 12/15/2015	Sheet 1 of 1 Sheet(s)	G2015-822