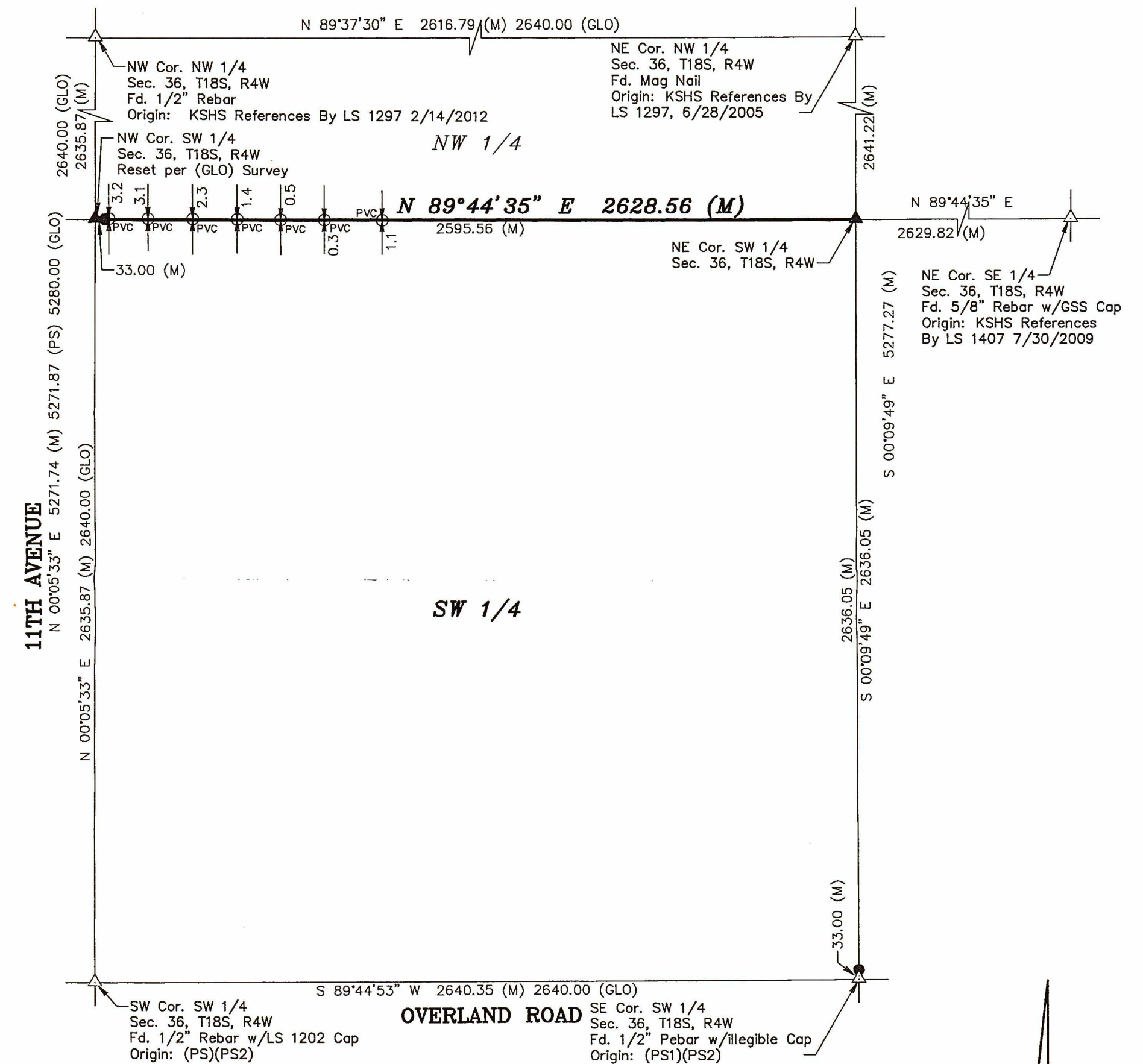



Garber Surveying Service, P.A.

Branch Offices
Manhattan 785-320-4810
McPherson 620-241-4441
Newton 316-283-5053
Salina 785-404-6302
Wichita 316-260-9933

Project No. G2022-774

A survey of the North line of the Southwest Quarter of Section 36, Township 18 South, Range 4 West of the 6th Principal Meridian, McPherson County, Kansas.



LEGEND


- △ - Sectional Monument Found
 ▲ - Section Monument Set (5/8" x 24" Iron Rebar w/GSS CLS 52 Cap)
 ● - 5/8" x 24" Iron Rebar Set w/G.S.S. Cap
 PVC ○ - 3" PVC Riser
 (M) - Measured
 (PS) - Previous Survey By LS 1297 3/8/2012
 (PS1) - Previous Survey By LS 1202 7/10/2020
 (PS2) - Previous Survey By LS 1354 7/15/2009
 (GLO) - General Land Office

I hereby certify this plat to be a true, correct and complete representation of the property described above as surveyed under my supervision.
Dated: September 16, 2022

Copyright © 2022 Garber Surveying Service, P.A.

Scale: 1" = 400'
BASIS OF BEARING
= NAD 83 KANSAS
SOUTH ZONE

the property described above



Nicholas D. Schmidt, PS #1492