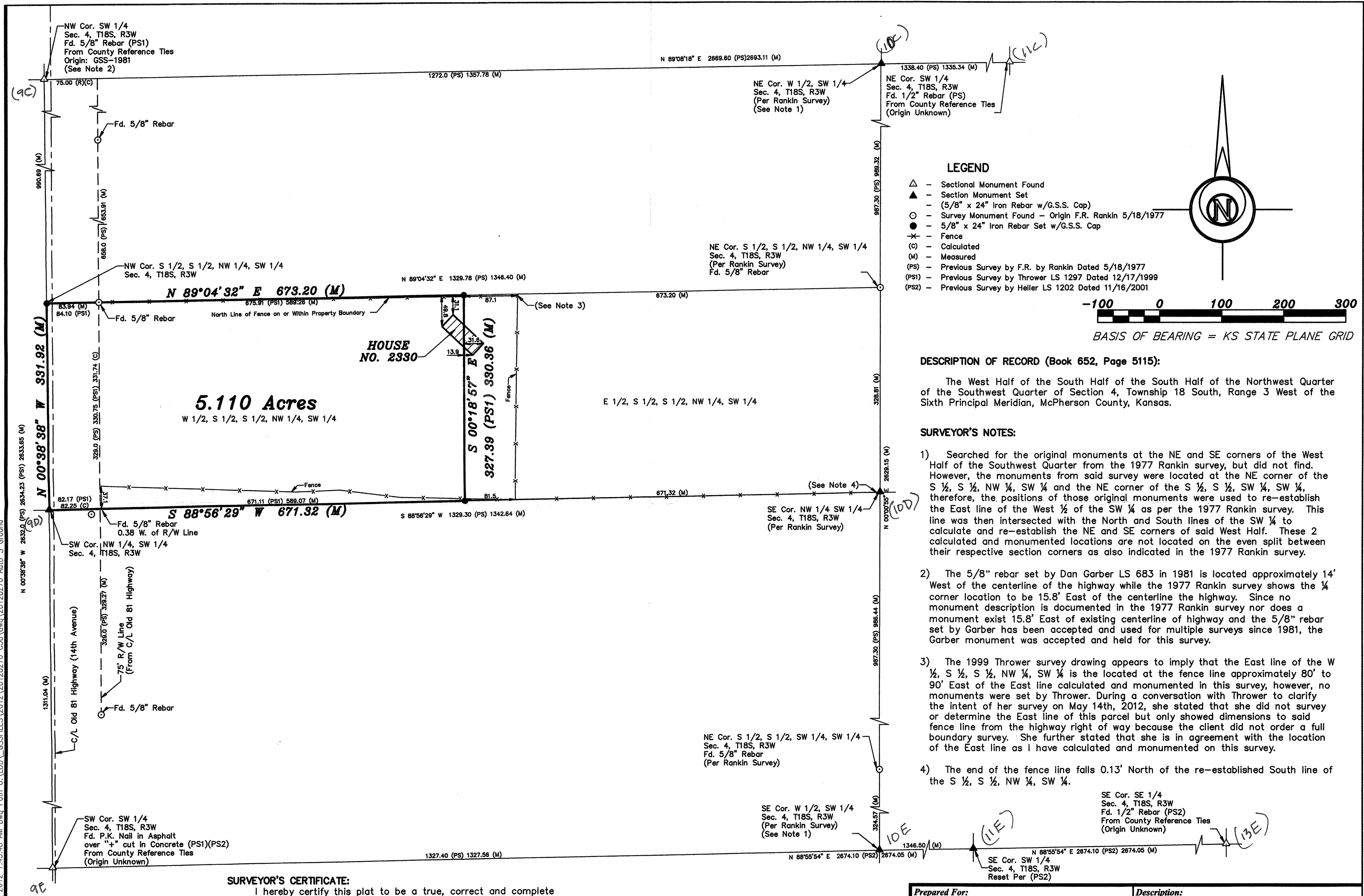


Saved 5/21/2012 5:14:25 PM by NSCHMIDT
Plot Date & Time Tuesday, May 22, 2012 7:45:48 AM Dwg Path U:\LDD\GSSFILES\2012\20120270 C3d\dwg\20120270 Auto S Ground



SURVEYOR'S CERTIFICATE:
I hereby certify this plat to be a true, correct and complete representation of the property described hereon, as surveyed under my supervision, this 22nd day of May, 2012.



Prepared For: DANNY NEWHOUSE		Description: A PORTION OF THE NW 1/4 SW 1/4 OF SEC. 4, T18S, R3W MCPHERSON COUNTY, KANSAS	
Prepared By: GSS		Garber Surveying Service, P.A. 2908 North Plum St. Hutchinson, Kansas 67502 Phone (620) 665-7032 • FAX (620) 663-7401 115 East Marlin Suite 102 McPherson, Kansas 671460 Phone (620) 241-4441 • FAX (620) 241-4458	
Drawn By: KLL	Scale: 1"=100'	Date of Field Work: May 10, 2012	Job No: G2012-270
Checked By: NDS	Date: 05/22/2012	Sheet 1 of 1 Sheet(s)	