

Main Office  
2908 North Plum Street  
Hutchinson, KS 67502  
Office: (620) 665-7032  
Fax: (620) 663-7401



Branch Offices  
Manhattan 785-320-4810  
McPherson 620-241-4441  
Newton 316-283-5053  
Salina 785-404-6302  
Wichita 316-260-9933

SURVEY FOR: HORIZON FARM & RANCH REALTY

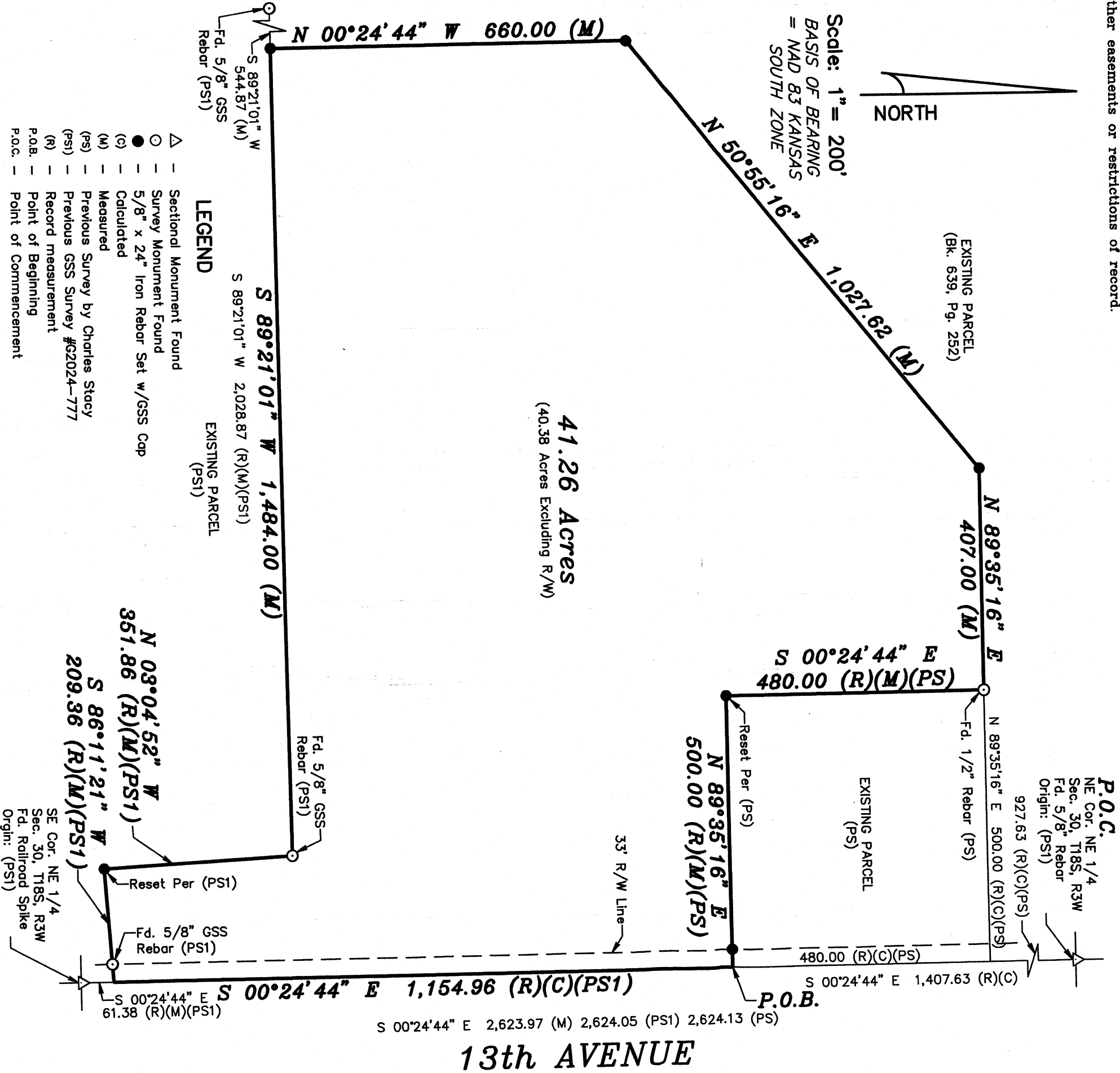
Project No. G2024-756

DESCRIPTION:

A portion of the Northeast Quarter of Section 30, Township 18 South, Range 3 West of the 6th Principal Meridian, McPherson County, Kansas, described as follows by Nicholas D. Schmidt, PS #1492, this 30th day of September, 2024:

Commencing at the Northeast corner of said Northeast Quarter; thence on a NAD 83 Kansas South Zone bearing of South 00°24'44" East on the East line of said Northeast Quarter a distance of 1407.63 feet (Record) to the point of beginning; thence continuing South 00°24'44" East on said East line a distance of 1154.96 feet (Record) to the Southeast corner of a parcel described in Book 639, Page 252 recorded at the McPherson County Register of Deeds Office; thence South 86°11'21" West on the South line of said parcel a distance of 209.36 feet (Record); thence North 03°04'52" West on said South line a distance of 351.86 feet (Record); thence South 89°21'01" West on said South line a distance of 1484.00 feet; thence North 00°24'44" West parallel with said East line a distance of 660.00 feet; thence North 50°55'16" East a distance of 1027.62 feet; thence North 89°35'16" East parallel to said East line a distance of 407.00 feet to a point 500.00 feet (Record) West of said East line; thence South 00°24'44" East parallel with said East line a distance of 480.00 feet (Record); thence North 89°35'16" East perpendicular to said East line a distance of 500.00 feet (Record) to the point of beginning.

The above described tract contains 41.26 Acres and is subject to a road right of way easement along the East line thereof, and any other easements or restrictions of record.



DATE OF FIELD WORK: September 25, 2024

SURVEYOR'S CERTIFICATE:

I hereby certify this plat to be a true, correct and complete representation of the property described above as surveyed under my supervision.  
Dated: September 30, 2024

