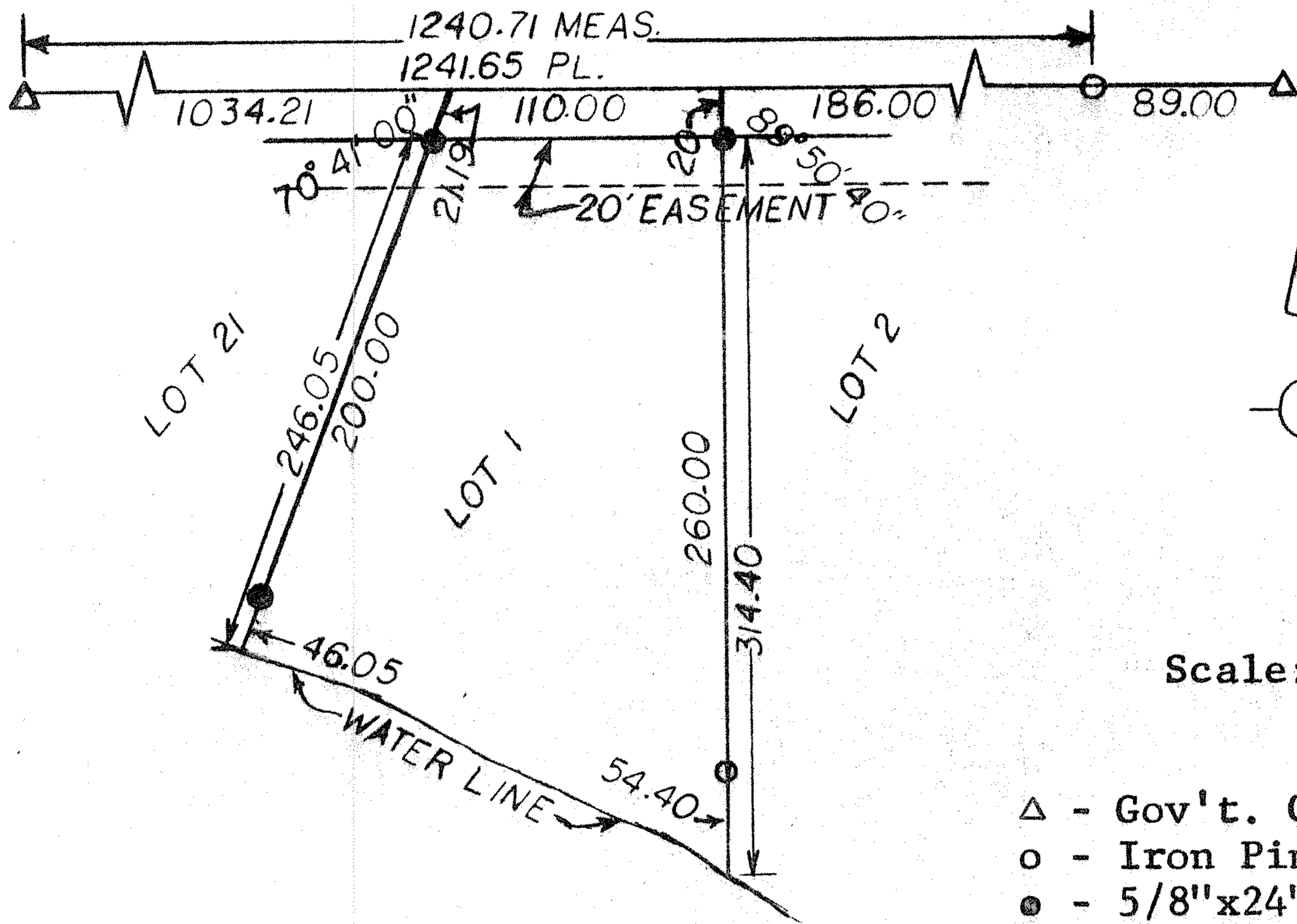


Survey for: Keith Swinehart  
By: Garber Surveying Service, P.A.  
217 E. First Ave., Suite 9  
Hutchinson, Kansas 67501

DESCRIPTION: Lot 1, Country Club Acres, a subdivision in the NE $\frac{1}{4}$  of Section 29, Township 18 South, Range 3 West of the 6th Principle Meridian, in McPherson County, Kansas.



Scale: 1"=100'

- △ - Gov't. Corner Found
- - Iron Pin Found
- - 5/8"x24" Iron Pin set.

I hereby certify this plat to be a true, correct and complete representation of the property described above, as surveyed by me, this 4th day of January, 1980.

*Daniel E. Garber*

