



Garber Surveying Service, P.A.

2908 North Plum St.
Hutchinson, Kansas 67502
Phone 620 665-7032 • FAX 620 663-7401

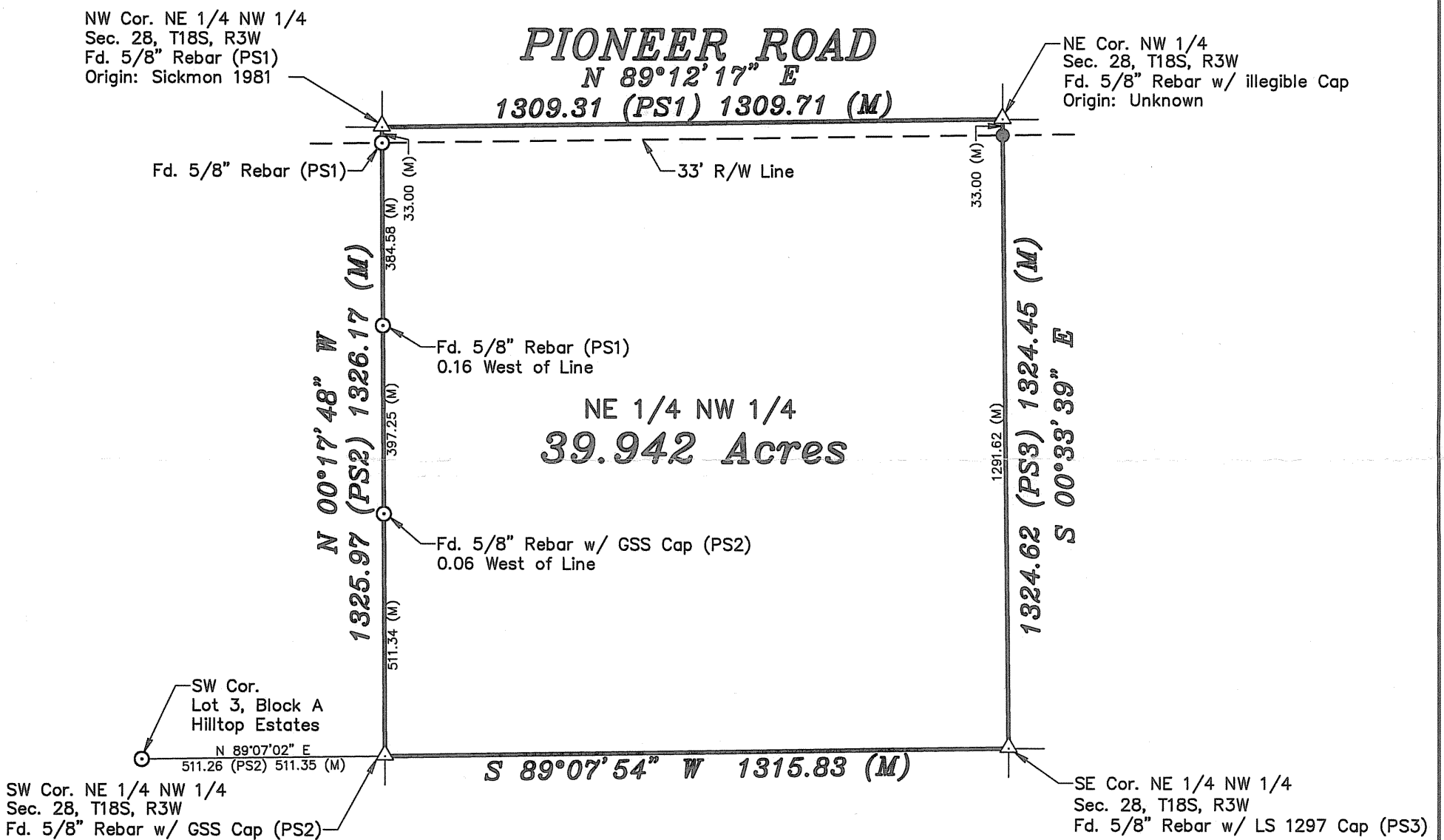
511 North Poplar St.
Newton, Kansas 67114
Phone 316 283-5053 • FAX 316 283-5073

115 East Marlin
McPherson, Kansas 67460
Phone 620 241-4441 • FAX 620 241-4458

Project No. G2012-677

SURVEY FOR: JIM MILLER

DESCRIPTION: The Northeast 1/4 of the Northwest 1/4 of Section 28, Township 18 South, Range 3 West of the 6th Principal Meridian, McPherson County, Kansas.



LEGEND

- △ - Sectional Monument Found
- - Survey Monument Found
- - 5/8" x 24" Iron Rebar Set w/G.S.S. Cap
- (M) - Measured
- (PS1) - Previous Survey, Sickmon Dated 8/28/81
- (PS2) - Previous Survey, GSS Project #G94-1105,
- (PS3) - Previous Survey, LS 1297 Dated 11/16/05



Scale: 1"=300'

BASIS OF BEARING = KANSAS STATE PLANE GRID

DATE OF FIELD WORK: November 15, 2012

SURVEYOR'S CERTIFICATE:

I hereby certify this plat to be a true, correct and complete representation of the property described above as surveyed under my supervision.

Dated: November 26, 2012

Copyright © 2012 Garber Surveying Service, P.A.

