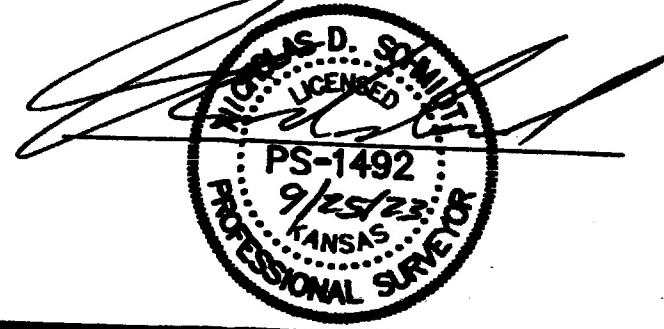


**SURVEYOR'S CERTIFICATE:**  
I hereby certify this plat to be a true, correct and complete representation of the property described hereon, as surveyed under my supervision, this 25th day of September, 2023.



- LEGEND**
- △ - Sectional Monument Found
  - - Section Monument Set (5/8" x 24" Iron Rebar w/G.S.S. Cap)
  - - 5/8" x 24" Iron Rebar Set w/G.S.S. Cap
  - W - Water Well
  - (C) - Calculated
  - (M) - Measured
  - (PS) - Previous Survey Surveyor's Record Book A, Page 384, Duval 7/2/1888
  - (PS) - Previous Survey GSS Project #G2014-403
  - (a.o.) - General Land Office
  - P.O.B. - Point of Beginning

**DESCRIPTION:**  
**TRACT 1**  
A portion of the Northeast Quarter of Section 26, Township 18 South, Range 2 West of the 6th Principal Meridian, McPherson County, Kansas, described as follows by Nicholas D. Schmidt, PS #1492, this 25th day of September, 2023:  
Beginning at the Northeast corner of said Northeast Quarter; thence on a NAD 83 Kansas South Zone bearing of South 00°37'48" East on the East line of said Northeast Quarter a distance of 1325.12 feet to the Southeast corner of the North Half of said Northeast Quarter; thence South 88°27'13" West on the South line of said North Half a distance of 1343.97 feet; thence North 01°44'51" West a distance of 1310.78 feet to the North line of said Northeast Quarter; thence North 87°51'38" East on said North line a distance of 1369.83 feet to the point of beginning.  
Containing 41.05 Acres and subject to a road right of way easement along the East line thereof, and any other easements or restrictions of record.

**TRACT 2**  
The Northeast Quarter of Section 26, Township 18 South, Range 2 West of the 6th Principal Meridian, McPherson County, Kansas EXCEPT a tract described as follows by Nicholas D. Schmidt, PS #1492, this 25th day of September, 2023:  
Beginning at the Northeast corner of said Northeast Quarter; thence on a NAD 83 Kansas South Zone bearing of South 00°37'48" East on the East line of said Northeast Quarter a distance of 1325.12 feet to the Southeast corner of the North Half of said Northeast Quarter; thence South 88°27'13" West on the South line of said North Half a distance of 1343.97 feet; thence North 01°44'51" West a distance of 1310.78 feet to the North line of said Northeast Quarter; thence North 87°51'38" East on said North line a distance of 1369.83 feet to the point of beginning.  
The resulting tract contains 114.20 Acres and subject to a road right of way easement along the East line thereof, and any other easements or restrictions of record.

**Ingress/Egress and Utility Easement**  
A portion of the Northeast Quarter of Section 26, Township 18 South, Range 2 West of the 6th Principal Meridian, McPherson County, Kansas, described as follows by Nicholas D. Schmidt, PS #1492, this 25th day of September, 2023:  
Commencing at the Southeast corner of said Northeast Quarter; thence on a NAD 83 Kansas South Zone bearing of North 00°37'48" West on the East line of said Northeast Quarter a distance of 456.66 feet to the point of beginning; thence South 79°28'20" West a distance of 260.83 feet; thence North 27°36'42" West a distance of 243.28 feet; thence North 02°34'13" West a distance of 238.55 feet; thence North 45°41'42" West a distance of 629.96 feet to the South line of the line a distance of 88.64 feet; thence South 88°27'13" East on said South line a distance of 591.13 feet; thence South 01°34'59" East a distance of 265.64 feet; thence South 81°24'10" East a distance of 147.61 feet; thence South 57°38'13" East a distance of 192.11 feet to the East line of said Northeast Quarter; thence South 00°37'48" East on said East line a distance of 48.68 feet to the point of beginning.

<b>Prepared For:</b> <b>JESSE KOEHN</b>		<b>Description:</b> <b>A PORTION OF THE NE 1/4 SECTION 26, T18S, R2W MCPHERSON COUNTY, KANSAS</b>	
<b>Prepared By:</b> <b>GSS HUTCHINSON</b> 2908 North Plum St. 67502 Ph. 620-645-7832 (Main Office)		<b>BRANCH OFFICES:</b> MANHATTAN Ph. 785-320-4810 MCPHERSON Ph. 620-241-4441 SALINA Ph. 785-404-4382 WICHITA Ph. 316-260-9933	
<b>Drawn By:</b> KLL	<b>Scale:</b> 1"=200'	<b>Date of Field Work:</b> September 13, 2023	<b>Job No:</b>
<b>Checked By:</b> NDS	<b>Date:</b> 09/25/2023	<b>Sheet 1 of 1 Sheet(s)</b>	<b>G2023-738</b>