

DURR ENGINEERING,

SURVEYING, PLANNING, & DEVELOPMENT

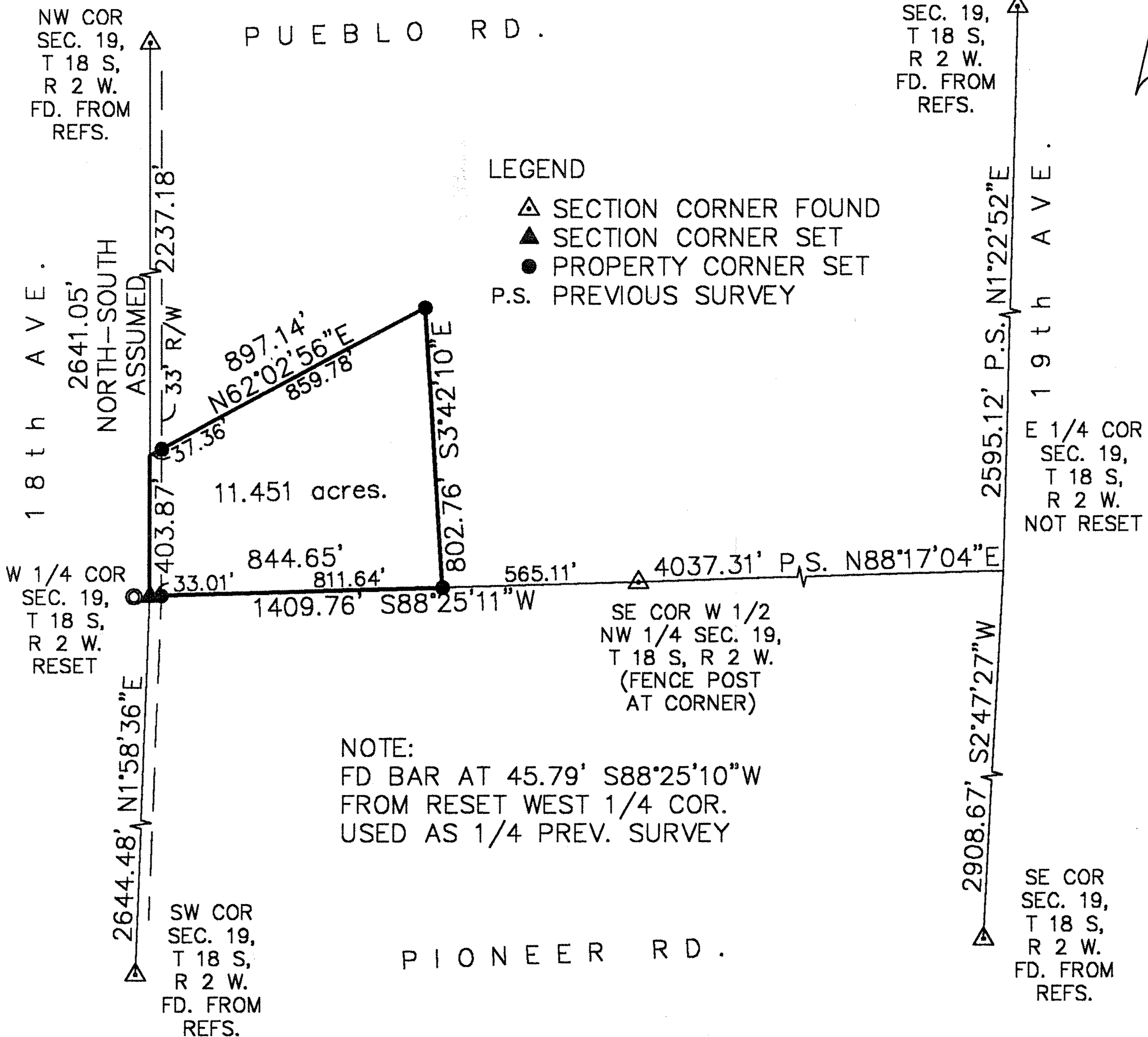
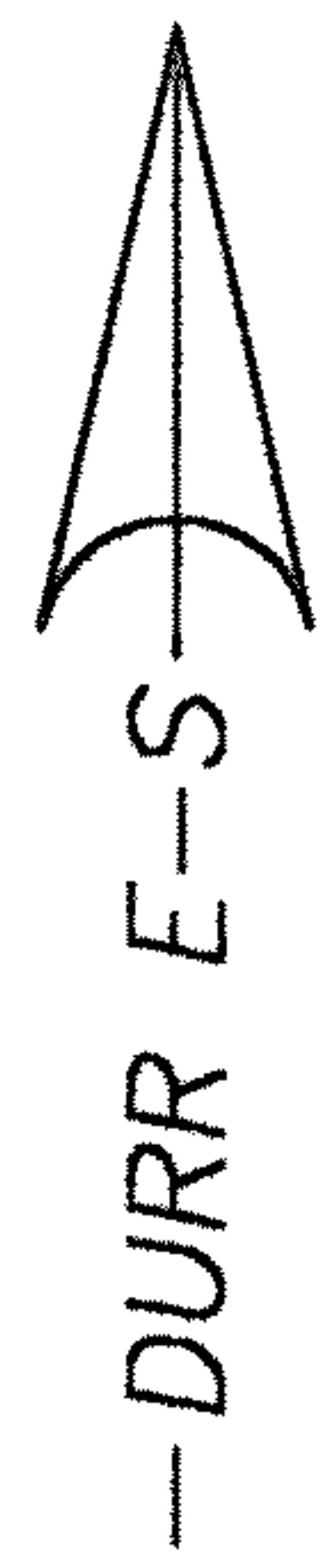
525 HOWARD STREET
HUTCHINSON, KS 67501
PHONE: 620-663-9613

GRAPHIC SCALE
IN FEET



1" = 500'

NORTH



NOTE:
FD BAR AT 45.79' S88°25'10"W
FROM RESET WEST 1/4 COR.
USED AS 1/4 PREV. SURVEY

REVIEW SURVEYOR'S CERTIFICATE
STATE OF KANSAS)

COUNTY OF McPHERSON) SS

REVIEWED IN ACCORDANCE WITH THE
REQUIREMENTS OF K.S.A. 58-2005,

2003.

REGISTERED LAND SURVEYOR

NOTES:

- 1) NO TITLE WORK PROVIDED TO SURVEYOR PRIOR TO SURVEY
- 2) SECTION CORNER TIES TO BE SENT TO COUNTY ENGINEER'S OFFICE AND KANSAS STATE HISTORICAL SOCIETY

I, DUNCAN W. DURR, DO HEREBY CERTIFY THE
HEREON SURVEY TO BE A TRUE AND ACCURATE
REPRESENTATION OF THE CONDITIONS FOUND
ON THE DATE HEREON WRITTEN.

CLIENT: DOYLE DAVIDSON DRAWN: EL CADMEISTER PROJECT: 3071 SHEET: 1 OF: 1

A TRACT IN THE NORTHWEST QUARTER OF SECTION 19, TOWNSHIP 18 SOUTH, RANGE 2 WEST OF THE SIXTH PRINCIPAL MERIDIAN, MORE PARTICULARLY DESCRIBED AS FOLLOWS: BEGINNING AT THE SOUTHWEST CORNER OF SAID NORTHWEST QUARTER; THENCE NORTH, ASSUMED, ALONG THE WEST LINE OF SAID NORTHWEST QUARTER, A DISTANCE OF 403.87 FEET; THENCE N62°02'56"E, A DISTANCE OF 897.14 FEET; THENCE S3°42'10"E, A DISTANCE OF 802.76 FEET TO A POINT ON THE SOUTH LINE OF SAID NORTHWEST QUARTER; THENCE S88°25'11"W, A DISTANCE OF 844.65 FEET TO THE POINT OF BEGINNING; TRACT CONTAINS 11.451 ACRES, EXCEPT THE WEST 33 FEET FOR ROAD RIGHT OF WAY AND ANY OTHER EASEMENTS OF RECORD; ALL IN McPHERSON COUNTY, KANSAS.

STATE: KANSAS COUNTY: McPHERSON SEC: 19 TWP: 18 S R: 2 W DATE: 8/22/2003

DURR ENGINEERING,
525 HOWARD
HUTCHINSON, KS. 67501
620-663-9613

8/25/2003

REPORT OF SURVEY

10 AC TRACT OUT OF NW1/4 19-19-2, McPHERSON COUNTY, KANSAS

McPHERSON CO PUBLIC WORKS HAD REFERENCES ON SE, NE, S1/4, SW, W1/4, & NW CORNERS; ALSO A SURVEY BY DOUG RATHBONE, MACON COMPANY, IN THE SE1/4 24-18-3;

WE FOUND THE W1/4 CORNER VERY QUICKLY, AND NOTIFIED OWNER THAT HE WAS SELLING 45' OF LAND ON WEST SIDE OF ROAD, THE BUYER WAS PRESENT, AND THEY WERE TO NEGOTIATE A NEW DEAL;

ORIGINAL SURVEY NOTES SHOWED 40 & 40 CHAINS ON E SIDE OF SECTION, SO WE BEGAN OUR TRAVERSE ON E SIDE, AND ESTABLISHED THE LOCATION OF THE E 1/4 COR;

TRAVERSED TO THE SW, W1/4, & NW1/4 CORS, THE SET BARS ON DESIRED LOCATION FOR THE TRACT;

WE MISSED THE E-W FENCE ON THE S LINE OF THE 1/4 BY APPROX 25 FEET, AND CALLED BILL HELLER, CO SURVEYOR; HE CALLED BACK AND FOUND A SURVEY IN SURVEY RECORD A PAGES 276-277 BY J.D.CHAMBERLAIN IN 1874 THAT SHOWED BREAKING NW 1/4 INTO 2-N-S 80'S, NE1/4 INTO 4-40'S AND SW1/4 INTO 2 N-S 80'S;

J.D.CHAMBERLAIN MEASURED THE E LINE OF THE NE1/4 AT 19.66 CH (2595.12') WE HAD 2751.69'; WE USED THE 1874 SURVEY FOR THE E LINE NE1/4, AND TRAVERSED TO A FENCE CORNER POST AT THE SE COR OF THE W 1/2 NW 1/4, AND COMPARED CHAINAGE FROM E1/4 COR TO POST TO EXISTING W1/4 COR;

ALL OUTER LINES OF SECTION 19 HAVE LARGE DEFLECTIONS AT 1/4 CORS; RATHBONE OBVIOUSLY SET HIS W1/4 COR FROM SPIT OF TRUE LINE AND DISTANCE; OUR DECISION WAS TO RESET THE W1/4 COR FROM THE FENCE CORNER POST AT THE SE COR OF W 1/2 NW 1/4, THIS PUT THE 1/4 COR IN APPROX CENTER OF THE ROAD;

ATTEMPTED TO CONTACT BOTH MACON AND DOUG RATHBONE WITH NO LUCK.

