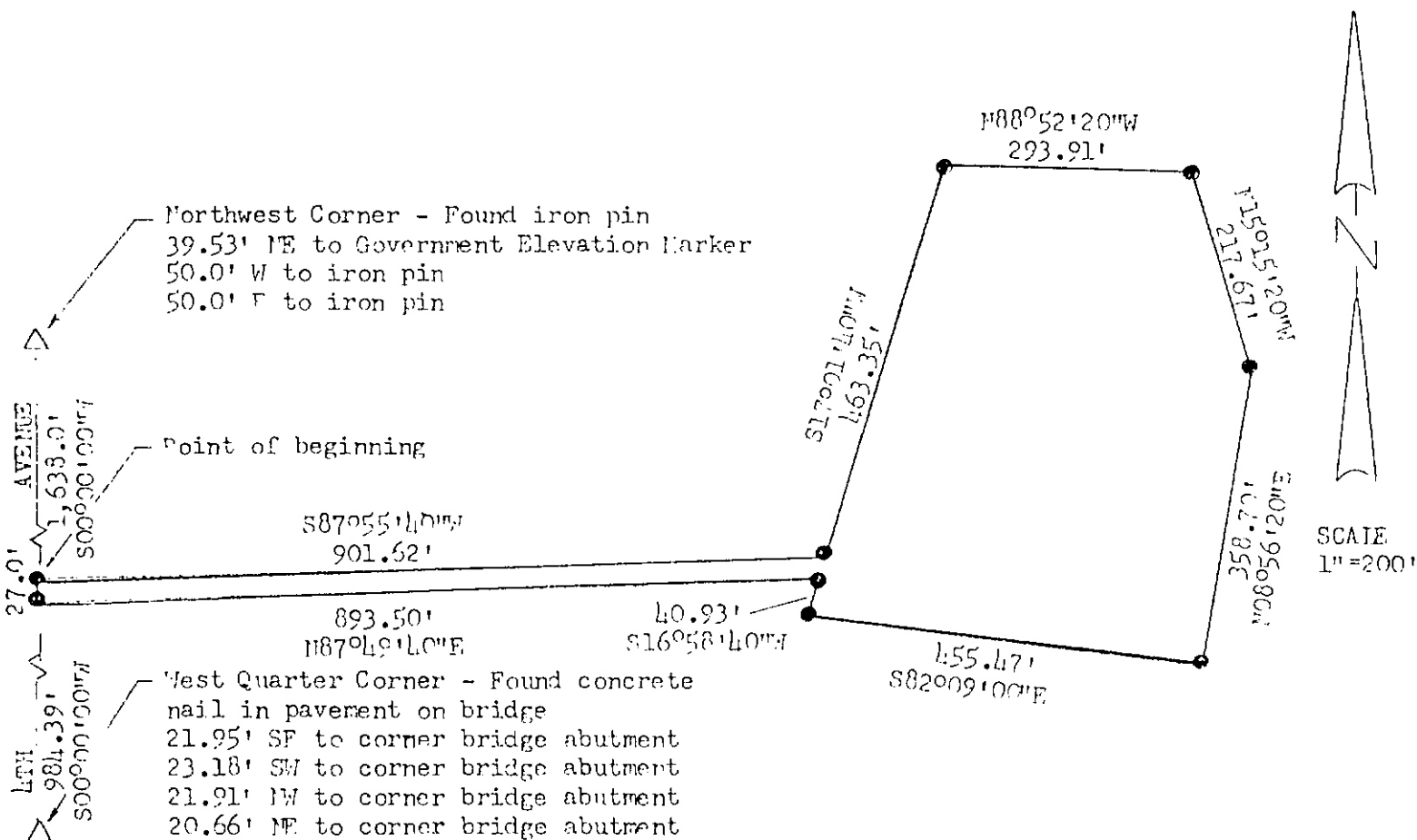


State of Kansas, McPherson Co., SS: 1801
 This instrument was filed for record
 on the 20 day of March A.D., 2002 X
 at 8:05 o'clock A.M., and duly recorded
 in book 71-315 on page 275
Donald H. Maul
 Register of Deeds

SURVEYOR'S CERTIFICATE



ADDRESS: 2768 LTH Avenue

DESCRIPTION:

- A tract of land located in the Northwest Quarter (NW¼) of Section Fourteen (14), Township 17 South, Range 5 West of the 6th Principal Meridian in McPherson County, Kansas, more particularly described as follows: Beginning on the West line of said Northwest Quarter (NW¼) 1,638.0 feet South of the Northwest Corner, thence continuing South along the West line on an assumed bearing of S00°00'00"W a distance of 27.0 feet; thence N87°49'40"E a distance of 893.50 feet; thence S16°58'40"W a distance of 40.93 feet; thence S82°09'00"E a distance of 455.47 feet; thence N08°56'20"E a distance of 358.70 feet; thence N15°15'20"W a distance of 217.67 feet; thence N88°52'20"W a distance of 293.91 feet; thence S17°01'40"W a distance of 463.35 feet; thence S87°55'40"W a distance of 901.62 feet to the point of beginning. Said tract of land contains 5.55 acres more or less subject to easements and restrictions of record.

I hereby certify that this drawing of a survey performed under my direction on the 15th day of March, 2002, to be true and correct to the best of my knowledge and belief.

LEGEND:

- Corners found - Δ
- Property corners set - \bullet
- ($\frac{1}{2}$ " rebar w/ Kriegbaum 160 cap)

Bernie Kriegbaum
 Bernie Kriegbaum
 437 Fairdale Road
 Salina, Kansas
 Telephone: 785-827-7882

