

P.O.B. 1
NW Cor. NW 1/4
Sec. 6, T17S, R1W
Ft. 2" Aluminum Saline County Surveyor Cap
Origin: KSHS References By LS 1201, 5/10/2012

S 89°48'28" W 2501.86 (M) 2486.88 (GLO)

P.O.B. 2
NE Cor. NW 1/4
Sec. 6, T17S, R1W
(See Note 5)

S 89°37'59" W 2639.78 (M) 2640.00 (GLO)
N 89°37'59" E 2314.78 (C)

NE Cor. NE 1/4
Sec. 6, T17S, R1W
Ft. 1/2" Rebar
Origin: KSHS References By LS 1202, 11/27/2013

N 00°54'14" W 2664.02 (M) 2640.00 (GLO)

Tract 1
179.18 Acres

Tract 2
127.64 Acres

30.00 (M)
Witness Corner
SW Cor. NE 1/4
Sec. 6, T17S, R1W
Calculated Location
Corner Falls in Swamp Area
(See Note 3)
SW Cor. SW 1/4
Sec. 6, T17S, R1W
(See Note 4)
S 00°38'54" E 2665.86 (M) 2640.00 (GLO)

S 89°19'16" W 2425.53 (M) 2482.92 (GLO)

SE Cor. NW 1/4
Sec. 6, T17S, R1W

N 89°47'40" E 5086.02 (M)

N 00°11'53" E 2654.62 (M)
SE Cor. SW 1/4
Sec. 6, T17S, R1W
(See Note 6)

S 89°40'32" W 2653.15 (M) 2640.00 (GLO)

SE Cor. NE 1/4
Sec. 6, T17S, R1W
Ft. 5/8" Rebar
Origin: KSHS References
By LS 1202, 5/27/2012

S 00°17'28" E 2648.05 (M) 2640.00 (GLO)

S 00°17'28" W 2670.77 (M) 2659.80 (GLO)

33' R/W Line

N 89°43'05" E
325.00 (C)(R)
33.00 (C)
282.00 (M)
783.74 (M)
33.01 (C)
325.00 (C)(R)

DESCRIPTION:

Tract 1

The Northwest Quarter and a portion of the Northeast Quarter of Section 6, Township 17 South, Range 1 West of the 6th Principal Meridian, McPherson County, Kansas, described as follows by Nicholas D. Schmidt, PS #1492, this 20th day of August, 2024:

Beginning at the Northwest corner of said Northwest Quarter; thence on a NAD 83 Kansas South Zone bearing of North 89°48'28" East on the North line of said Northwest Quarter a distance of 2501.86 feet to the Northwest corner of said Northwest Quarter; thence South 00°11'53" West on the West line of said Northwest Quarter a distance of 887.11 feet; thence North 88°33'32" East a distance of 197.47 feet; thence South 59°25'09" East a distance of 23.78 feet; thence South 27°00'48" East a distance of 26.74 feet; thence South 00°33'49" East a distance of 162.16 feet; thence South 46°11'09" East a distance of 56.50 feet; thence North 86°51'38" East a distance of 202.97 feet; thence North 62°48'41" East a distance of 102.09 feet; thence North 73°40'44" East a distance of 226.53 feet; thence South 50°34'09" East a distance of 17.23 feet; thence South 10°39'28" West a distance of 573.72 feet; thence South 03°56'41" East a distance of 1090.41 feet to the South line of said Northeast Quarter; thence South 89°47'40" West on the South line of said Northeast Quarter a distance of 771.65 feet to the Southeast corner of said Northwest Quarter; thence South 89°47'40" West on the South line of said Northwest Quarter a distance of 2450.63 feet to the Southwest corner of said Northwest Quarter; thence North 00°54'14" West on the West line of said Northwest Quarter a distance of 2664.02 feet to the point of beginning.

The above described tract contains 179.18 Acres and is subject to a road right of way easement along the North line thereof, and any other easements or restrictions of record.

Tract 2

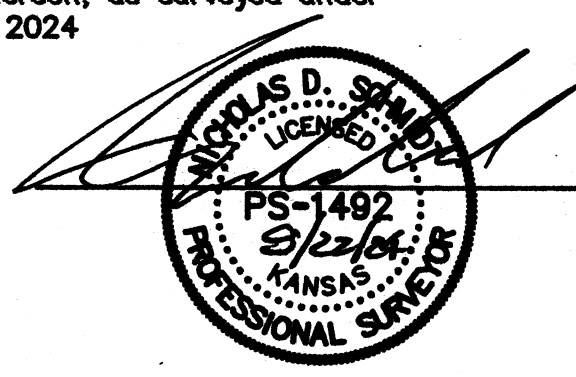
A portion of the Northeast Quarter of Section 6, Township 17 South, Range 1 West of the 6th Principal Meridian, McPherson County, Kansas, described as follows by Nicholas D. Schmidt, PS #1492, this 20th day of August, 2024:

Beginning at the Northwest corner of said Northeast Quarter; thence on a NAD 83 Kansas South Zone bearing of thence North 89°37'16" East on the North line of said Northeast Quarter a distance of 2314.79 feet to a point 325.00 feet (Record) West of the Northeast corner of said Northeast Quarter; thence South 00°17'28" West parallel with the East line of said Northeast Quarter a distance of 816.75 feet (Record); thence North 89°43'05" East parallel with said North line a distance of 325.00 feet (Record) to said East line; thence South 00°17'28" West on said East line a distance of 1854.02 feet to the Southeast corner of said Northeast Quarter; thence South 89°47'40" West on the South line of said Northeast Quarter a distance of 1863.75 feet; thence North 03°56'41" West a distance of 1090.41 feet; thence North 10°39'28" East a distance of 573.72 feet; thence North 50°34'09" West a distance of 17.23 feet; thence South 73°40'44" West a distance of 226.53 feet; thence South 62°48'41" West a distance of 102.09 feet; thence South 86°51'38" West a distance of 202.97 feet; thence North 46°11'09" West a distance of 56.50 feet; thence North 00°33'49" West a distance of 162.16 feet; thence North 27°00'48" West a distance of 26.74 feet; thence North 59°25'09" West a distance of 23.78 feet; thence South 88°33'32" West a distance of 197.47 feet to the West line of said Northeast Quarter; thence North 00°11'53" East on said West line a distance of 887.11 feet to the point of beginning.

The above described tract contains 127.64 Acres and is subject to road right of way easements along the North and East lines thereof, and any other easements or restrictions of record.

SURVEYOR'S CERTIFICATE:

I hereby certify this plat to be a true, correct and complete representation of the property described hereon, as surveyed under my supervision, this 22th day of August, 2024



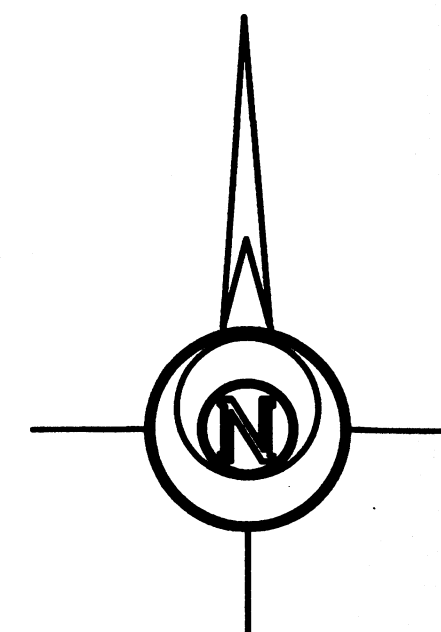
SURVEYOR'S NOTES:

- Survey was made as per client request and no title work has been provided to the surveyor; therefore, the number and extent of easements and/or rights-of-way of record affecting said property has not been verified by this Survey.
- All measurements are in US Survey Feet.
- No reference reports or previous surveys of record for this corner since set by GLO. Searched and probed for GLO stone monument around apparent corner but nothing found. Reset by physical evidence at the intersection of the West fence line running North and the South fence line running East. The West fence line appears to continue in line with single fence line running North at W 1/4 corner. South fence line running East is in line with apparent centerline of Wheatridge road at dead end to the East.
- No reference reports or previous surveys of record for this corner since set by GLO. Searched and probed for GLO stone monument around apparent corner but nothing found. Reset by physical evidence at the intersection of the fence lines running North and West. Calculated corner falls in swamp; therefore, witness monument was set 30.00' East on section line.
- No reference reports or previous surveys of record for this corner since set by GLO. Searched and probed for GLO stone monument around apparent corner but nothing found. Reset by physical evidence of fence lines running North and South and in centerline of Wheatridge road per road record.
- No reference reports or previous surveys of record for this corner since set by GLO. Searched and probed for GLO stone monument around apparent corner but nothing found. Reset by physical evidence of fence lines running North and South and in centerline of Wheatridge road per road record.

LINE TABLE		
LINE NUMBER	BEARING	DISTANCE
L1	N 88°33'32" E	197.47 (M)
L2	S 59°25'09" E	23.78 (M)
L3	S 27°00'48" E	26.74 (M)
L4	S 00°33'49" E	162.16 (M)
L5	S 46°11'09" E	56.50 (M)
L6	N 86°51'38" E	202.97 (M)
L7	N 62°48'41" E	102.09 (M)
L8	N 50°34'09" W	17.23 (M)

LEGEND

- △ - Sectional Monument Found
- ▲ - Section Monument Set (5/8" x 24" Iron Rebar w/G.S.S. Cap)
- - 5/8" x 24" Iron Rebar Set w/GSS Cap
- (C) - Calculated
- (M) - Measured
- (R) - Record measurement
- (GLO) - General Land Office
- P.O.B. - Point of Beginning



-200 0 200 400 600

BASIS OF BEARING = NAD 83 KANSAS SOUTH ZONE

Prepared For:	JASON BAIRD			Description:	A PORTION OF THE N 1/2 SECTION 6, T17S, R1W MCPHERSON COUNTY, KANSAS		
Prepared By:	Garber Surveying Service, P.A.						
HUTCHINSON 2908 North Plum St. 67502 Ph. 620-665-7832 (Main Office)		BRANCH OFFICES:		MANHATTAN Ph. 785-329-4810 MCPHERSON Ph. 620-341-4441 SALINA Ph. 785-404-4382 WICHITA Ph. 316-263-5853			
Drawn By:	KJC	Scale:	1"=200'	Date of Field Work:	AUGUST 8TH, 2024		
Checked By:	NDS	Date:	08/22/2024	Sheet	1 of 1 Sheet(s)		
				Job No:	G2024-630		