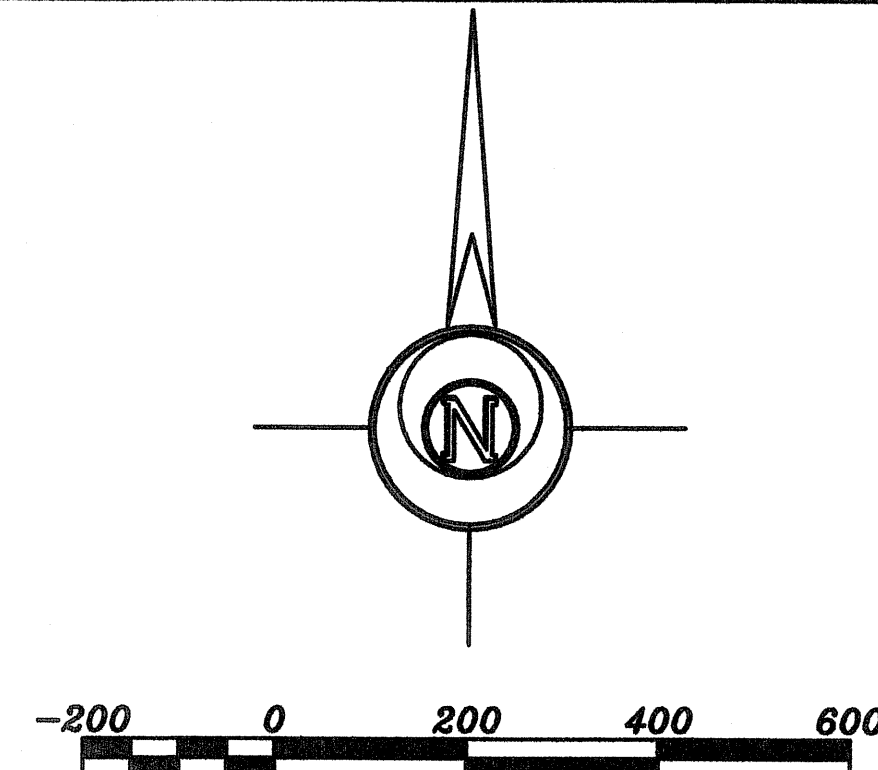
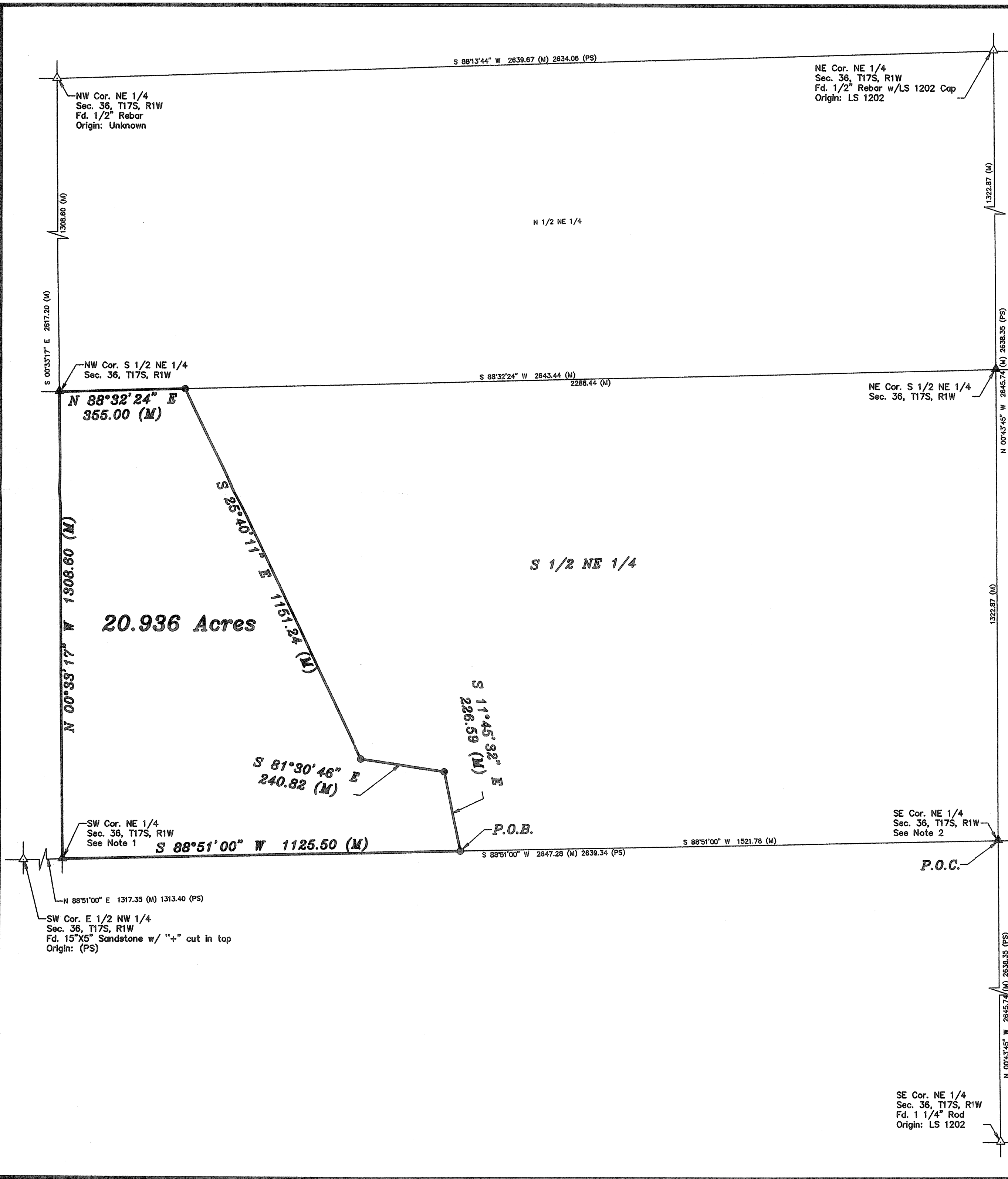


Saved 3/26/2014 11:02:56 AM by CSWANEY
Plot Date & Time Wednesday, March 26, 2014 11:03:06 AM Dwg Path U:\DDO\CSSFILES\2014\20140170 C30\dwg\20140170 Auto S Ground



BASIS OF BEARING = KANSAS STATE PLANE ZONE 1502

LEGEND

- △ - Sectional Monument Found
- ▲ - Section Monument Set (5/8" x 24" Iron Rebar w/G.S.S. Cap)
- - 5/8" x 24" Iron Rebar Set w/G.S.S. Cap
- (C) - Calculated
- (M) - Measured
- P.O.B. - Point of Beginning
- P.O.C. - Point of Commencement
- (PS) - Previous Survey Permanent Survey #38 Book A, Page 150 (9-4-1900)

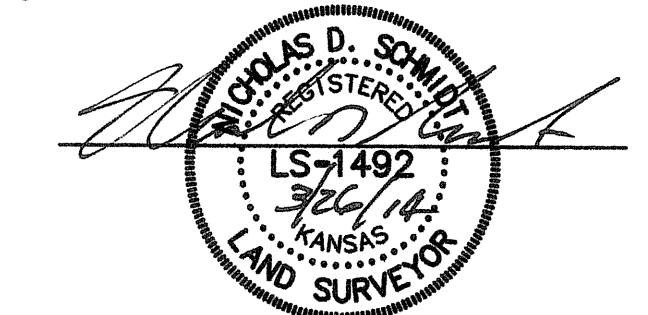
DESCRIPTION:
A portion of the South Half of the Northeast Quarter of Section 36, Township 17 South, Range 1 West of the 6th Principal Meridian, McPherson County, Kansas described as follows:

Commencing at the Southeast corner of the Northeast Quarter of Section 36, Township 17 South, Range 1 West of the 6th Principal Meridian; thence on a Kansas State Plane Zone 1502 bearing South 88°51'00" West along the South line of said Northeast Quarter 1521.78 feet to the point of beginning; thence continuing South 88°51'00" West along said South line 1125.50 feet to the Southwest corner of said Northeast Quarter; thence North 00°33'17" West along the West line of said Northeast Quarter 1308.60 feet to the Northwest corner of the South Half of said Northeast Quarter; thence North 88°32'24" East along the North line of said South Half 355.00 feet; thence South 25°40'11" East 1151.24 feet; thence South 81°30'46" East 240.82 feet; thence South 11°45'32" East 226.59 feet to the point of beginning, containing **20.936 Acres**, subject to any easements or restrictions of record.

SURVEYOR'S NOTES:

- Searched and excavated for stone set in (PS) but did not find. Found 3 sandstone fragments at surface 0.5' East of North/South fence line. Calculated a proration from found stone at Southwest corner of the East Half of the Northwest Quarter to the calculated/set location at the Southeast corner of the Northeast Quarter. The prorated position falls in North/South fence line and 0.8 feet North of line of fence East and 2.55' North of leaning fence corner. Set monument at prorated position next to sandstone fragments. The (PS) notes reveal this corner as well as the found 1/16th corner West were set by running a line West from the E 1/4 corner to the 1/16th corner without tying into the W 1/4 corner.
- Searched and excavated for stone set in (PS) but did not find. Set monument by single proportionate measurement. Monument falls in centerline of the North/South travel way and in line with fence line West.

SURVEYOR'S CERTIFICATE:
I hereby certify this plat to be a true, correct and complete representation of the property described hereon, as surveyed under my supervision, this 26th day of March, 2014.



Prepared For: RUNDSTROM LAUER, INC		Description: A PORTION OF THE S 1/2, NE 1/4 SECTION 36, T17S, R1W MCPHERSON COUNTY, KANSAS	
Prepared By: CSS		Garber Surveying Service, P.A.	
Drawn By: CSS		Scale: 1"=200'	Date of Field Work: March 17, 2014
Checked By: NDS		Date: 3/26/2014	Sheet 1 of 1 Sheet(s)
		Job No: G2014-170	

NEWTON (Branch Office) 511 North Poplar St. 67114 Ph. 316-283-5053 Fax 316-283-5073

HUTCHINSON (Main Office) 2908 North Plum St. 67502 Ph. 620-665-7032 Fax 620-663-7401

McPHERSON (Branch Office) 115 East Marlin 67460 Ph. 620-241-4441 Fax 620-241-4458