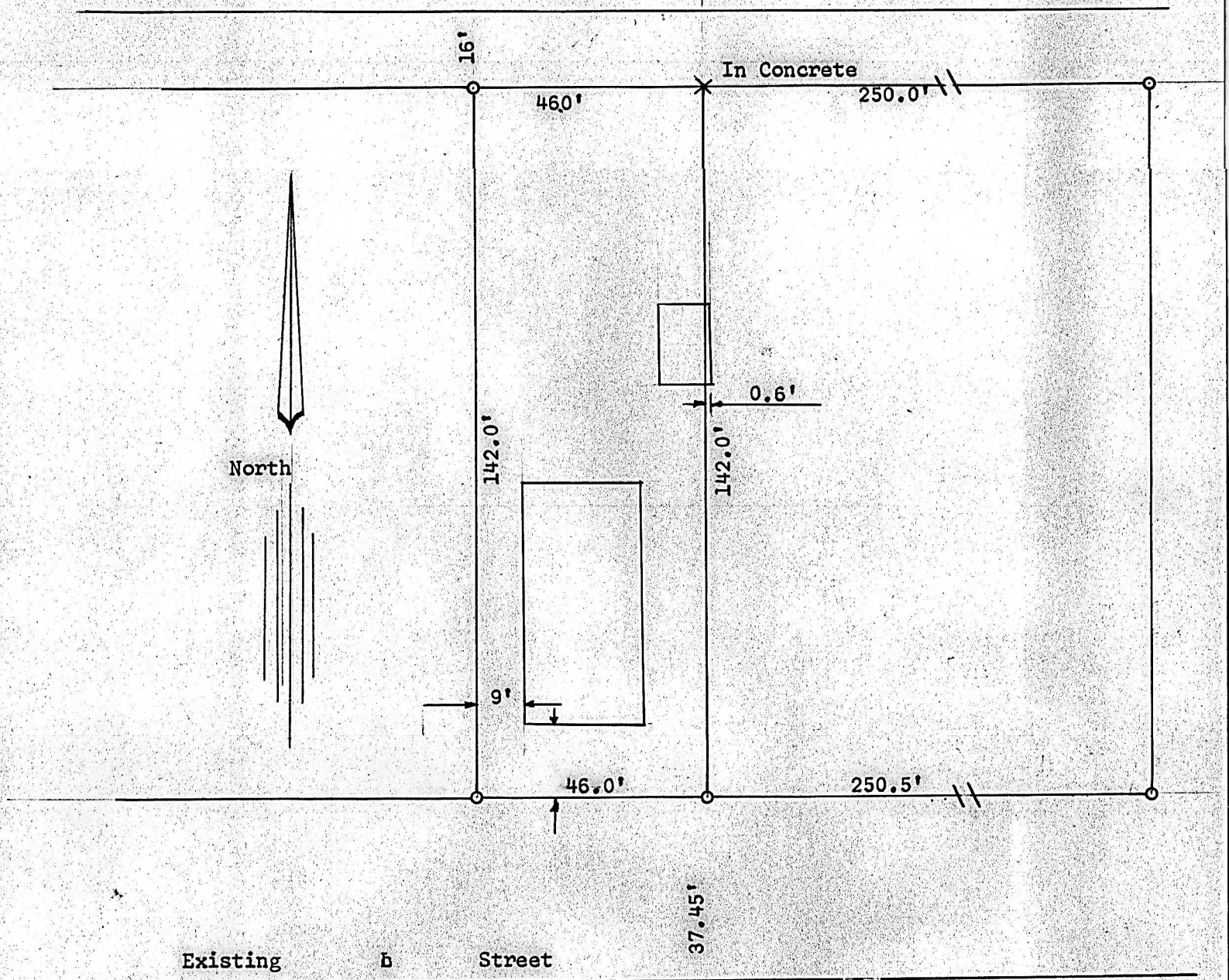


A SURVEY OF THE EAST 46 FEET OF
LOT 15, BLOCK 2, OF WRIGHT AND
OLSON ADD., MC PHERSON, KANSAS



- Pins re-established this survey
- Pins set previous survey

State of Kansas)
County of McPherson) SS

I, Francis R. Rankin, County Engineer of McPherson County, Kansas, do hereby certify that under my supervision a survey was made at the East 46 feet of Lot 15, Block 2, of Wright and Olson Addition to the City of McPherson, Kansas and the above plat is a true exhibit of said survey as far as it known to me.

Signed this 25th day of May 1964.

Francis R. Rankin
Francis R. Rankin
County Engineer
McPherson, Kansas

