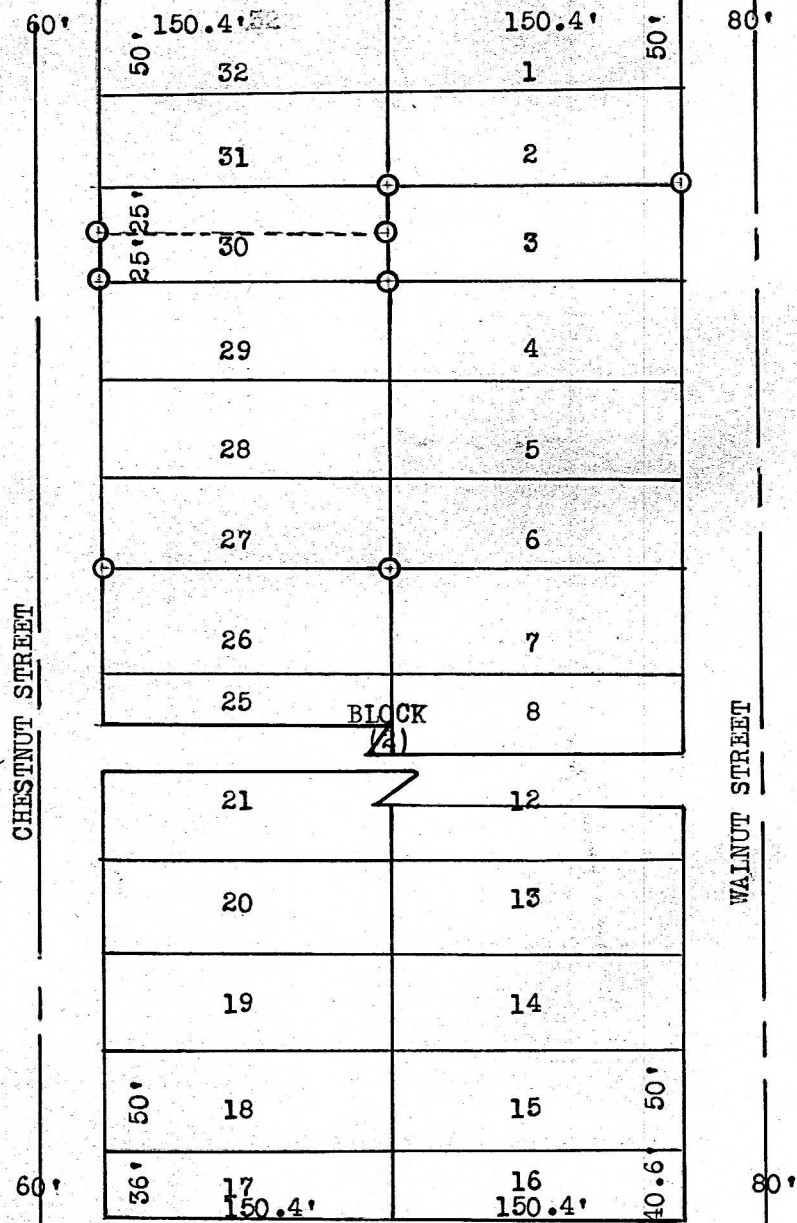


April 3, 1950

CENTERLINE AVENUE "F"



-QUARTER SECTION LINE-

State of Kansas, County of McPherson, ss.

I, Francis D. Wagner, County Engineer of McPherson County, Kansas, do hereby certify that I did on the 3rd day of April, 1950, survey and stake the South half of Lot 30, Block 2, Walnut Addition to the City of McPherson, and that the accompanying plat is a true exhibit of said survey.

*Francis D. Wagner*  
FRANCIS D. WAGNER  
County Engineer

