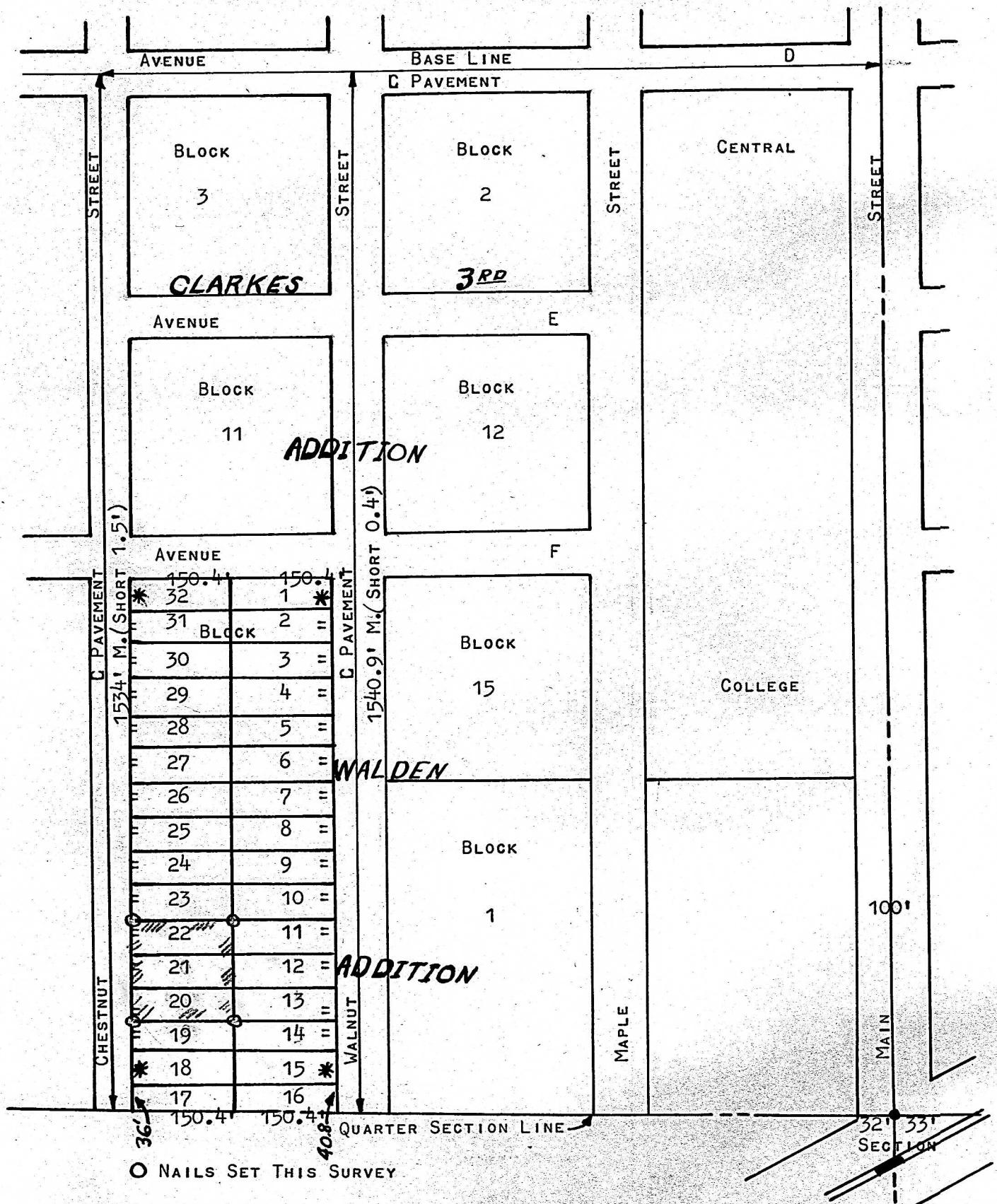


A SURVEY OF LOTS 20-21 & 22
BLOCK 2 - WALDENS ADDITION
TO THE CITY OF MCPHERSON



STATE OF KANSAS) SS
COUNTY OF MCPHERSON)

I, FRANCIS D. WAGNER, COUNTY ENGINEER OF MCPHERSON COUNTY, KANSAS DO
HEREBY CERTIFY THAT I DID CAUSE TO BE DONE ON THE 13TH DAY OF OCTOBER,
1958 A SURVEY OF LOTS 20, 21 & 22 BLOCK TWO OF WALDEN ADDITION TO THE
CITY OF MCPHERSON, AND THE ACCOMPANYING PLAT IS A TRUE EXHIBIT OF SAID
SURVEY.

Francis D. Wagner

FRANCIS D. WAGNER
COUNTY ENGINEER
MCPHERSON, KANSAS

21 OCTOBER, 1958

* NOTE: THE PRORATION OF SHORTAGE WAS TAKEN IN BLOCK TWO WALDENS ADDITION
MAKING THE 50' LOTS ON CHESTNUT STREET 49.9' AND THE 50' LOTS ON WALNUT
STREET 49.975'.