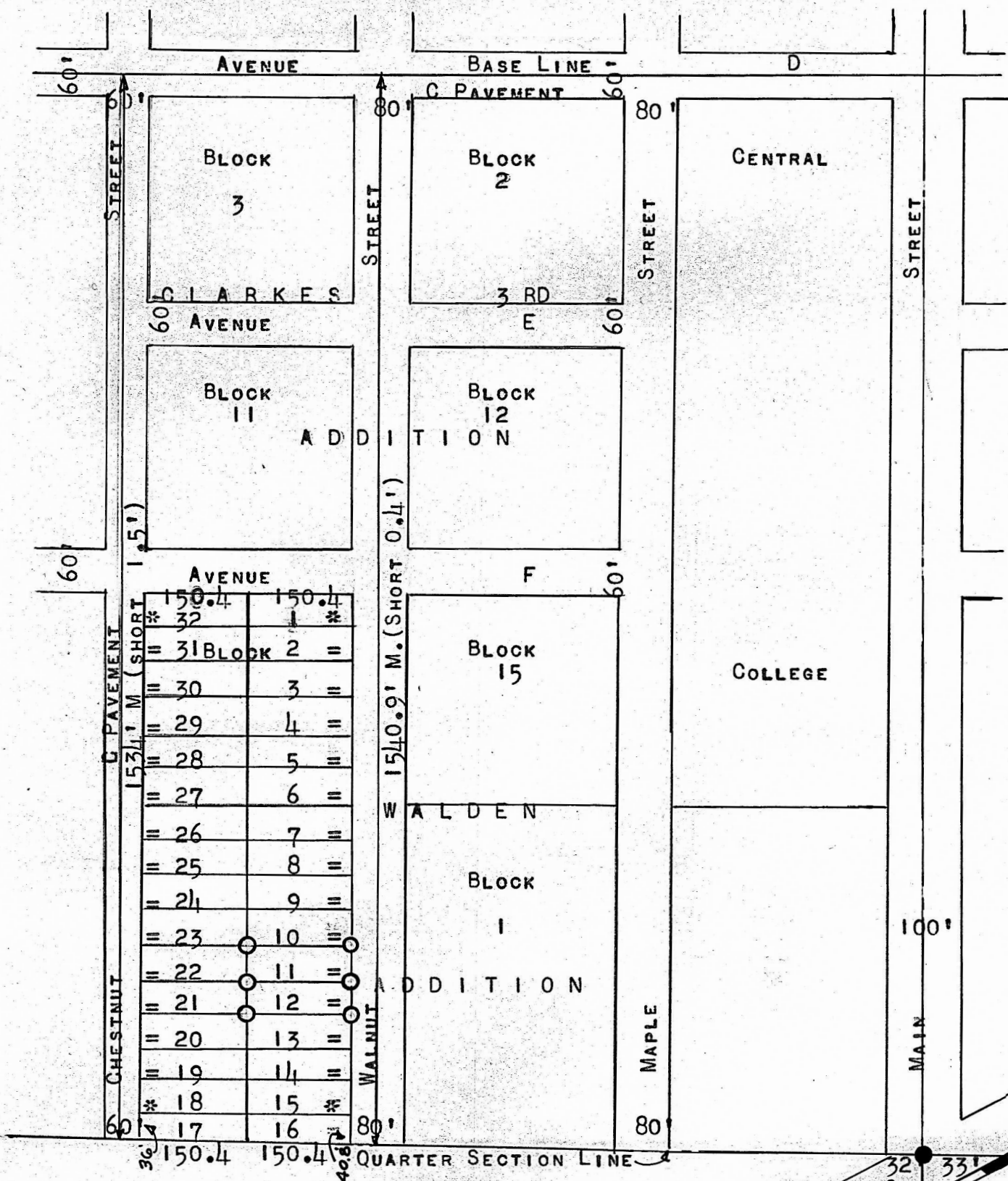


A SURVEY OF LOTS 11 & 12
BLOCK 2 - WALDENS ADDITION
TO THE CITY OF MCPHERSON



- 1" PINS SET THIS SURVEY
- PINS PREVIOUS SURVEY

STATE OF KANSAS)
COUNTY OF MCPHERSON) SS

I, FRANCIS D. WAGNER, COUNTY ENGINEER OF MCPHERSON COUNTY, KANSAS, DO HEREBY CERTIFY THAT I DID CAUSE TO BE DONE ON THE 24TH DAY OF MARCH, 1959, A SURVEY OF LOTS 11 & 12, BLOCK TWO OF WALDEN ADDITION TO THE CITY OF MCPHERSON, AND THE ACCOMPANYING PLAT IS A TRUE EXHIBIT OF SAID SURVEY.

Francis D. Wagner

24 MARCH, 1959

FRANCIS D. WAGNER
COUNTY ENGINEER
MCPHERSON, KANSAS

MICROFILM

*NOTE: THE PRORATION OF SHORTAGE WAS TAKEN IN BLOCK TWO WALDENS ADDITION MAKING THE 50' LOTS ON CHESTNUT STREET 49.9' AND THE 50' LOTS ON WALNUT STREET 49.975'.