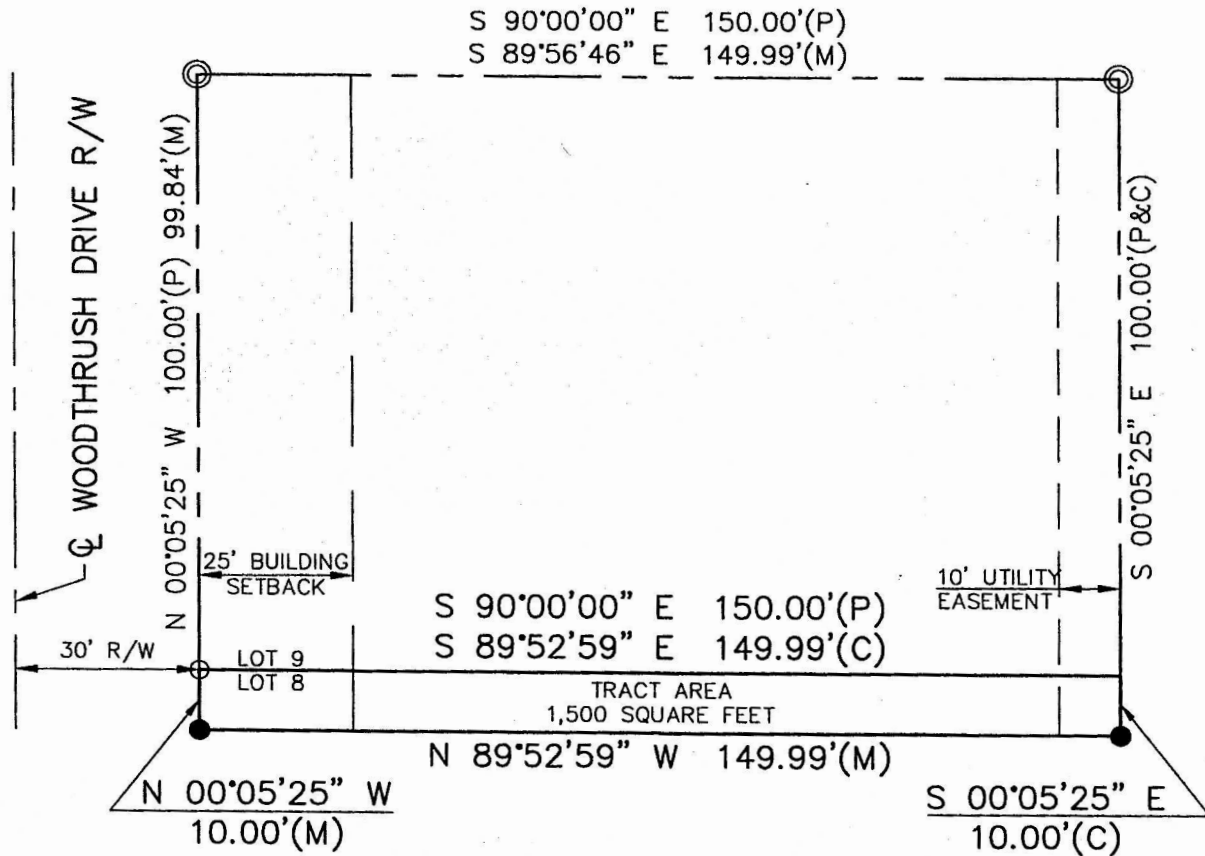


# CERTIFICATE OF SURVEY

N. 10' OF LOT 8, BLOCK "B", TURKEY CREEK FIFTH ADDITION  
MCPHERSON, MCPHERSON COUNTY, KANSAS



## LEGEND

- ⊙ 5/8" BAR W/ "GARBER SURVEY HUTCHINSON KS" CAP FOUND
- 5/8" REBAR FOUND, ORIGIN UNKNOWN
- 1/2"x24" REBAR W/ "KVE CLS-20" CAP SET
- (P) PLATTED BEARING & DISTANCE
- (M) MEASURED BEARING & DISTANCE
- (C) CALCULATED MEASUREMENT



SCALE: 1" = 30'



742 DUVALL AVENUE  
SALINA, KANSAS 67401  
PH. (785) 823-3400 | FAX (785) 823-3411  
sa@kveng.com | www.kveng.com

**KAW VALLEY ENGINEERING**

PREPARED FOR:  
JC BUILDERS - CRAIG PIERCY  
P.O. BOX 3173  
SALINA, KANSAS 67402-3173

KAW VALLEY ENGINEERING, INC., IS AUTHORIZED TO  
OFFER SURVEYING SERVICES BY KANSAS STATE  
CERTIFICATE OF AUTHORIZATION NO. LS-20.  
EXPIRES 12/31/16

PROJECT NO.	E15S1301
DRAWN BY	LRR
CHECKED BY	WCD
CFN	1301CS
SHEET	2 OF 2

THIS DRAWING SHALL NOT BE UTILIZED BY ANY PERSON, FIRM, OR CORPORATION IN WHOLE OR IN PART WITHOUT THE SPECIFIC PERMISSION OF KAW VALLEY ENGINEERING, INC.

Z:\CIVIL 3D PROJECTS 2014\E15\_1301\SURVEY\1301CS.dwg, 6/24/2015 2:11:26 PM, reiter