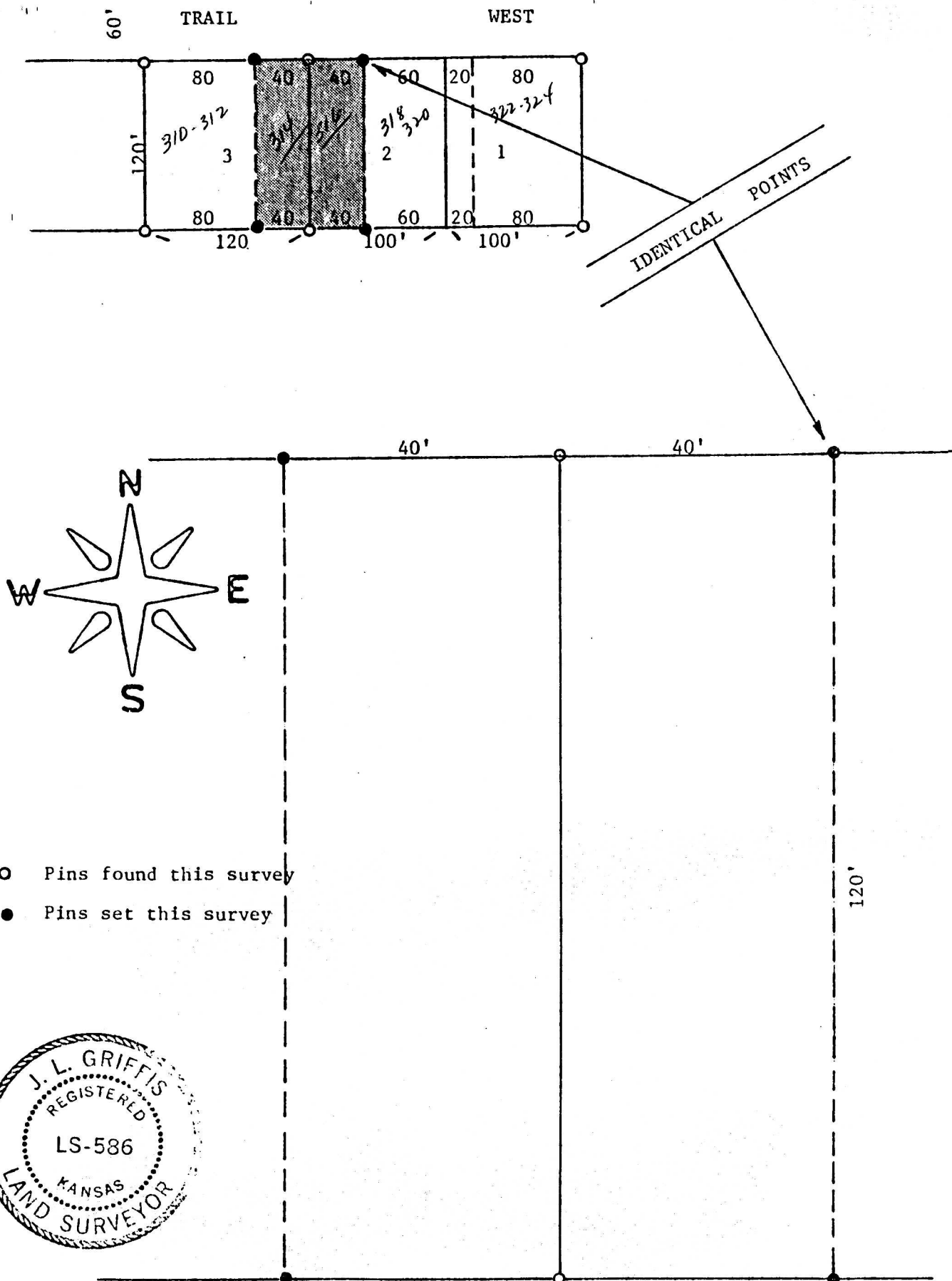


E. 40' Lot 3 and  
W. 40' Lot 2 Block 1  
Trail North Sub-Division  
McPherson, Kansas



STATE OF KANSAS )  
COUNTY OF McPHERSON) S.S.

I, J. L. Griffis, Registered Land Surveyor in the State of Kansas, do hereby certify that under my supervision a survey was made of the East 40 feet of Lot 3 and the West 40 feet of Lot 2, Block 1, Trail North Sub-Division to the City of McPherson, Kansas, and the above plat is a true exhibit of said survey as far as it is known to me.

Survey requested by Larry Shotts.

Signed this 3rd day May 1983.

J. L. Griffis  
*J. L. Griffis*  
McPherson, Kansas