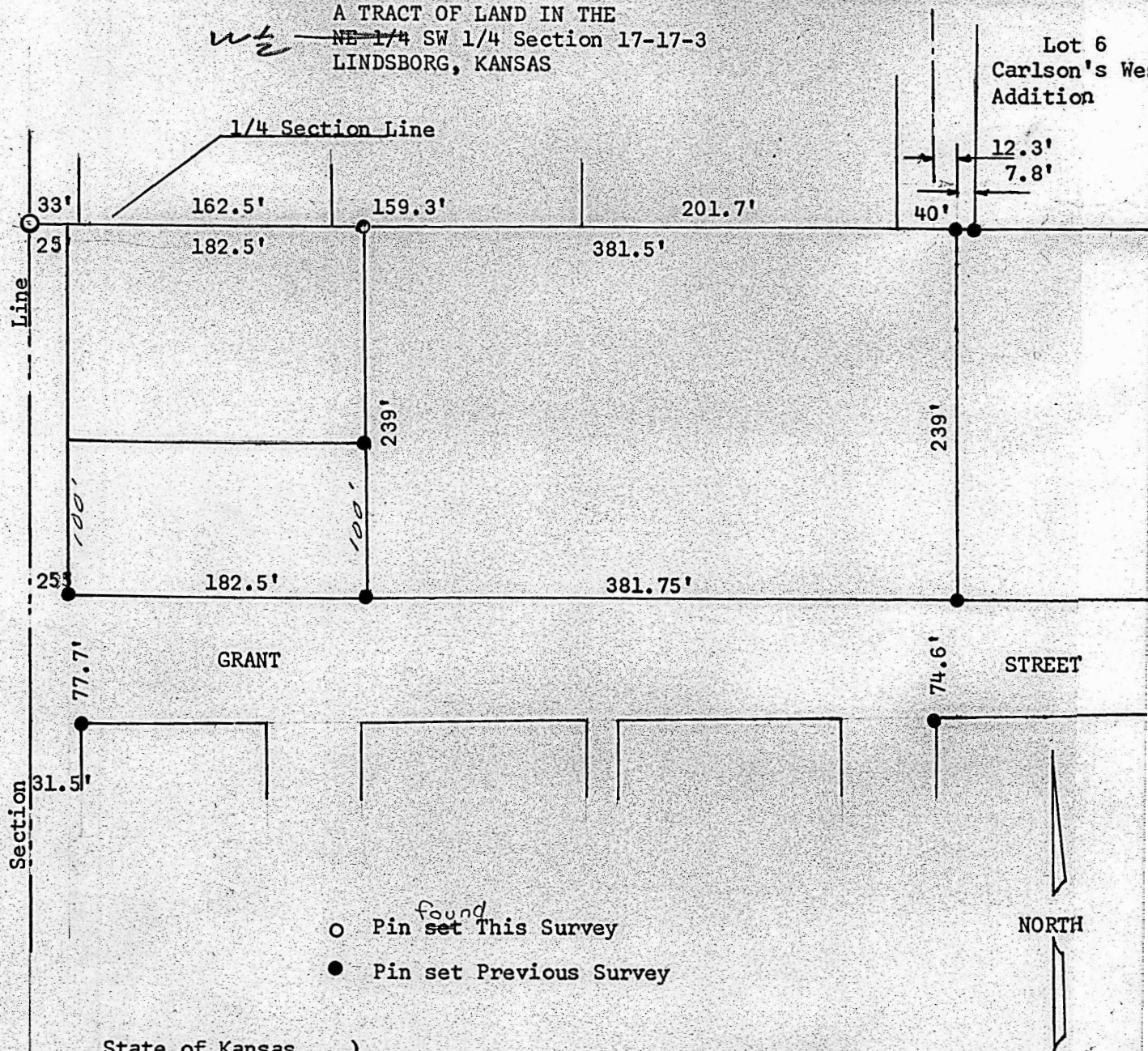


NE 1/4
A TRACT OF LAND IN THE
~~NE 1/4~~ SW 1/4 Section 17-17-3
LINDSBORG, KANSAS

Lot 6
Carlson's We
Addition



I, F. R. Rankin, County Engineer of McPherson County, Kansas, do hereby certify that under my supervision a survey was made of a tract of land in the ~~NE 1/4~~ *NE 1/4*, SW 1/4 Section 17, T17S, R3W of the 6th P.M.

Commencing at the NW corner of the SW 1/4 of said section; thence East on the 1/4 Section Line 207.5 feet to a point of beginning; thence East on said 1/4 Section Line 381.5 feet; thence South 239 feet; thence West 381.75 feet; thence North 239 feet to the point of beginning and the land herein described contains 2.12 acres and the above plat is a true exhibit of said survey as far as it is known to me.
Survey called for by Chet Abercrombie, 215 N. 2nd, Lindsborg, Kansas

Signed this 24 day of September 1968

F. R. Rankin
F. R. Rankin
County Engineer
McPherson, Kansas



MICROFILM