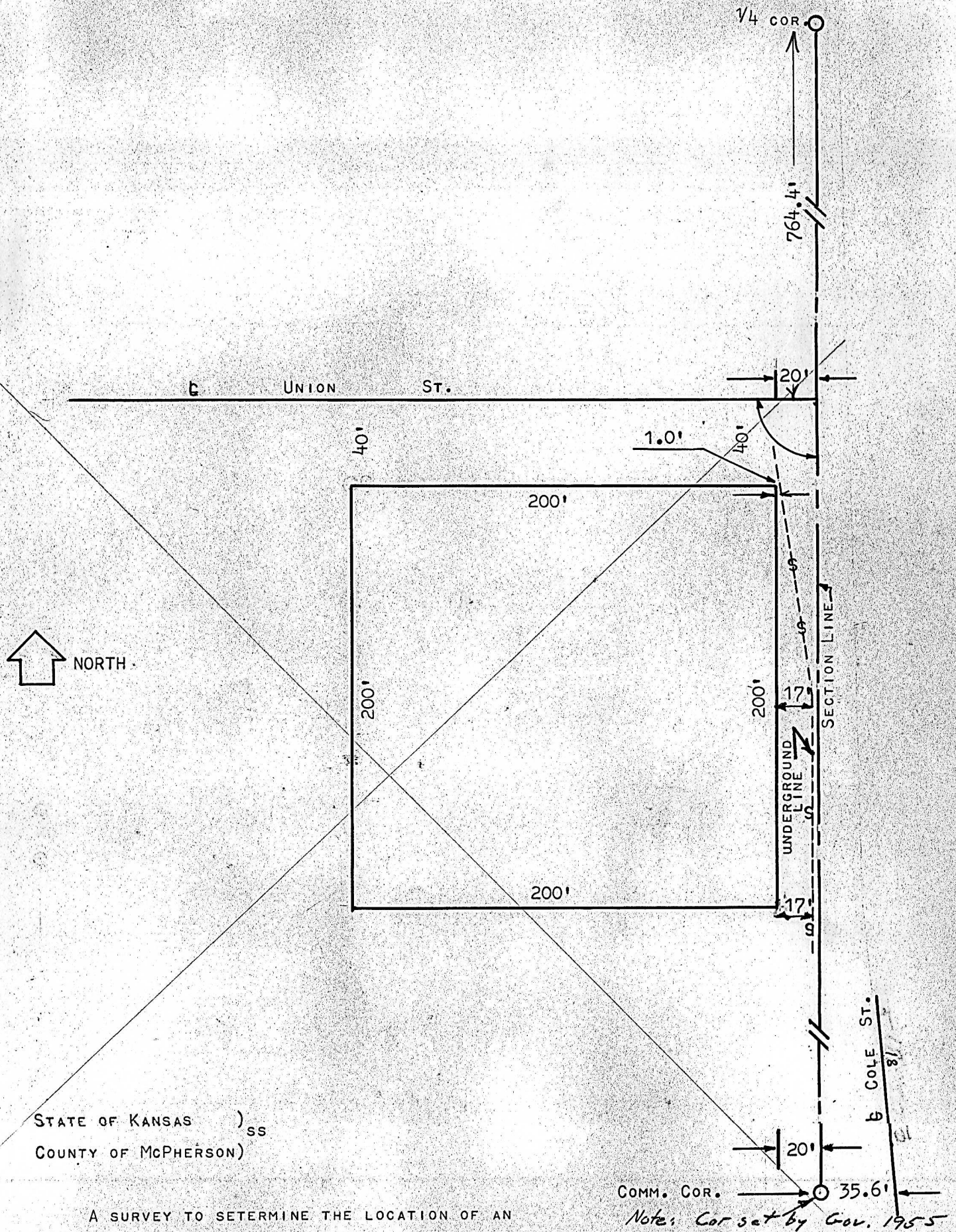


A SURVEY TO DETERMINE THE LOCATION OF AN UNDERGROUND LINE
LINDSBORG, KS.



STATE OF KANSAS)
COUNTY OF McPHERSON) ss

A SURVEY TO DETERMINE THE LOCATION OF AN
UNDERGROUND LINE IN THE CITY OF LINDSBORG, KS.

SURVEY CALLED FOR BY

SIGNED THIS 12 DAY OF AUGUST, 1964.

FRANCIS RANKIN
COUNTY ENGINEER
McPHERSON, KANSAS

