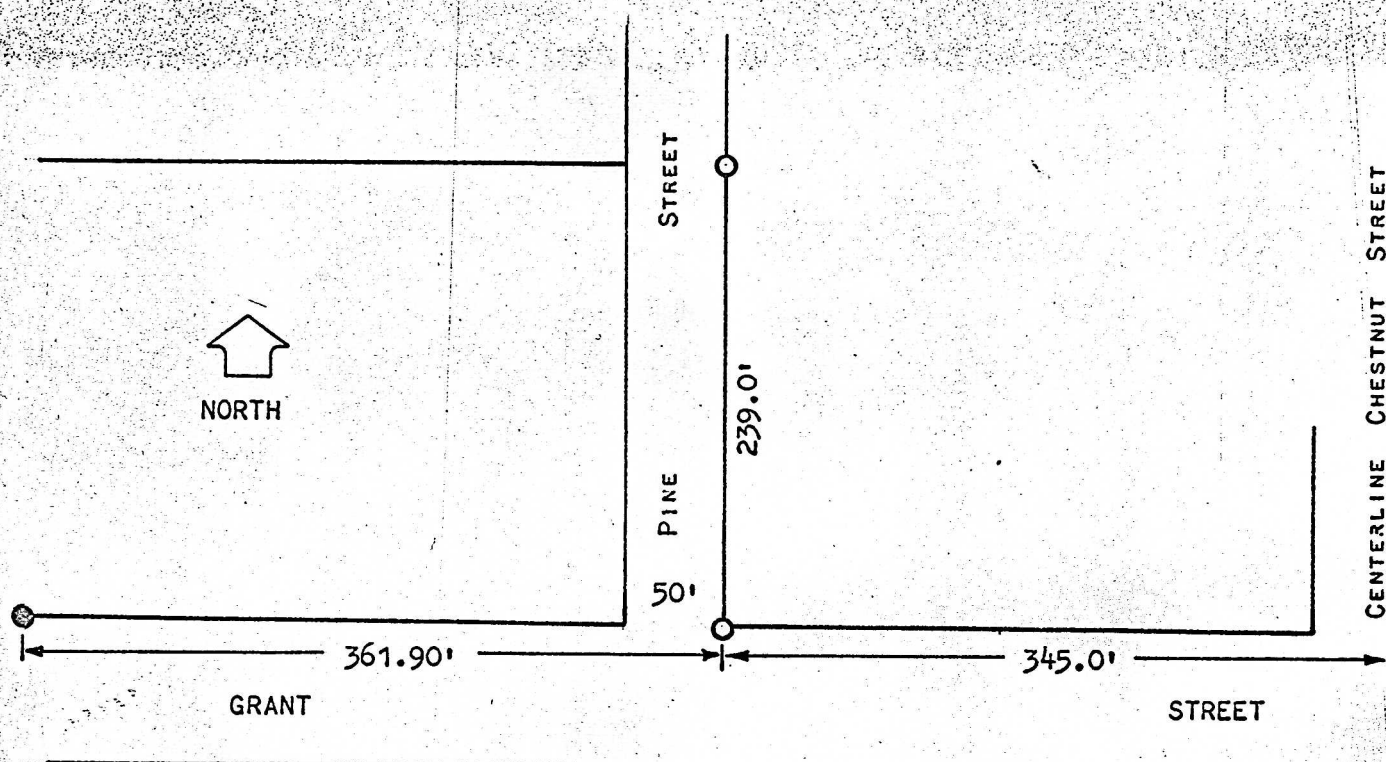


A SURVEY OF THE EAST LINE OF PINE STREET
FROM THE NORTH LINE OF GRANT STREET, 239 FEET NORTH
LINDSBORG, KANSAS



● PINS FOUND THIS SURVEY

○ PINS SET THIS SURVEY

STATE OF KANSAS)
COUNTY OF MCPHERSON)_{SS}

I, FRANCIS RANKIN, COUNTY ENGINEER OF MCPHERSON CO., KANSAS DO HEREBY CERTIFY THAT UNDER MY SUPERVISION A SURVEY WAS MADE OF THE EAST LINE OF PINE STREET FROM THE NORTH LINE OF GRANT STREET, 239.0 FEET NORTH IN THE CITY OF LINDSBORG, KANSAS, AND THAT THE ABOVE PLAT IS A TRUE EXHIBIT OF SAID SURVEY AS FAR AS IT IS KNOWN TO ME.

SURVEY CALLED FOR BY

SIGNED ON THIS 6 DAY OF MARCH, 1970.

F. R. Rankin
F. R. RANKIN

COUNTY ENGINEER
MCPHERSON CO., KANSAS

