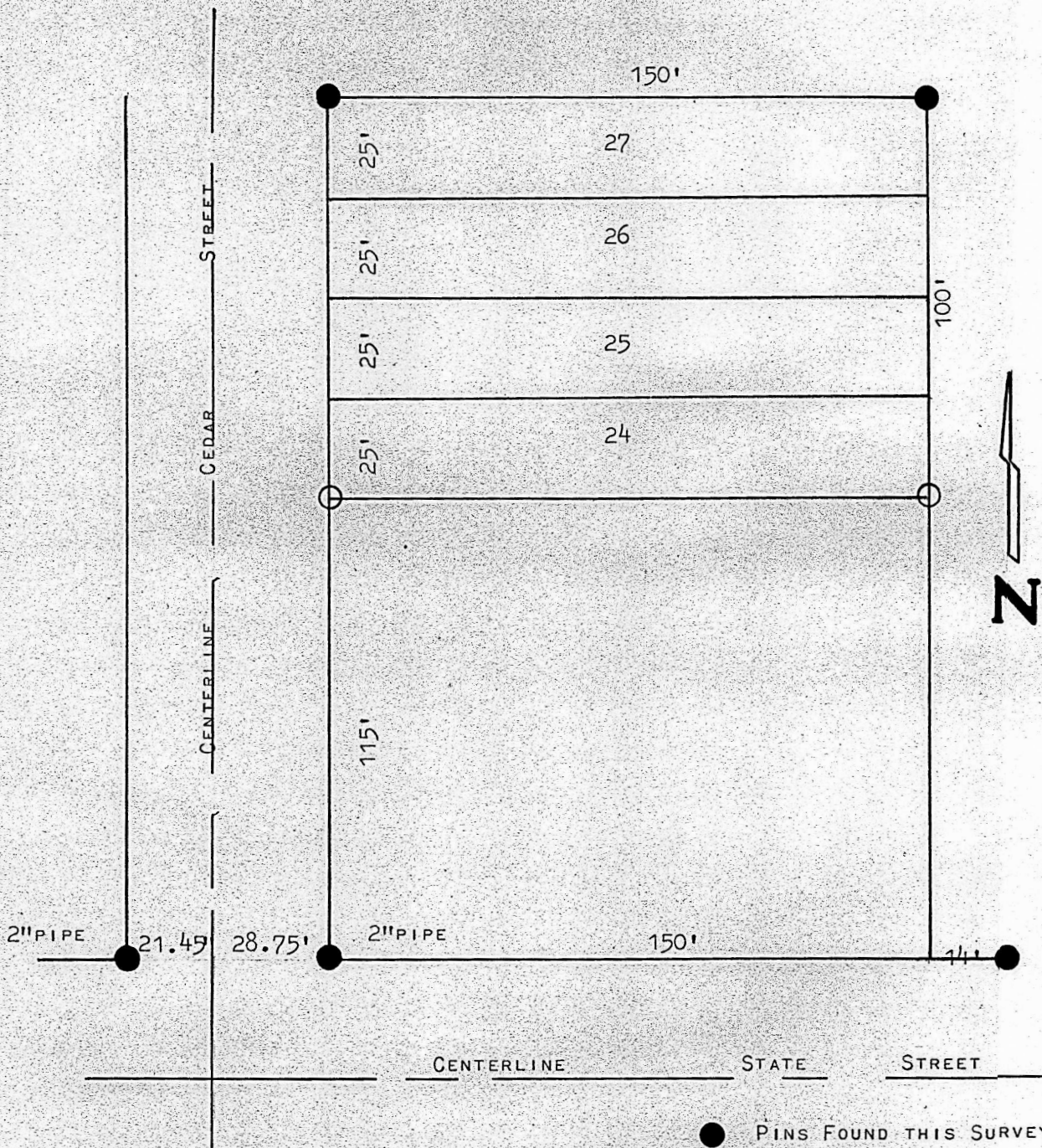


A SURVEY OF LOTS 24, 25, 26, & 27
TINGLOF'S ADDITION
CITY OF LINDSBORG, KANSAS



STATE OF KANSAS)
COUNTY OF MCPHERSON) ss

I, F.R. RANKIN, COUNTY ENGINEER OF MCPHERSON, KANSAS, DO HEREBY CERTIFY THAT UNDER MY SUPERVISION A SURVEY WAS MADE OF LOTS 24, 25, 26, & 27 OF TINGLOF ADDITION TO THE CITY OF LINDSBORG, KANSAS, AND THAT THE ABOVE PLAT IS A TRUE EXHIBIT OF SAID SURVEY AS FAR AS IT IS KNOWN TO ME.

SURVEY CALLED FOR BY JEROME PALMQUIST.

SIGNED THIS 30 DAY OF AUGUST 1967

F.R. Rankin
F.R. RANKIN
COUNTY ENGINEER
MCPHERSON, KANSAS

799

PROFESSIONAL ENGINEER