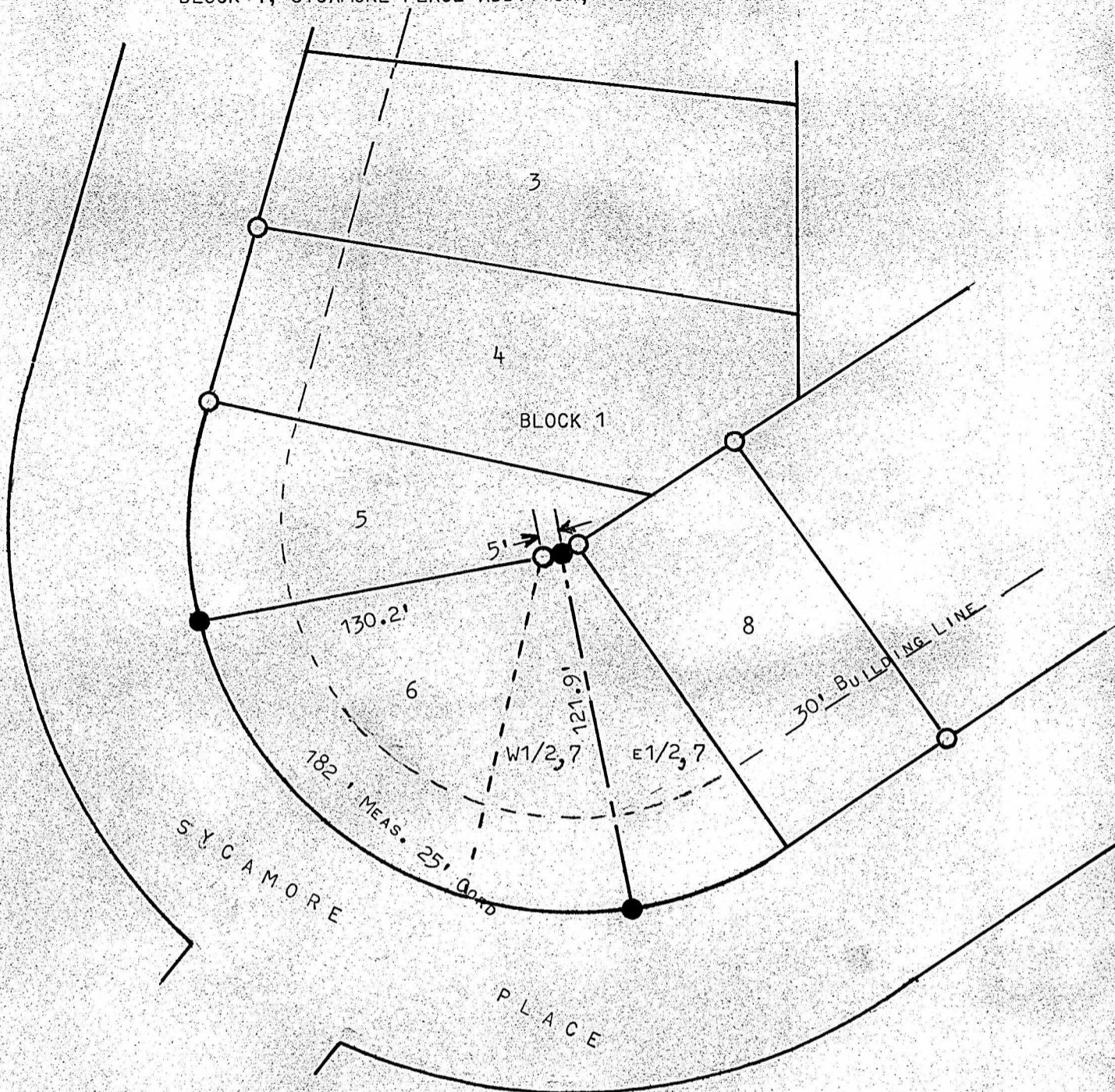


A SURVEY OF LOTS 6 AND WEST HALF OF LOT 7
BLOCK 1, SYCAMORE PLACE ADDITION, MCPHERSON



- PINS FOUND THIS SURVEY
- PINS SET THIS SURVEY

STATE OF KANSAS)
COUNTY OF MCPHERSON) SS

I, FRANCIS RANKIN, PROFESSIONAL ENGINEER OF THE STATE OF KANSAS DO
HEREBY CERTIFY THAT UNDER MY SUPERVISION A SURVEY WAS MADE OF LOT 6,
AND THE WEST HALF OF LOT 7, SYCAMORE PLACE, TO THE CITY OF MCPHERSON,
KANSAS, AND THAT THE ACCOMPANYING PLAT IS A TRUE EXHIBIT OF SAID
SURVEY AS FAR AS IT IS KNOWN TO ME.

SURVEY CALLED FOR BY DON WALSTROM

SIGNED THIS 29 DAY OF JULY, 1969

Francis Rankin
FRANCIS RANKIN
PROFESSIONAL ENGINEER
MCPHERSON, KANSAS

